

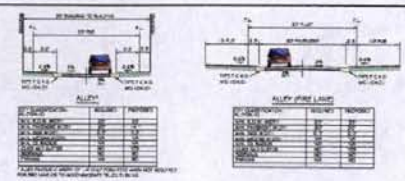
PRELIMINARY NOT FOR CONSTRUCTION



NOTE: PUBLIC UTILITY ELEMENTS (PUE) INDICATED IN SECTIONS ARE OPTIONAL AND MAY BE ADDED AND SUBTRACTED AS NECESSARY.



SECTION "A" (PUBLIC)
SPINE ROAD - DUAL LANE DUAL



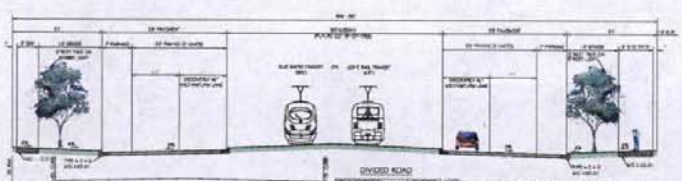
SECTION "B" (PRIVATE)
PRIVATE ALLEY



SECTION "C" (PUBLIC)
TYPICAL RESIDENTIAL STREET



SECTION "D" (PUBLIC)
TYPICAL RESIDENTIAL STREET



SECTION "E" (PUBLIC)
DISCOVERY DRIVE (EXTENDED)
FIELDS ROAD - BETWEEN WASH HASTONMAN BOULEVARD AND DISCOVERY DRIVE (EXTENDED)



SECTION "F" (PRIVATE)
SPINE ROAD - BETWEEN RIG BOULEVARD AND DISCOVERY DRIVE



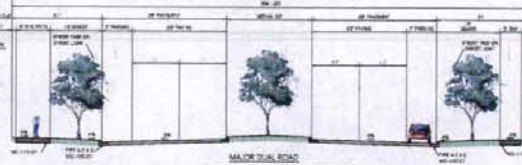
SECTION "G" (PUBLIC)
FIELDS ROAD - BETWEEN RIG BOULEVARD AND SAN JOE HIGHWAY



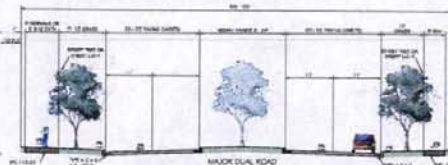
SECTION "H" (PUBLIC)
SPINE ROAD - TYPICAL RESIDENTIAL STREET



SECTION "I" (PUBLIC)
SPINE ROAD - TYPICAL RESIDENTIAL STREET



SECTION "J" (PUBLIC)
FIELDS ROAD - BETWEEN DISCOVERY DRIVE (EXTENDED) AND RIG BOULEVARD



SECTION "K" (PUBLIC)
FIELDS ROAD - BETWEEN RIG BOULEVARD AND SAN JOE HIGHWAY

SECTION	DATE	REVISION	DATE	REVISION	DATE
SECTION "A"	01/08				
SECTION "B"	01/08				
SECTION "C"	01/08				
SECTION "D"	01/08				
SECTION "E"	01/08				
SECTION "F"	01/08				
SECTION "G"	01/08				
SECTION "H"	01/08				
SECTION "I"	01/08				
SECTION "J"	01/08				
SECTION "K"	01/08				

Applicant/Owner:
Crown Village Farm, LLC
c/o KBRW
8800 Tower Crest Drive
Suite 1200
Vienna, VA 22180

ANNEXATION X-182
ROAD CODE WAIVER EXHIBIT
(CROSS SECTIONS)



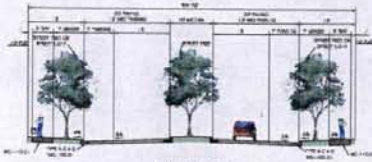
Boulder Consulting, Inc.
2000 W. 10th Street
Suite 100
Boulder, CO 80502
303.440.1234
www.boulderconsulting.com

THE CROWN PROPERTY
Vision for a New Community
9TH ELECTION DISTRICT
MONTGOMERY COUNTY, MARYLAND

SCALE	AS SHOWN
DATE	01/08
DATE	JAN. 2008
HEET NO.	2 OF 2

PENGAD 800-631-8998
 #118 1 of 2
 X-182

PRELIMINARY NOT FOR CONSTRUCTION



ITEM	DESCRIPTION	WIDTH
1	PLANTING STRIP	10'-0"
2	PLANTING STRIP	10'-0"
3	PLANTING STRIP	10'-0"
4	PLANTING STRIP	10'-0"
5	PLANTING STRIP	10'-0"
6	PLANTING STRIP	10'-0"
7	PLANTING STRIP	10'-0"
8	PLANTING STRIP	10'-0"
9	PLANTING STRIP	10'-0"
10	PLANTING STRIP	10'-0"
11	PLANTING STRIP	10'-0"
12	PLANTING STRIP	10'-0"
13	PLANTING STRIP	10'-0"
14	PLANTING STRIP	10'-0"
15	PLANTING STRIP	10'-0"
16	PLANTING STRIP	10'-0"
17	PLANTING STRIP	10'-0"
18	PLANTING STRIP	10'-0"
19	PLANTING STRIP	10'-0"
20	PLANTING STRIP	10'-0"
21	PLANTING STRIP	10'-0"
22	PLANTING STRIP	10'-0"
23	PLANTING STRIP	10'-0"
24	PLANTING STRIP	10'-0"
25	PLANTING STRIP	10'-0"
26	PLANTING STRIP	10'-0"
27	PLANTING STRIP	10'-0"
28	PLANTING STRIP	10'-0"
29	PLANTING STRIP	10'-0"
30	PLANTING STRIP	10'-0"
31	PLANTING STRIP	10'-0"
32	PLANTING STRIP	10'-0"
33	PLANTING STRIP	10'-0"
34	PLANTING STRIP	10'-0"
35	PLANTING STRIP	10'-0"
36	PLANTING STRIP	10'-0"
37	PLANTING STRIP	10'-0"
38	PLANTING STRIP	10'-0"
39	PLANTING STRIP	10'-0"
40	PLANTING STRIP	10'-0"
41	PLANTING STRIP	10'-0"
42	PLANTING STRIP	10'-0"
43	PLANTING STRIP	10'-0"
44	PLANTING STRIP	10'-0"
45	PLANTING STRIP	10'-0"
46	PLANTING STRIP	10'-0"
47	PLANTING STRIP	10'-0"
48	PLANTING STRIP	10'-0"
49	PLANTING STRIP	10'-0"
50	PLANTING STRIP	10'-0"
51	PLANTING STRIP	10'-0"
52	PLANTING STRIP	10'-0"
53	PLANTING STRIP	10'-0"
54	PLANTING STRIP	10'-0"
55	PLANTING STRIP	10'-0"
56	PLANTING STRIP	10'-0"
57	PLANTING STRIP	10'-0"
58	PLANTING STRIP	10'-0"
59	PLANTING STRIP	10'-0"
60	PLANTING STRIP	10'-0"
61	PLANTING STRIP	10'-0"
62	PLANTING STRIP	10'-0"
63	PLANTING STRIP	10'-0"
64	PLANTING STRIP	10'-0"
65	PLANTING STRIP	10'-0"
66	PLANTING STRIP	10'-0"
67	PLANTING STRIP	10'-0"
68	PLANTING STRIP	10'-0"
69	PLANTING STRIP	10'-0"
70	PLANTING STRIP	10'-0"
71	PLANTING STRIP	10'-0"
72	PLANTING STRIP	10'-0"
73	PLANTING STRIP	10'-0"
74	PLANTING STRIP	10'-0"
75	PLANTING STRIP	10'-0"
76	PLANTING STRIP	10'-0"
77	PLANTING STRIP	10'-0"
78	PLANTING STRIP	10'-0"
79	PLANTING STRIP	10'-0"
80	PLANTING STRIP	10'-0"
81	PLANTING STRIP	10'-0"
82	PLANTING STRIP	10'-0"
83	PLANTING STRIP	10'-0"
84	PLANTING STRIP	10'-0"
85	PLANTING STRIP	10'-0"
86	PLANTING STRIP	10'-0"
87	PLANTING STRIP	10'-0"
88	PLANTING STRIP	10'-0"
89	PLANTING STRIP	10'-0"
90	PLANTING STRIP	10'-0"
91	PLANTING STRIP	10'-0"
92	PLANTING STRIP	10'-0"
93	PLANTING STRIP	10'-0"
94	PLANTING STRIP	10'-0"
95	PLANTING STRIP	10'-0"
96	PLANTING STRIP	10'-0"
97	PLANTING STRIP	10'-0"
98	PLANTING STRIP	10'-0"
99	PLANTING STRIP	10'-0"
100	PLANTING STRIP	10'-0"

SECTION "L" (PUBLIC)
RESIDENTIAL STREET



ITEM	DESCRIPTION	WIDTH
1	PLANTING STRIP	10'-0"
2	PLANTING STRIP	10'-0"
3	PLANTING STRIP	10'-0"
4	PLANTING STRIP	10'-0"
5	PLANTING STRIP	10'-0"
6	PLANTING STRIP	10'-0"
7	PLANTING STRIP	10'-0"
8	PLANTING STRIP	10'-0"
9	PLANTING STRIP	10'-0"
10	PLANTING STRIP	10'-0"
11	PLANTING STRIP	10'-0"
12	PLANTING STRIP	10'-0"
13	PLANTING STRIP	10'-0"
14	PLANTING STRIP	10'-0"
15	PLANTING STRIP	10'-0"
16	PLANTING STRIP	10'-0"
17	PLANTING STRIP	10'-0"
18	PLANTING STRIP	10'-0"
19	PLANTING STRIP	10'-0"
20	PLANTING STRIP	10'-0"
21	PLANTING STRIP	10'-0"
22	PLANTING STRIP	10'-0"
23	PLANTING STRIP	10'-0"
24	PLANTING STRIP	10'-0"
25	PLANTING STRIP	10'-0"
26	PLANTING STRIP	10'-0"
27	PLANTING STRIP	10'-0"
28	PLANTING STRIP	10'-0"
29	PLANTING STRIP	10'-0"
30	PLANTING STRIP	10'-0"
31	PLANTING STRIP	10'-0"
32	PLANTING STRIP	10'-0"
33	PLANTING STRIP	10'-0"
34	PLANTING STRIP	10'-0"
35	PLANTING STRIP	10'-0"
36	PLANTING STRIP	10'-0"
37	PLANTING STRIP	10'-0"
38	PLANTING STRIP	10'-0"
39	PLANTING STRIP	10'-0"
40	PLANTING STRIP	10'-0"
41	PLANTING STRIP	10'-0"
42	PLANTING STRIP	10'-0"
43	PLANTING STRIP	10'-0"
44	PLANTING STRIP	10'-0"
45	PLANTING STRIP	10'-0"
46	PLANTING STRIP	10'-0"
47	PLANTING STRIP	10'-0"
48	PLANTING STRIP	10'-0"
49	PLANTING STRIP	10'-0"
50	PLANTING STRIP	10'-0"
51	PLANTING STRIP	10'-0"
52	PLANTING STRIP	10'-0"
53	PLANTING STRIP	10'-0"
54	PLANTING STRIP	10'-0"
55	PLANTING STRIP	10'-0"
56	PLANTING STRIP	10'-0"
57	PLANTING STRIP	10'-0"
58	PLANTING STRIP	10'-0"
59	PLANTING STRIP	10'-0"
60	PLANTING STRIP	10'-0"
61	PLANTING STRIP	10'-0"
62	PLANTING STRIP	10'-0"
63	PLANTING STRIP	10'-0"
64	PLANTING STRIP	10'-0"
65	PLANTING STRIP	10'-0"
66	PLANTING STRIP	10'-0"
67	PLANTING STRIP	10'-0"
68	PLANTING STRIP	10'-0"
69	PLANTING STRIP	10'-0"
70	PLANTING STRIP	10'-0"
71	PLANTING STRIP	10'-0"
72	PLANTING STRIP	10'-0"
73	PLANTING STRIP	10'-0"
74	PLANTING STRIP	10'-0"
75	PLANTING STRIP	10'-0"
76	PLANTING STRIP	10'-0"
77	PLANTING STRIP	10'-0"
78	PLANTING STRIP	10'-0"
79	PLANTING STRIP	10'-0"
80	PLANTING STRIP	10'-0"
81	PLANTING STRIP	10'-0"
82	PLANTING STRIP	10'-0"
83	PLANTING STRIP	10'-0"
84	PLANTING STRIP	10'-0"
85	PLANTING STRIP	10'-0"
86	PLANTING STRIP	10'-0"
87	PLANTING STRIP	10'-0"
88	PLANTING STRIP	10'-0"
89	PLANTING STRIP	10'-0"
90	PLANTING STRIP	10'-0"
91	PLANTING STRIP	10'-0"
92	PLANTING STRIP	10'-0"
93	PLANTING STRIP	10'-0"
94	PLANTING STRIP	10'-0"
95	PLANTING STRIP	10'-0"
96	PLANTING STRIP	10'-0"
97	PLANTING STRIP	10'-0"
98	PLANTING STRIP	10'-0"
99	PLANTING STRIP	10'-0"
100	PLANTING STRIP	10'-0"

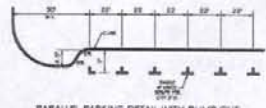
SECTION "M" (PUBLIC)
ENTRANCE ROAD FROM B&E HIGHWAY TO STREET "O"



ITEM	DESCRIPTION	WIDTH
1	PLANTING STRIP	10'-0"
2	PLANTING STRIP	10'-0"
3	PLANTING STRIP	10'-0"
4	PLANTING STRIP	10'-0"
5	PLANTING STRIP	10'-0"
6	PLANTING STRIP	10'-0"
7	PLANTING STRIP	10'-0"
8	PLANTING STRIP	10'-0"
9	PLANTING STRIP	10'-0"
10	PLANTING STRIP	10'-0"
11	PLANTING STRIP	10'-0"
12	PLANTING STRIP	10'-0"
13	PLANTING STRIP	10'-0"
14	PLANTING STRIP	10'-0"
15	PLANTING STRIP	10'-0"
16	PLANTING STRIP	10'-0"
17	PLANTING STRIP	10'-0"
18	PLANTING STRIP	10'-0"
19	PLANTING STRIP	10'-0"
20	PLANTING STRIP	10'-0"
21	PLANTING STRIP	10'-0"
22	PLANTING STRIP	10'-0"
23	PLANTING STRIP	10'-0"
24	PLANTING STRIP	10'-0"
25	PLANTING STRIP	10'-0"
26	PLANTING STRIP	10'-0"
27	PLANTING STRIP	10'-0"
28	PLANTING STRIP	10'-0"
29	PLANTING STRIP	10'-0"
30	PLANTING STRIP	10'-0"
31	PLANTING STRIP	10'-0"
32	PLANTING STRIP	10'-0"
33	PLANTING STRIP	10'-0"
34	PLANTING STRIP	10'-0"
35	PLANTING STRIP	10'-0"
36	PLANTING STRIP	10'-0"
37	PLANTING STRIP	10'-0"
38	PLANTING STRIP	10'-0"
39	PLANTING STRIP	10'-0"
40	PLANTING STRIP	10'-0"
41	PLANTING STRIP	10'-0"
42	PLANTING STRIP	10'-0"
43	PLANTING STRIP	10'-0"
44	PLANTING STRIP	10'-0"
45	PLANTING STRIP	10'-0"
46	PLANTING STRIP	10'-0"
47	PLANTING STRIP	10'-0"
48	PLANTING STRIP	10'-0"
49	PLANTING STRIP	10'-0"
50	PLANTING STRIP	10'-0"
51	PLANTING STRIP	10'-0"
52	PLANTING STRIP	10'-0"
53	PLANTING STRIP	10'-0"
54	PLANTING STRIP	10'-0"
55	PLANTING STRIP	10'-0"
56	PLANTING STRIP	10'-0"
57	PLANTING STRIP	10'-0"
58	PLANTING STRIP	10'-0"
59	PLANTING STRIP	10'-0"
60	PLANTING STRIP	10'-0"
61	PLANTING STRIP	10'-0"
62	PLANTING STRIP	10'-0"
63	PLANTING STRIP	10'-0"
64	PLANTING STRIP	10'-0"
65	PLANTING STRIP	10'-0"
66	PLANTING STRIP	10'-0"
67	PLANTING STRIP	10'-0"
68	PLANTING STRIP	10'-0"
69	PLANTING STRIP	10'-0"
70	PLANTING STRIP	10'-0"
71	PLANTING STRIP	10'-0"
72	PLANTING STRIP	10'-0"
73	PLANTING STRIP	10'-0"
74	PLANTING STRIP	10'-0"
75	PLANTING STRIP	10'-0"
76	PLANTING STRIP	10'-0"
77	PLANTING STRIP	10'-0"
78	PLANTING STRIP	10'-0"
79	PLANTING STRIP	10'-0"
80	PLANTING STRIP	10'-0"
81	PLANTING STRIP	10'-0"
82	PLANTING STRIP	10'-0"
83	PLANTING STRIP	10'-0"
84	PLANTING STRIP	10'-0"
85	PLANTING STRIP	10'-0"
86	PLANTING STRIP	10'-0"
87	PLANTING STRIP	10'-0"
88	PLANTING STRIP	10'-0"
89	PLANTING STRIP	10'-0"
90	PLANTING STRIP	10'-0"
91	PLANTING STRIP	10'-0"
92	PLANTING STRIP	10'-0"
93	PLANTING STRIP	10'-0"
94	PLANTING STRIP	10'-0"
95	PLANTING STRIP	10'-0"
96	PLANTING STRIP	10'-0"
97	PLANTING STRIP	10'-0"
98	PLANTING STRIP	10'-0"
99	PLANTING STRIP	10'-0"
100	PLANTING STRIP	10'-0"

ALTERNATIVE SECTION "E1" (PUBLIC)

DISCOVERY DRIVE (EXTENDED)
FIELD ROAD - BETWEEN WASHINGTON BOULEVARD AND DISCOVERY DRIVE (EXTENDED)



PARALLEL PARKING DETAIL WITH DUMP OUT
S.F.A.

PENGAD 800-631-6989
 #118 2 of 2
 X-182

REVISION	DATE	BY	DESCRIPTION

Applicant/Owner:
Crown Village Farm, LLC
440 S. 80th Ave
8000 Traver Crescent Drive
Suite 1200
Vienna, VA 22182

**ANNEXATION X-182
ROAD CODE WAIVER EXHIBIT
(CROSS SECTIONS)**

RODGERS CONSULTING
Enhancing the value of land assets
Rodgers Consulting, Inc.
1947 Crown Road, Suite 200
Crownsville, MD 21032
801.548.4700
801.548.4238 fax
801.573.8808
www.rodgers.com

DATE	BY	DATE

THE CROWN PROPERTY
Vision for a New Community
VIH ELECTION DISTRICT
MONTGOMERY COUNTY, MARYLAND

DATE	BY

© 2007 Montgomery County, Maryland. All rights reserved. See Section 7 of the Code, 2006, 140m.