

*SDP-9003-2021
14 Firstfield Road
Planning Commission Recommendation*

SDP-9003-2021

Design and development in accordance with the SK-8813-2021 Sketch Plan

The plan proposes:

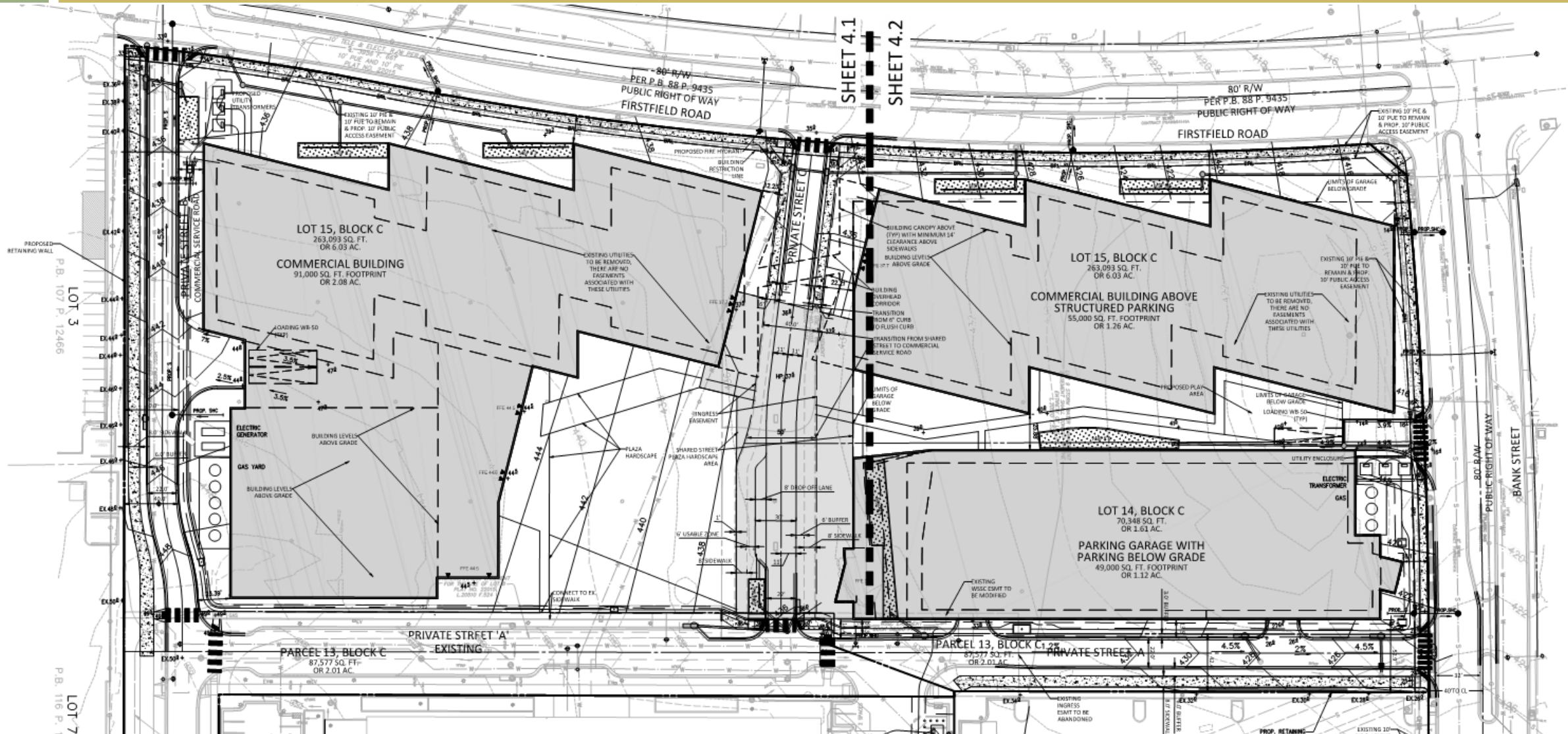
- 604,929 square feet of lab/office, R&D, and integrated light manufacturing
- Novavax Campus
- Open Space

Questions from the Joint Public Hearing

A joint public hearing was held for application SDP-9003-2021 on October 18, 2021

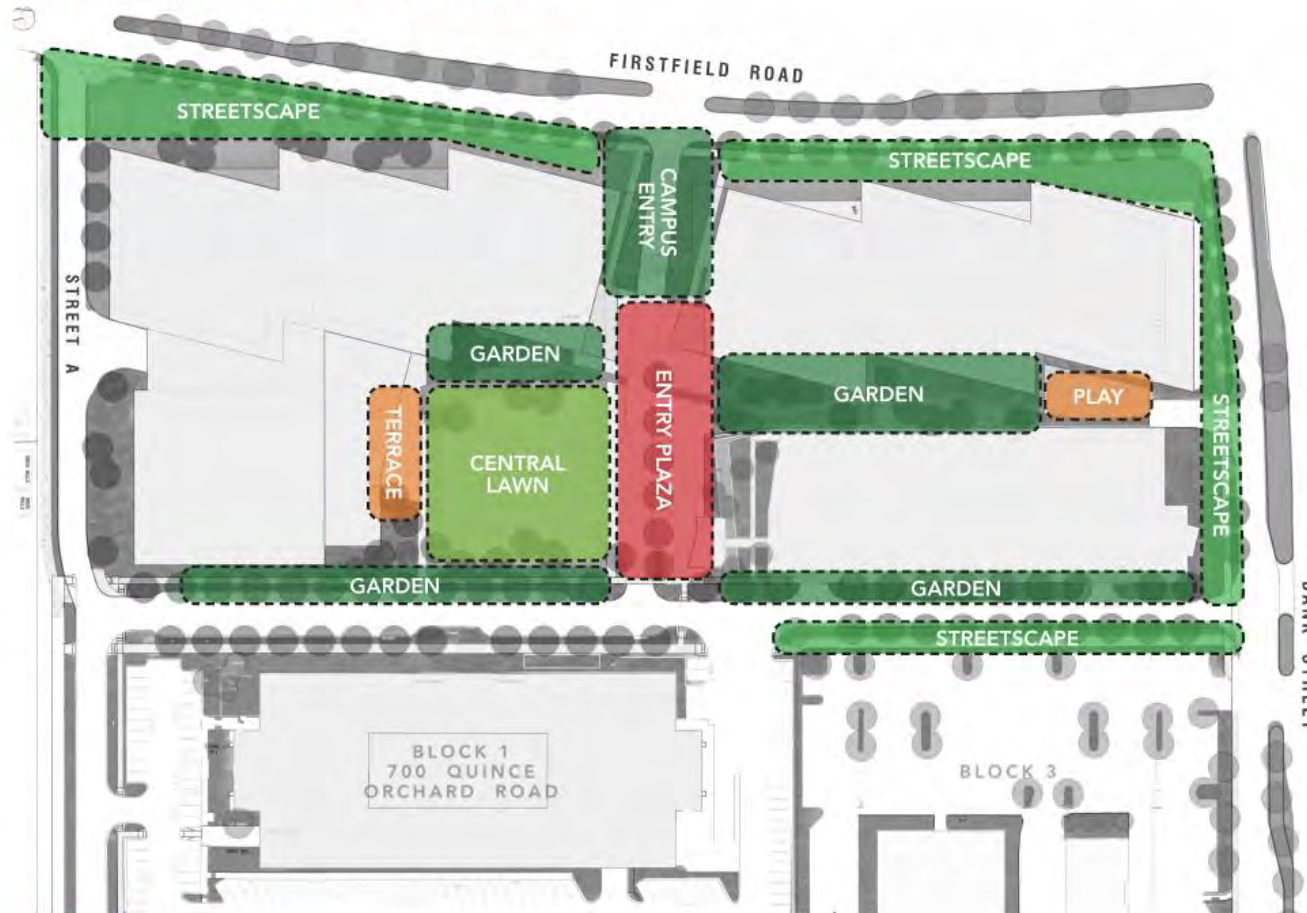
- Street Security
- Loading Dock Management Plan
- Stormwater Plans
- Intersection of Street A at Bank Street
- Landscaping Plants
- Shuttle Bus Service to existing Transit Centers

SDP-9003-2021: Overview



SDP-9003-2021: Open Space

OPEN SPACE DIAGRAM



ENTRY PLAZA VIEWS



SDP-9003-2021: Elevations



2 WEST ELEVATION - SOUTH BUILDING - ENLARGED
SCALE: 1/16" = 1'-0"



1 WEST ELEVATION - NORTH BUILDING - ENLARGED
SCALE: 1/16" = 1'-0"



SDP-9003-2021: Parking Garage



4 EAST ELEVATION, MFG - ENLARGED ELEVATION
SCALE: 1/16" = 1'-0"



1 EAST ELEVATION, PARKING GARAGE - ENLARGED ELEVATION
SCALE: 1/16" = 1'-0"

2 NORTH ELEVATION, PARKING GARAGE - ENLARGED ELEVATION
SCALE: 1/16" = 1'-0"

Thank you!

