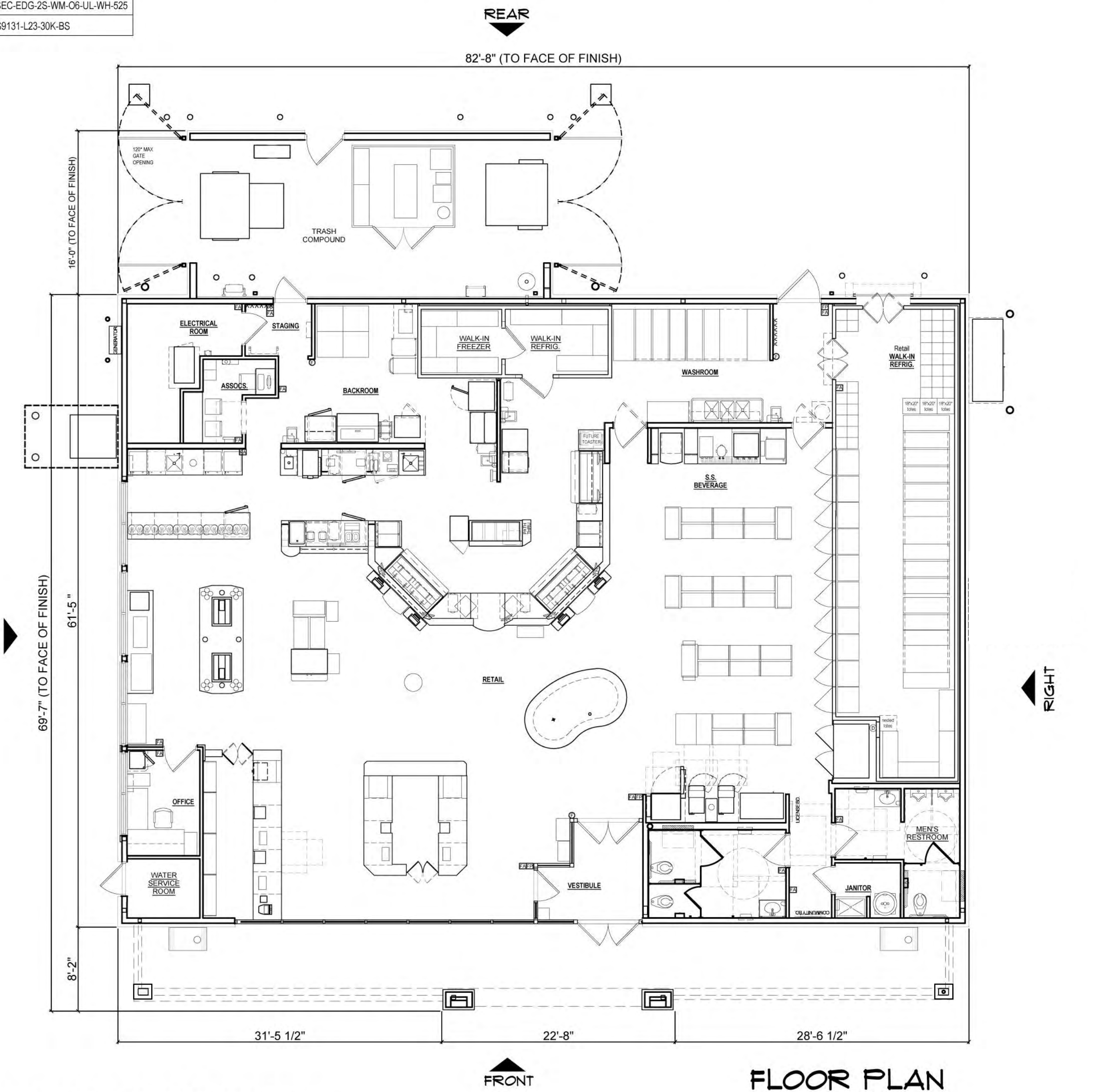
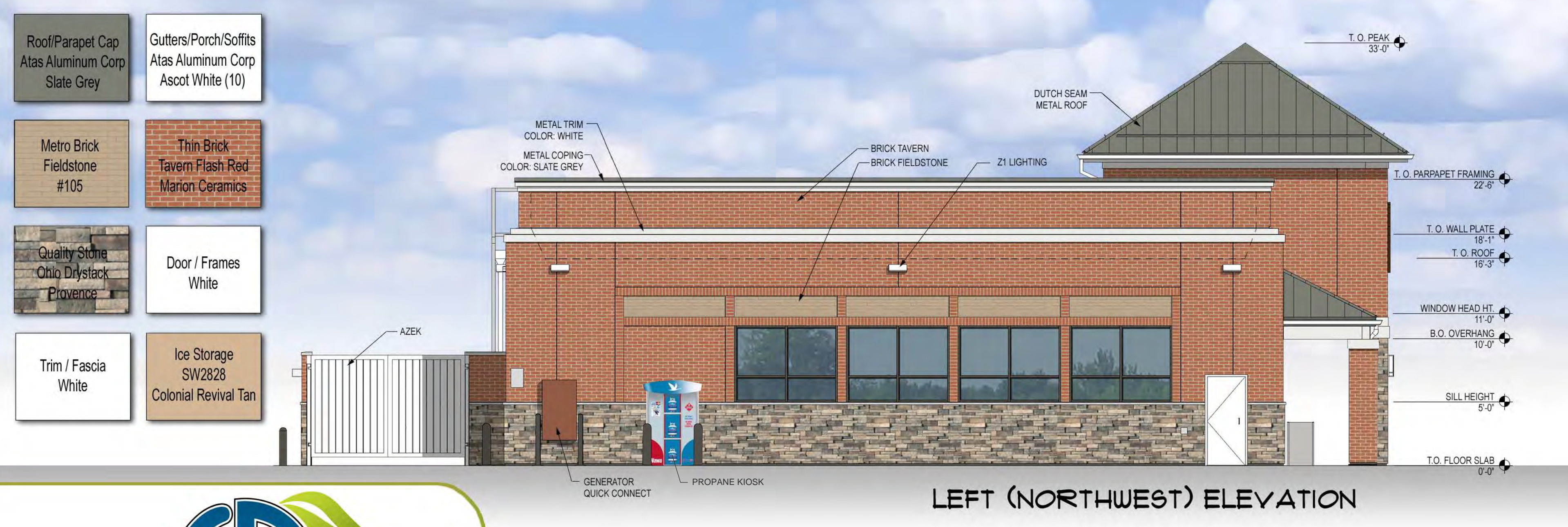




MANUFACTURE	TYPE	MODEL NO.
CREE LIGHTING	Z1	SEC-EDG-2S-WM-06-UL-WH-525
SCOTT LIGHTING	WC1	S9131-L23-30K-BS



NOTE: SIGNAGE IS SHOWN FOR REFERENCE ONLY SEPARATE PERMIT REQUIRED



- Roof/Parapet Cap: Atas Aluminum Corp Slate Grey
- Gutters/Porch/Soffits: Atas Aluminum Corp Ascot White (10)
- Metro Brick Fieldstone #105
- Thin Brick Tavern Flash Red Marion Ceramics
- Quality Stone Ohio Drystack Provence
- Door / Frames White
- Trim / Fascia White
- Ice Storage SW2828 Colonial Revival Tan



WAWA W50_v.2019.01 - STORE #8536
S.Frederick Ave. (Rt. 355) & Education Blvd., Gaithersburg, MD • C&P Project #2190192 • 01-07-2022

CITY OF GAITHERSBURG PLANNING COMMISSION
31 SOUTH SUMMIT AVENUE, GAITHERSBURG, MARYLAND 20877

SITE PLAN APPROVAL

AT THE REGULARLY SCHEDULED MEETING OF THE PLANNING COMMISSION HELD ON December 1, 2021
APPLICATION NO. SP-8983-2021 WAS GRANTED

FINAL SITE PLAN APPROVAL
WITH FOUR (4) CONDITIONS - SEE S.D.M. LETTER
DATE 1/24/2022 BY *Janine Taylor*

NOTE: ANY REVISIONS TO SIGNED PLANS MUST BE APPROVED BY THE PLANNING COMMISSION OR PLANNING STAFF

T.O. CANOPY
25'-2"

B.O. TRUSS
14'-0"

SIGNAGE FOR ILLUSTRATIVE PURPOSE ONLY

SIGNAGE FOR ILLUSTRATIVE PURPOSE ONLY

CLEAR HT.
14'-10 1/2"

CANOPY END ELEVATION

CANOPY SIDE ELEVATION



The Wawa fuel canopy is a registered service mark in the U.S. Patent and Trademark Office. The fuel canopy, as well as Wawa's brand names, slogans, logos, service marks, and other trademarks of Wawa's goods, services, and promotions belong exclusively to Wawa, Inc. and/or, Wild Goose Holding Co., Inc. and are protected from copying and simulation under national and international trademark and copyright laws and treaties throughout the world.



WAWA GAS CANOPY STACKED 6 - STORE #8536

S. Frederick Ave. (Rt. 355) & Education Blvd., Gaithersburg, MD • C&P Project #2190192 • 07-23-2021

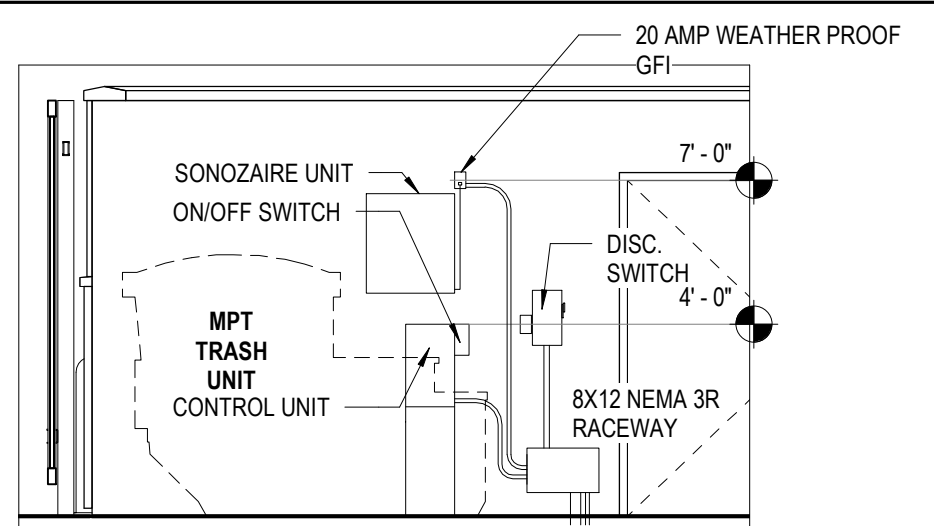
CITY OF GAITHERSBURG PLANNING COMMISSION
31 SOUTH SUMMIT AVENUE, GAITHERSBURG, MARYLAND 20877

SITE PLAN APPROVAL

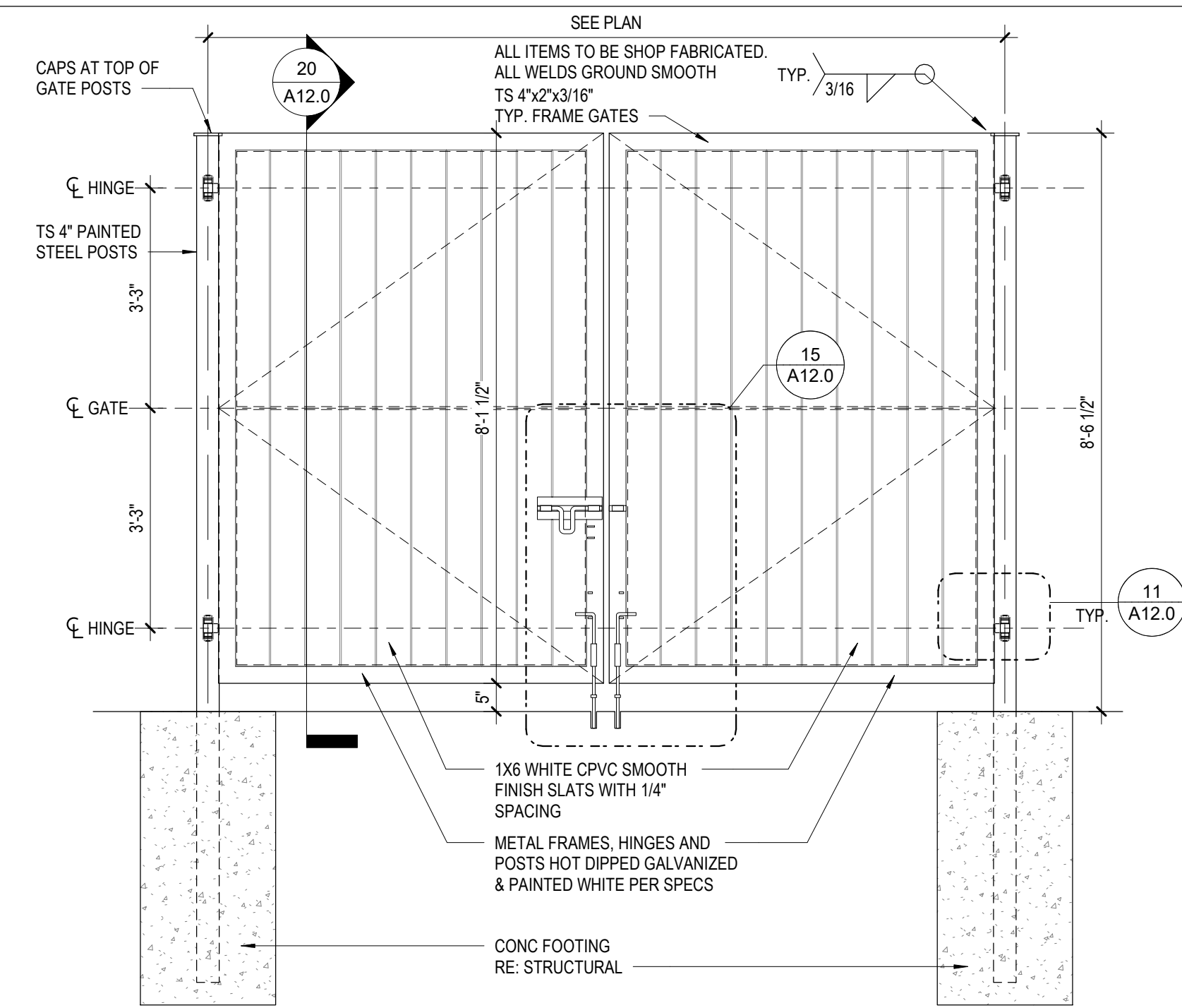
AT THE REGULARLY SCHEDULED MEETING OF THE PLANNING COMMISSION HELD ON December 1, 2021
APPLICATION NO. SP-8983-2021 WAS GRANTED

FINAL SITE PLAN APPROVAL
WITH FOUR (4) CONDITIONS SEE S.D.A. LETTER.
DATE 1/24/2022 BY *Jessica Seibert*

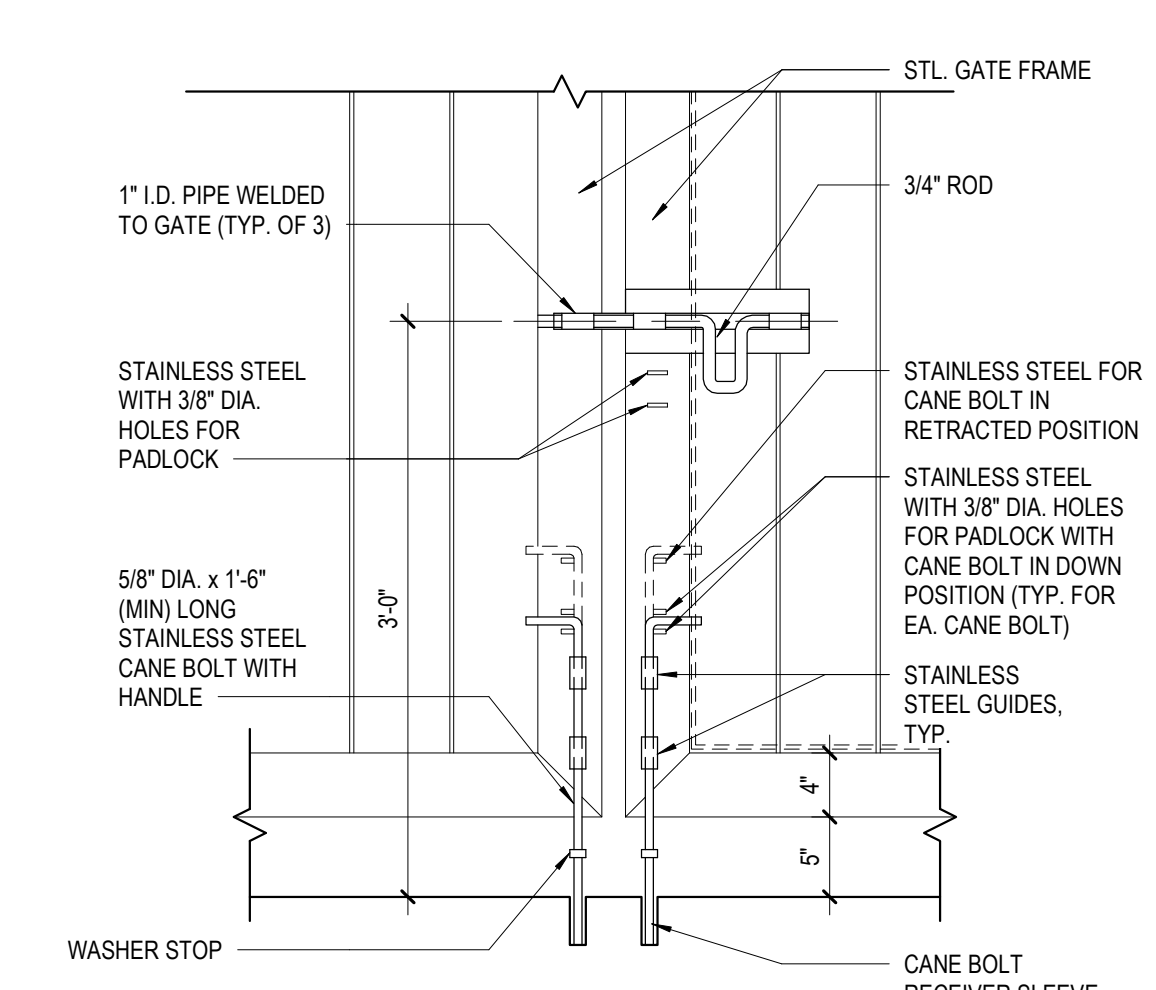
NOTE: ANY REVISIONS TO SIGNED PLANS MUST BE APPROVED BY THE PLANNING COMMISSION OR PLANNING STAFF



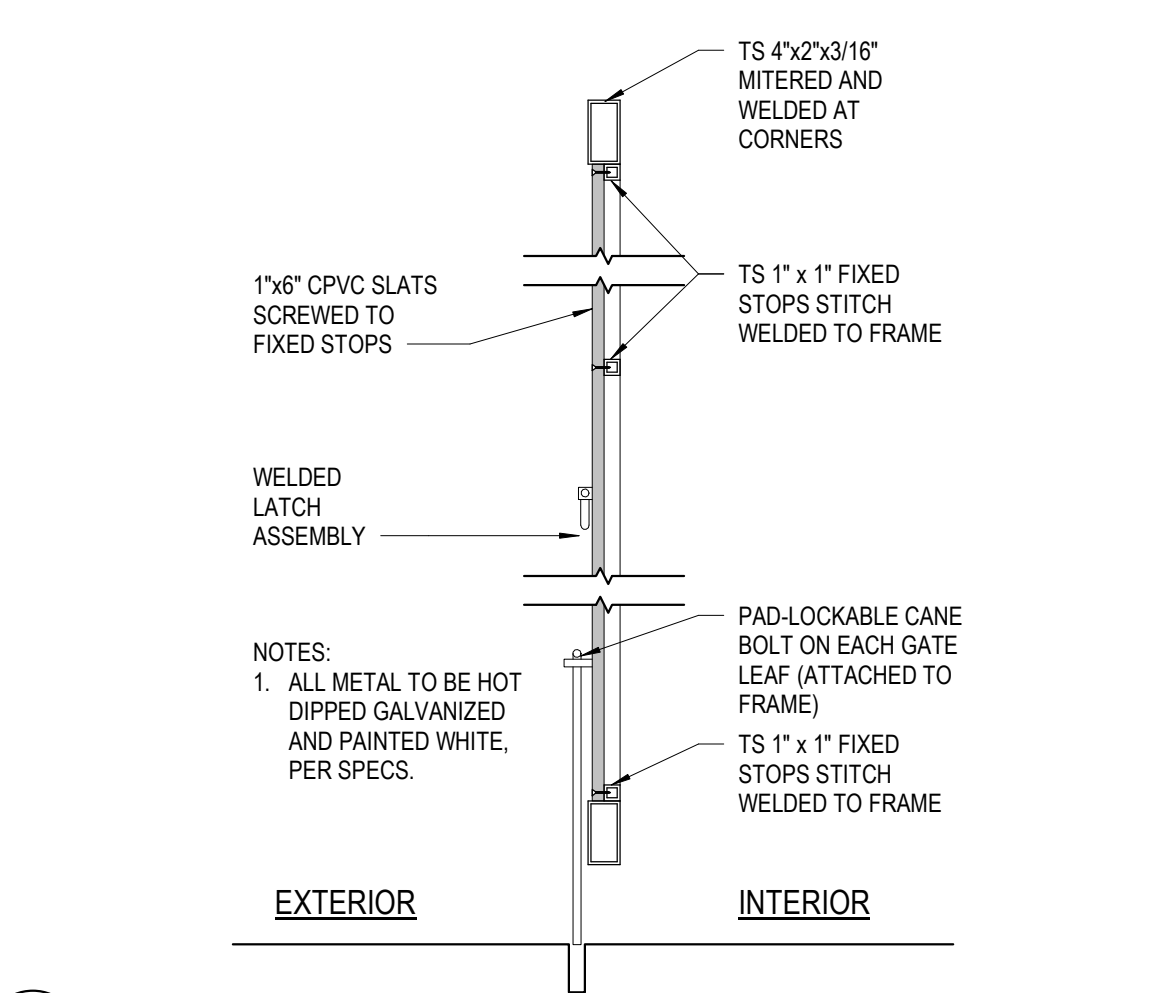
5 PARTIAL INT. ELEVATION
A12.0 14" = 1'-0"



10 TYPICAL GATE ELEVATION
A12.0 12" = 1'-0"



15 CANE BOLT & LATCH DETAIL
A12.0 1" = 1'-0"

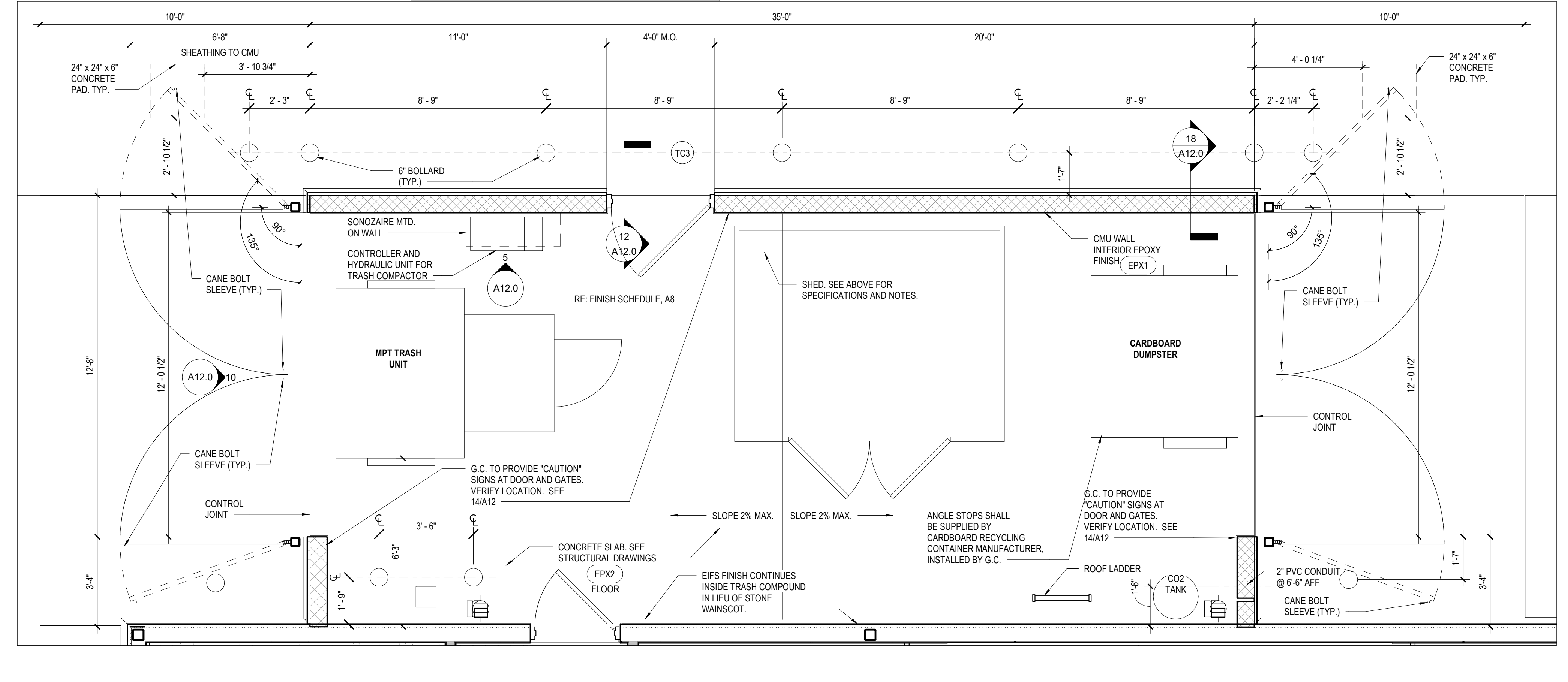


20 GATE DETAIL
A12.0 1" = 1'-0"

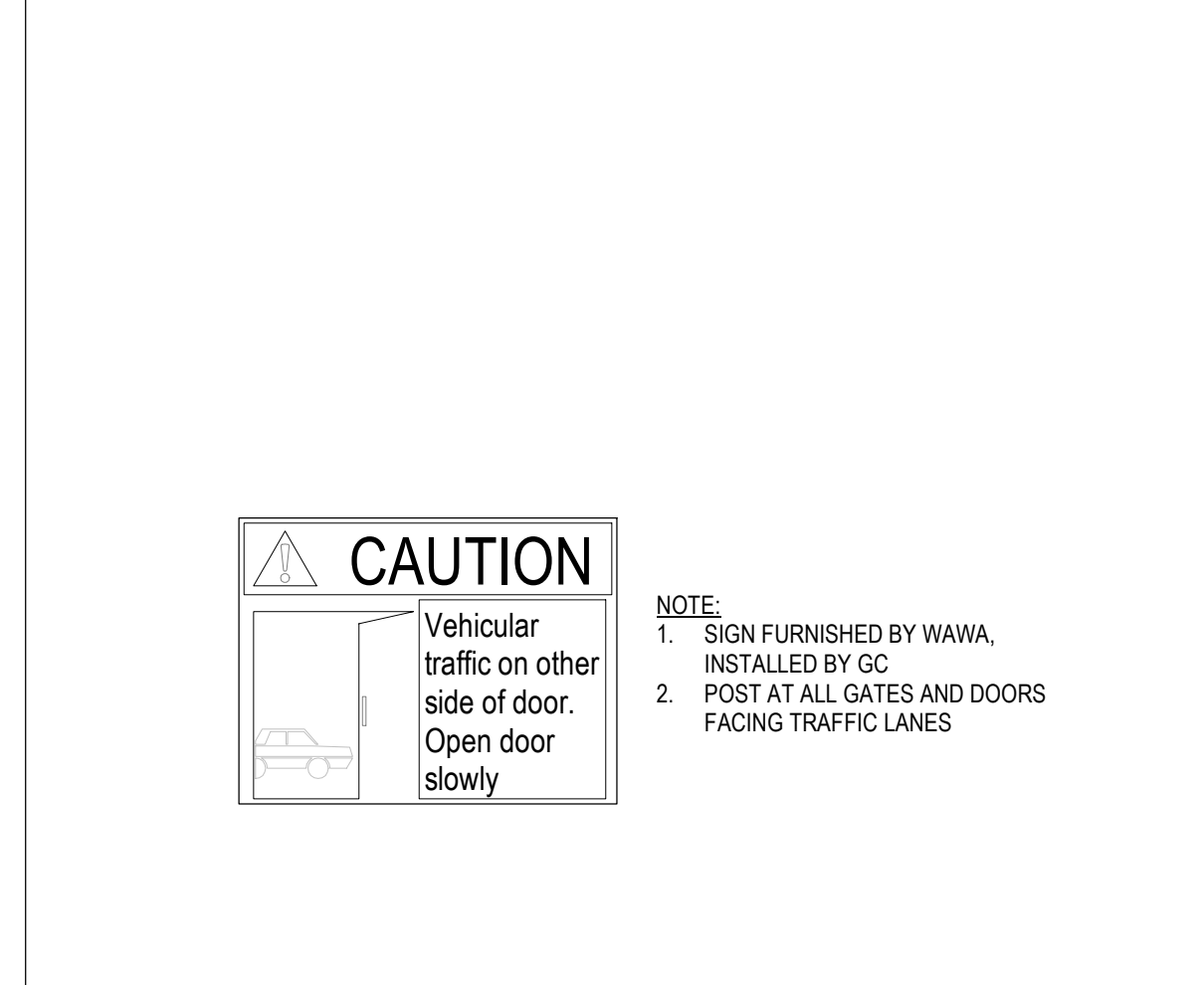
CITY OF GAITHERSBURG PLANNING COMMISSION
31 SOUTH SUMMIT AVENUE, GAITHERSBURG, MARYLAND 20877
SITE PLAN APPROVAL
AT THE REGULARLY SCHEDULED MEETING OF THE PLANNING COMMISSION HELD ON: December 1, 2021
APPLICATION NO.: SP-8983-2021 WAS GRANTED
FINAL SITE PLAN APPROVAL
WITH FIGURE 1 & 4 CONDITIONS SEE S.D.A. LETTER.
DATE: 1/24/2022 BY: *Jessica Salas*
NOTE: ANY REVISIONS TO SIGNED PLANS MUST BE APPROVED BY THE PLANNING COMMISSION OR PLANNING STAFF

GENERAL NOTES
1. REFER TO ELECTRICAL SHEETS FOR ELECTRICAL AND MECHANICAL REQUIREMENTS.
2. REFER TO STRUCTURAL SHEETS FOR STRUCTURAL REQUIREMENTS.
3. REFER TO LATEST SITE PLAN FOR ADDITIONAL REQUIREMENTS.
4. REFER TO SHEET A4 FOR FINISH SCHEDULE.

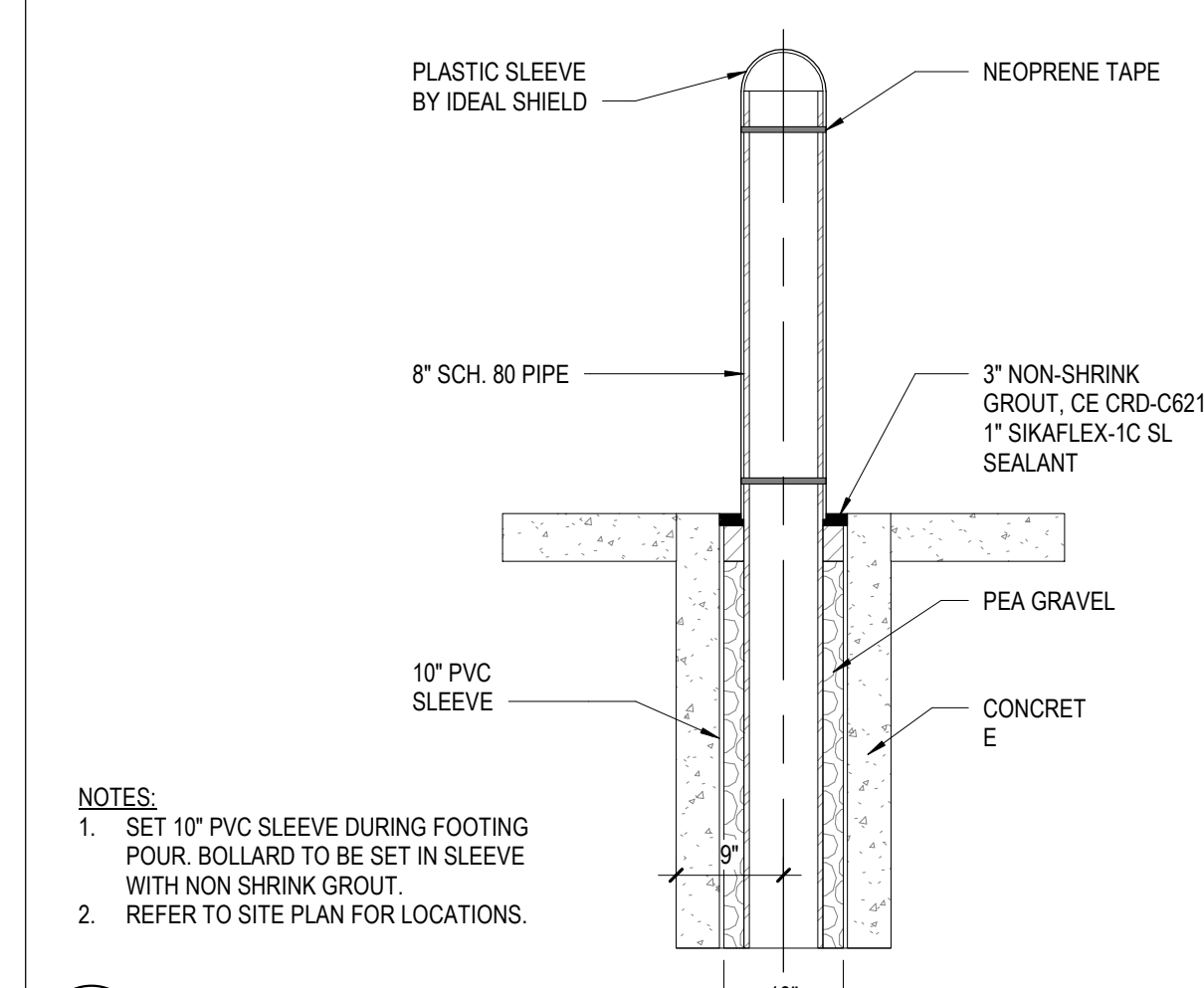
SHED SPECIFICATIONS
MFR: US LEISURE
MODEL: 10'-0" (WIDTH) X 8'-0" (DEPTH) STRONGHOLD RESIN STORAGE SHED #151479
COLOR: ONE COLOR (BROWN)
NOTES: FURNISHED AND INSTALLED BY G.C. UNDER SEPARATE PERMIT



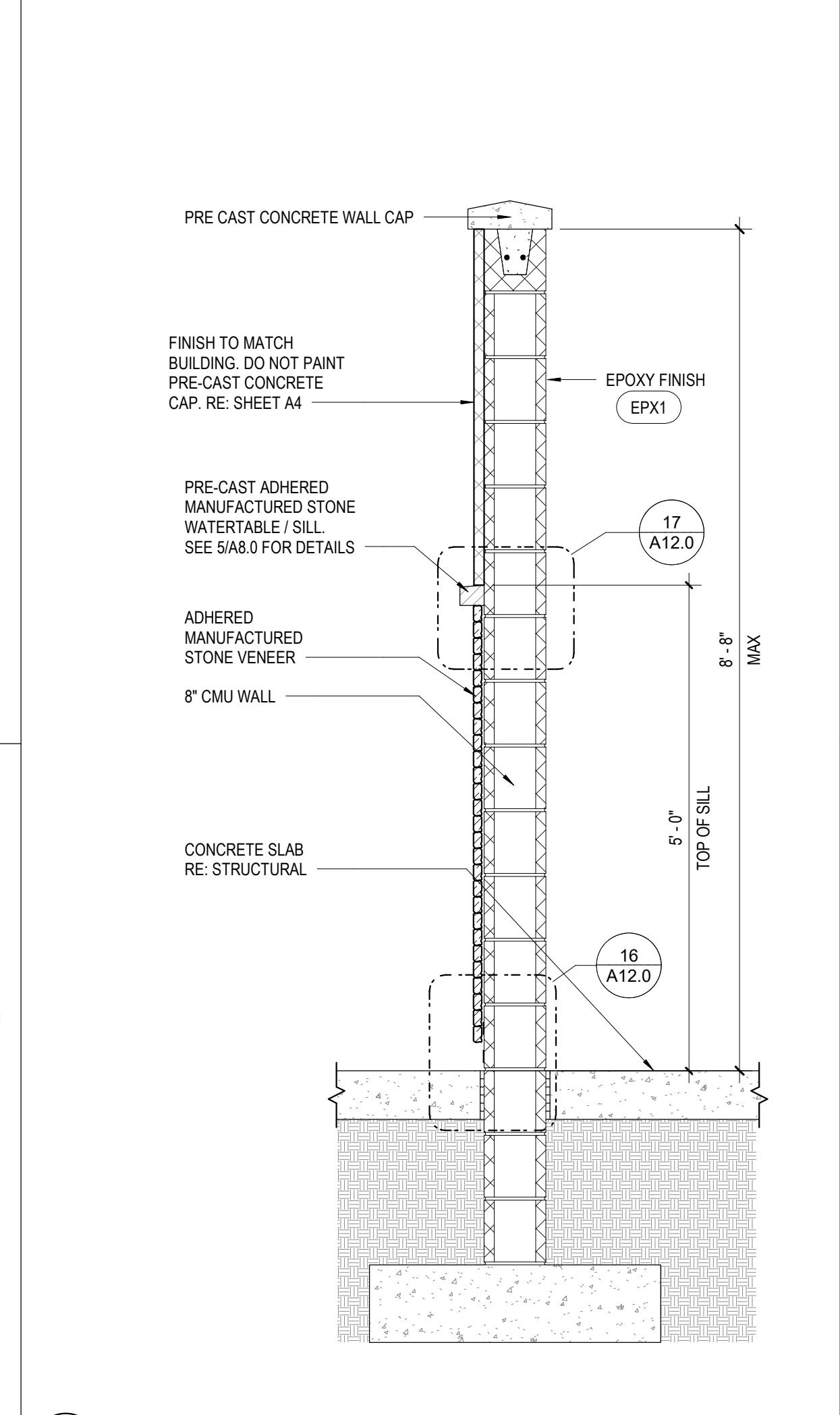
3 TRASH COMPOUND PLAN
A12.0 3/8" = 1'-0"



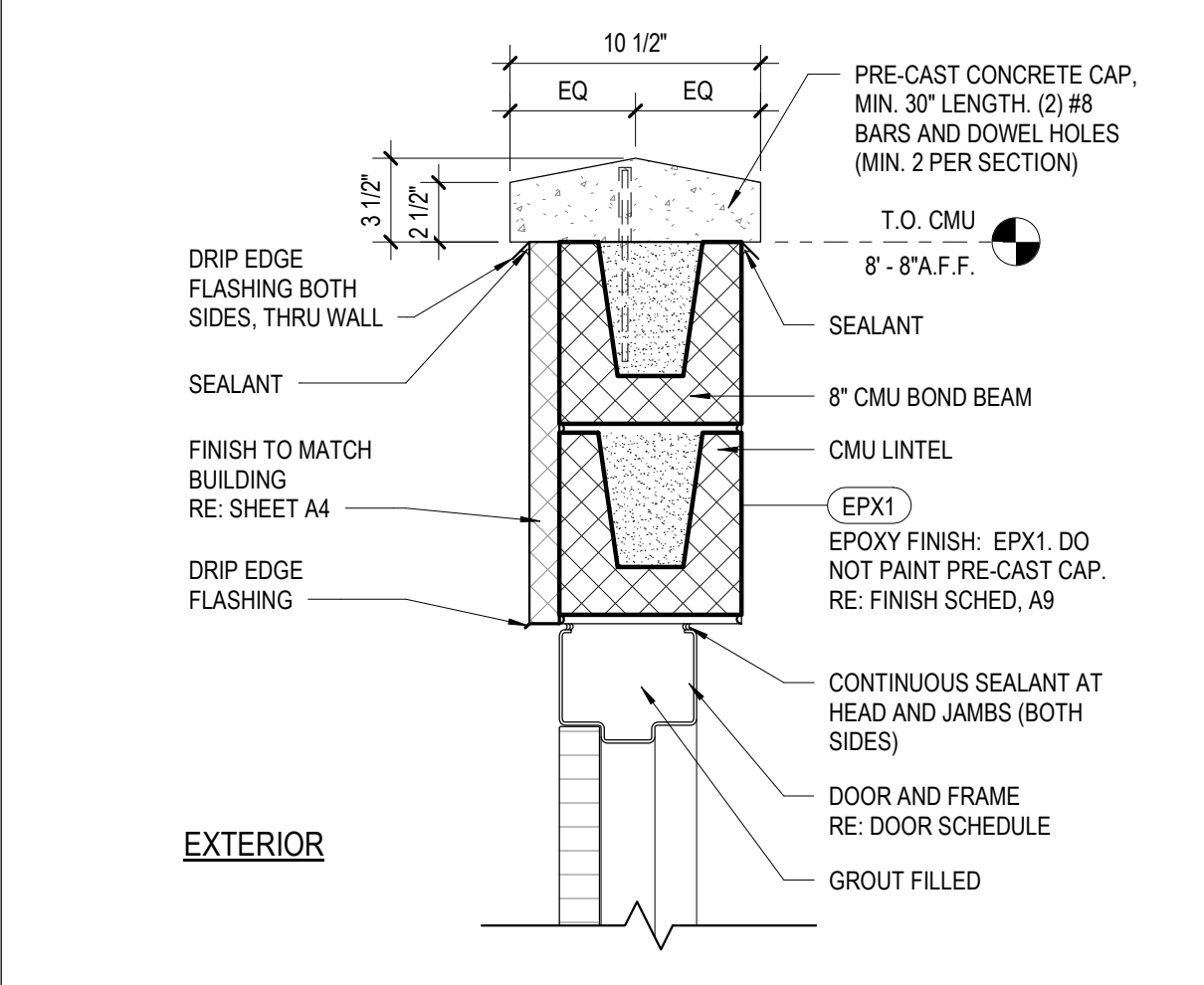
14 SIGN AT DOORS AND GATES
A12.0 3/4" = 1'-0"



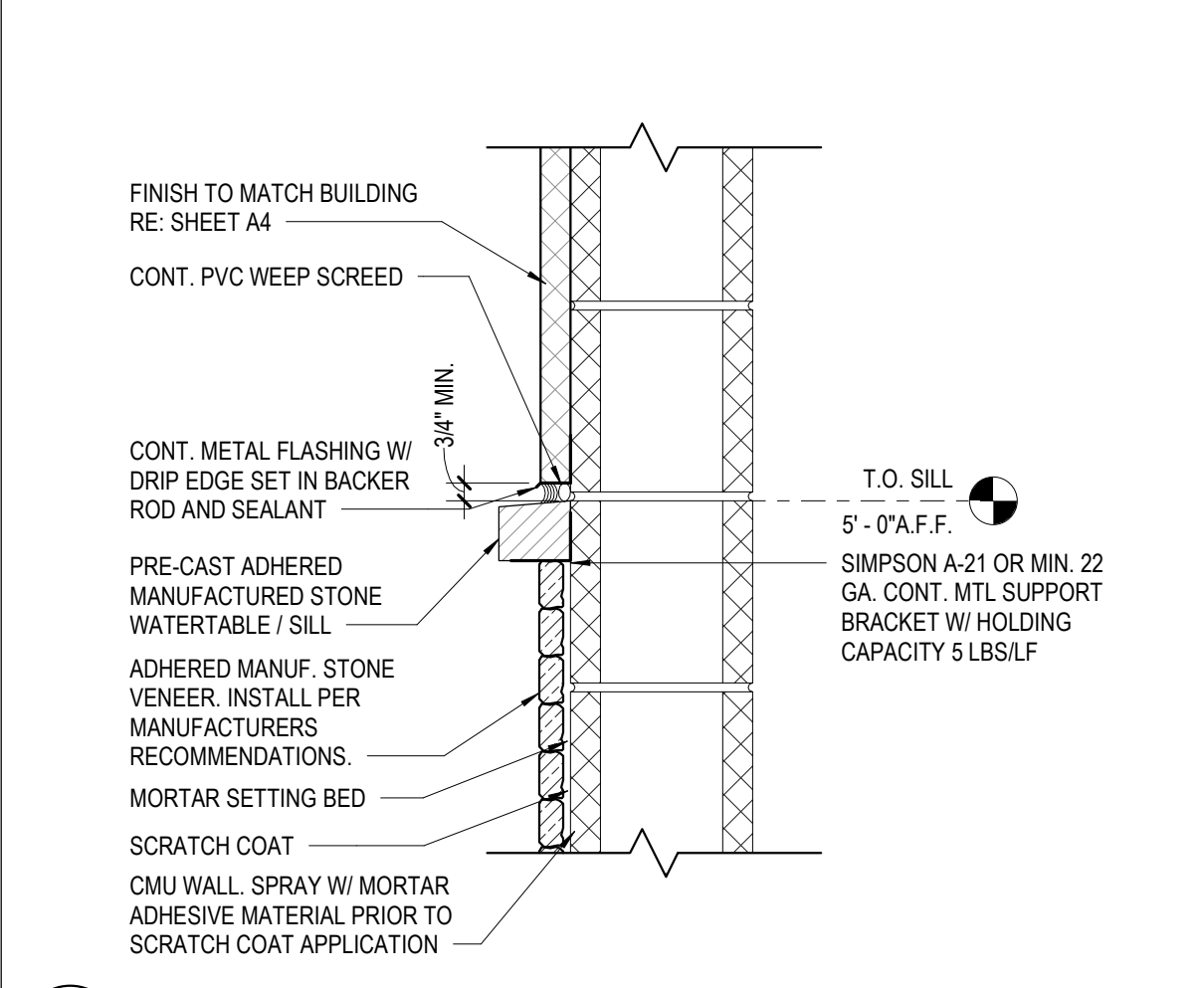
19 BOLLARD DETAIL
A12.0 3/4" = 1'-0"



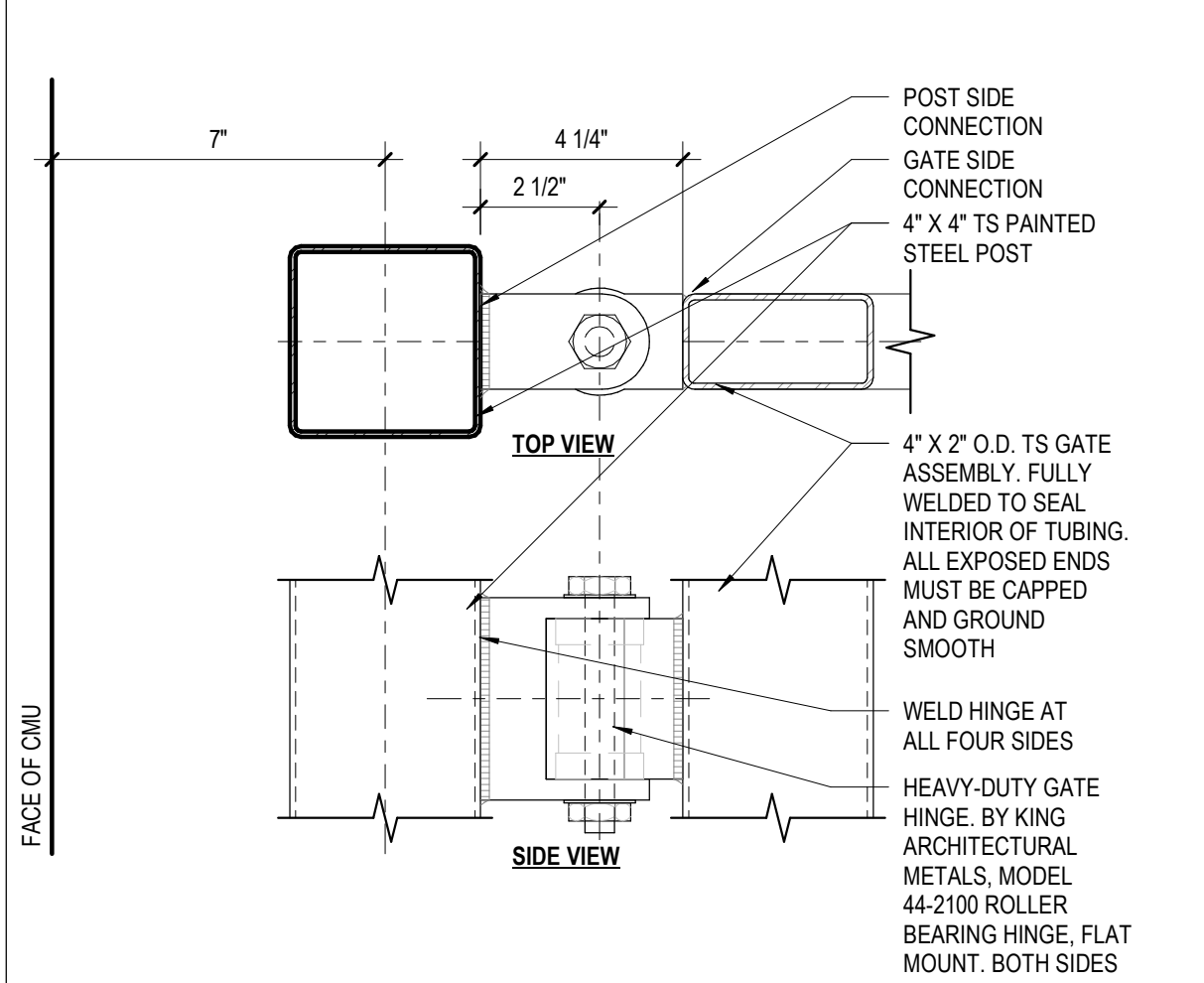
18 WALL SECTION
A12.0 3/4" = 1'-0"



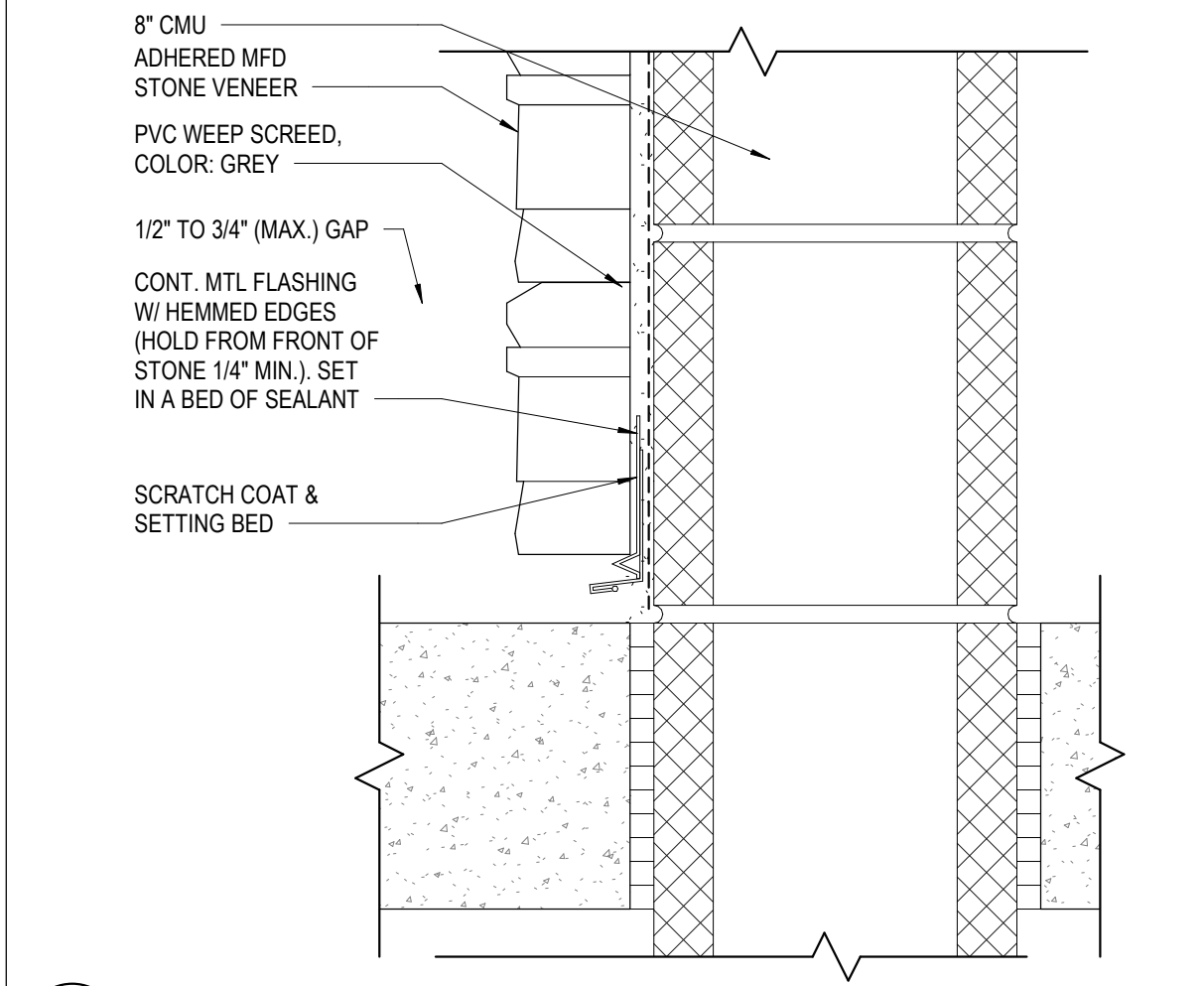
12 HEAD DETAIL
A12.0 1 1/2" = 1'-0"



17 SILL DETAIL
A12.0 1 1/2" = 1'-0"



11 HINGE DETAIL
A12.0 3" = 1'-0"



16 BASE DETAIL
A12.0 3" = 1'-0"

CAUTION
Vehicular traffic on other side of door. Open door slowly

NOTES:
1. SET 10" PVC SLEEVE DURING FOOTING POUR. BOLLARD TO BE SET IN SLEEVE WITH NON SHRINK GROUT.
2. REFER TO SITE PLAN FOR LOCATIONS.

1925 Prospect Ave.
Orlando, FL 32814
P (407) 661-9100
F (407) 661-9101
www.c-p.com

4
Cuhaci & Peterson
Architects Engineers Planners

CLIENT NAME
WAWA
260 W. BALTIMORE PIKE
WAWA, PA 19063

PROJECT NAME
W50 PROTOTYPE 2019.01-MA
STORE #XXX

MAIN ST. & CENTRAL AVE.
ANYWHERE, ST 12345

TRASH COMPOUND

No.	Description	Date
A	REV (2016.01)	MAR16
B	REV (2016.02)	AUG16
C	REV (2017.01)	MAY17
D	REV (2018.01)	TBD
E	REV (2019.01)	JUL2019

Revision Schedule

PROJECT NO. XXXXXXXX
DATE MM-DD-YYYY
DRAWN C-P/PHL
CHECKED [Signature]

A12.0