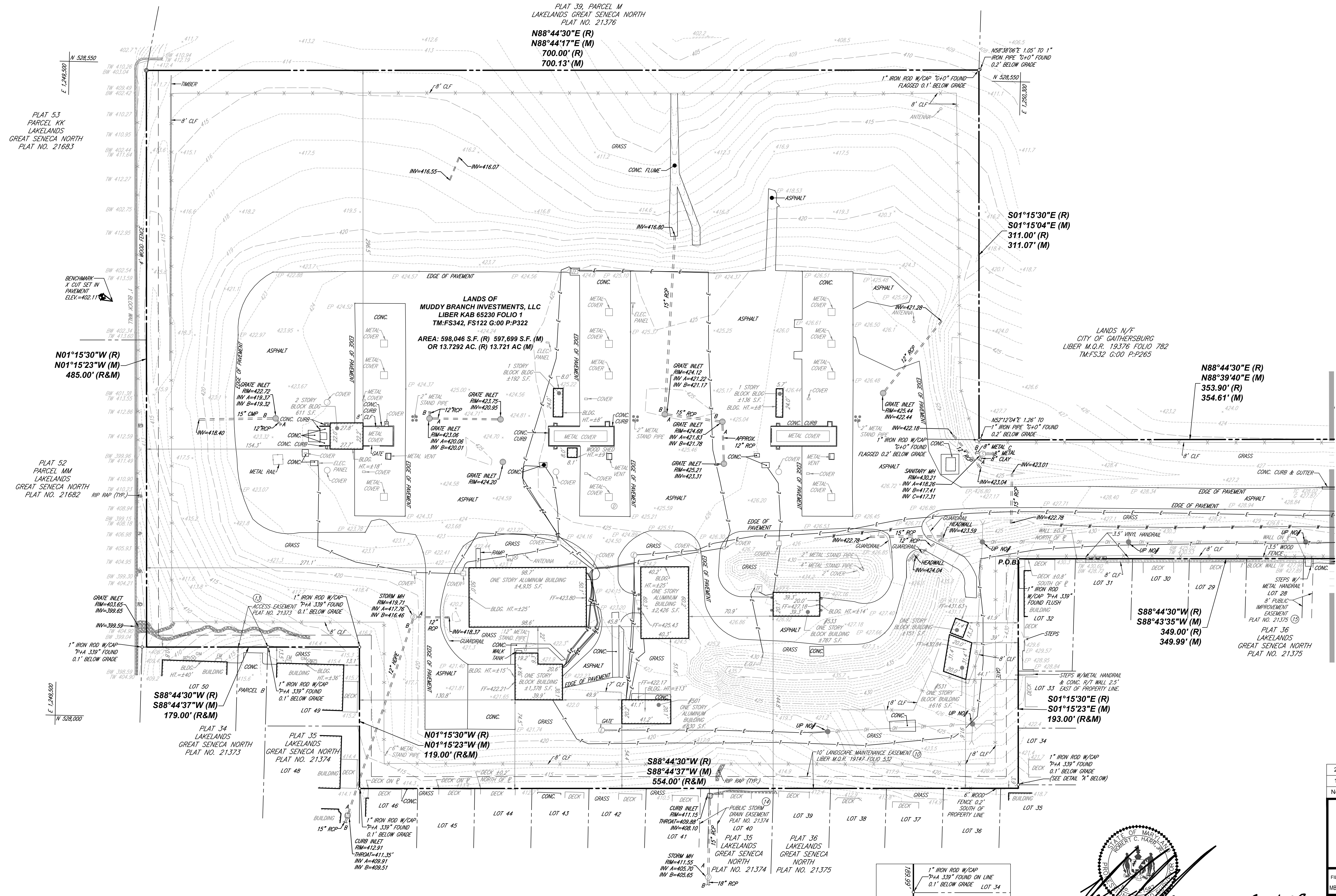






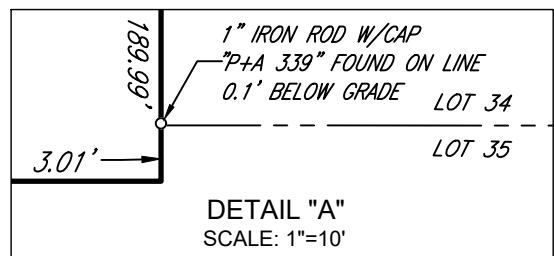
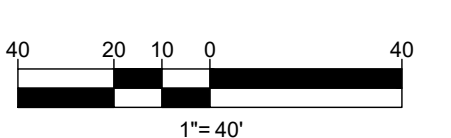
LEGEND

- (M) MEASURED
- (R) RECORD
- P.O.B. POINT OF BEGINNING
- OH OVERHEAD WIRES
- ULI UTILITY POLE
- EP ELECTRIC BOX
- EM ELECTRIC METER
- TR TRANSFORMER
- HVAC HVAC UNIT
- SM SANITARY MANHOLE
- SDM STORM DRAIN MANHOLE
- TM TELEPHONE MANHOLE
- EM ELECTRIC MANHOLE
- WM WATER MANHOLE
- GM GAS METER
- S SIGN
- B BOLLARD
- WV WATER VALVE
- PA PAINTED ARROW
- TE TITLE REPORT EXCEPTION
- BM BENCHMARK
- CLF CHAINLINK FENCE
- E.O.I. END OF INFORMATION
- X 123.45 EXISTING SPOT ELEVATION
- X TC 123.45 EXIST. TOP OF CURB ELEVATION
- X G 122.95 EXIST. GUTTER ELEVATION
- X TW 123.45 EXIST. TOP OF WALL ELEVATION
- X BW 122.95 EXIST. BOTTOM OF WALL ELEVATION
- X EP 122.95 EXIST. EDGE OF PAVEMENT ELEVATION
- X TI 122.95 EXIST. TOP OF ISLAND ELEVATION
- 123 EXISTING CONTOUR
- METAL GUARDRAIL
- FENCE
- STREET LIGHT
- TREELINE
- APPROX. LOC. UNDERGROUND GAS LINE PER PRIVATE UTILITY MARKOUT
- APPROX. LOC. UNDERGROUND WATER LINE PER PRIVATE UTILITY MARKOUT
- APPROX. LOC. UNDERGROUND TEL. LINE PER PRIVATE UTILITY MARKOUT
- APPROX. LOC. UNDERGROUND ELEC. LINE PER PRIVATE UTILITY MARKOUT
- APPROX. LOC. UNDERGROUND UNKNOWN LINE PER PRIVATE UTILITY MARKOUT
- RIP-RAP
- ⊙ PROP. CORNER TO BE SET



MATCH LINE SEE SHEET 1 OF 2

BOHLER ENGINEERING, ALL RIGHTS RESERVED. NO PART OF THIS DOCUMENT IS TO BE REPRODUCED OR TRANSMITTED IN ANY FORM OR BY ANY MEANS, ELECTRONIC OR MECHANICAL, INCLUDING PHOTOCOPYING, RECORDING, OR BY ANY INFORMATION STORAGE AND RETRIEVAL SYSTEM, WITHOUT THE WRITTEN PERMISSION OF BOHLER ENGINEERING, INC.



**ROBERT C. HARR, JR.**  
MARYLAND PROFESSIONAL LAND SURVEYOR NO. 21587  
EXPIRATION DATE: JANUARY 16, 2025

2-14-23 DATE

2	REVISED PER CLIENT COMMENTS	JB	02/14/23
1	REVISED PER CLIENT COMMENTS	SB	01/13/23
No.	DESCRIPTION OF REVISION	BY:	DATE

**BOUNDARY & TOPOGRAPHIC SURVEY**  
**PLEASANTS MUDDY BRANCH**

770 MUDDY BRANCH ROAD  
GAITHERSBURG (9TH) ELECTION DISTRICT  
MONTGOMERY COUNTY, MARYLAND

FILE NO: MB221005.00  
DATE: 12/29/22  
FIELD DATE: 12/16/22

**BOHLER** ENGINEERING, INC.  
12825 WORLDGATE DRIVE, SUITE 700  
HERNDON, VIRGINIA 20170  
703.709.9500  
www.bohlerengineering.com

CREW CHIEF: M.O.J.D. DRAWN: J.P. REVIEWED: L.F. APPROVED: J.B. SCALE: 1"=40' DWG. NO: 2 OF 2