



Gaithersburg
A Character Counts! City

City of Gaithersburg

LAND USE PLAN

A Master Plan Element

Published December 20, 2011

2009
MASTER PLAN

CITY OF GAITHERSBURG 2009 MASTER PLAN

LAND USE ELEMENT

Planning Commission Approval: 11/16/2011, Resolution PCR-1-11
Mayor and City Council Adoption: 12/19/2011, Resolution R-88-11

MAYOR AND CITY COUNCIL

Mayor Sidney A. Katz
Council Vice President Ryan Spiegel
Jud Ashman
Cathy C. Drzyzgula
Henry F. Marraffa, Jr.
Michael A. Sesma

PLANNING COMMISSION

Chair John Bauer
Vice-Chair Lloyd S. Kaufman
Commissioner Matthew Hopkins
Commissioner Geraldine Lanier
Commissioner Danielle L. Winborne
Alternate Commissioner Joseph Coratola

CITY MANAGER

Angel L. Jones

PLANNING AND CODE ADMINISTRATION

Raymond Robinson III, Lead, Long Range Planning
Kirk Eby, GIS Planner

CITY OF GAITHERSBURG 2009 MASTER PLAN

CHAPTER 1 LAND USE

TABLE OF CONTENTS

1.	Purpose and Need.....	1
2.	Introduction	1
2.1	Maryland State Planning Visions	2
2.2	Fiscal Year 2012 City Strategic Directions	3
3.	Land Use and Zoning Categories and Maps.....	6
3.1	Land Use Categories	6
3.2	Zoning Categories	12
4.	Map Designations.....	18
1.	Rosenthal Auto Dealership, 5 parcels, 11.4 acres	24
2.	Fitzgerald, King, & Sheehy Auto Dealerships, 5 parcels, 24.7 acres	26
3.	Watkins Mill Road houses, 3 parcels, 3.4 Acres.....	28
4.	Hechinger Property / Great Beginnings	30
5.	Travis Avenue vacant land, 5 parcels, 2.1 acres	32
6.	McGown Property, 7 parcels, 94.3 acres.....	33
7.	Metropolitan Grove east of Watkins Mill Town Center, 12 parcels, 50.7 acres.....	35
8.	Criswell / Motel 6 / Senior Center, 9 parcels, 14.1 acres	37
9.	Diamond Square, 4 parcels, 17.3 acres	39
10.	14 Firstfield Rd, 1 parcel, 4.6 acres	41
11.	Diamond Farm Office Condos, 2 parcels, 4.7 acres	43
12.	Quince Orchard Park – Meadows, 2 parcels, 22.3 acres	45
13.	Quince Orchard Park – CCT Station, 4 parcels, 11.7 acres	47
14.	Izaak Walton League, 2 parcels, 33.4 acres.....	49
15.	Johnson Property, 4 parcels, 23 acres	51
16.	Potomac Valley Shopping Center – City, 2 parcels, 7 acres	53
17.	Potomac Valley Shopping Center – County, 3 parcels, 4.7 acres.....	54
18.	Potomac Gardens Center, 1 parcel, 5.3 acres.....	55
19.	GE Technology Park – City Lot, 1 parcel, 7.4 acres	57
20.	Consumer Product Safety Commission (CPSC), 1 parcel, 9.5 acres.....	58
21.	Crown Farm, 8 parcels, 178.5 acres.....	60
22.	Rosedale & Casey Trust, 3 parcels, 17 acres	62
23.	The Great Indoors, 2 parcels, 13.8 acres.....	64
24.	Walnut Hill Shopping Center, 2 parcels, 8.3 acres	65
25.	Berlin’s Addition / Goodwill, 6 Parcels, 4.7 acres	67
26.	Londonderry, 9 parcels, 54.4 acres	69

27.	WSSC Property, 1 parcel, 8 acres	71
28.	Lilac Gardens / Summit Hall Apts, 2 parcels, 2.3 acres	73
29.	100 West Diamond Ave, 1 parcel, 0.4 acres	75
30.	Standard Supply / Meem Ave, 4 parcels, 4.6 acres	77
4.1	Frederick Avenue	79
31.	Wilson Property, 5 parcels, 2.6 acres.....	80
32.	South Summit Ave properties, 5 parcels, 2.6 acres	82
33.	Fairgrounds, 3 parcels, 64.8 acres.....	84
34.	Sam’s Club & Burlington Property, 3 parcels, 20 acres	86
35.	Lakeforest Mall, 8 parcels, 103.3 acres	88
36.	Guardian Realty / Lakeforest Office Park, 5 parcels, 15.7 acres	90
37.	Sports Authority / Odend’hal Ave commercial, 5 parcels, 7.5 acres.....	92
38.	Whetstone Apts / 400 Block N Frederick, 15 parcels, 15.9 acres	94
5.	Appendix A: Existing Land Use from 2003 Master Plan	96
6.	Appendix B: Location of Topics in the Master Plan.....	101

List of Tables

Table 1:	Summary of Map Designations	18
Table 2:	Subjects That Are Found in The Gaithersburg Master Plan.....	101

Index of Maps

Map 1: Gaithersburg Annexations by Decade	5
Map 2: 2009 Master Plan Land Use Map	7
Map 3: Existing Zoning Map	13
Map 4: Location of Map Designations	19
Map 5: 2003 Master Plan Land Use	96

1. Purpose and Need

The City of Gaithersburg is empowered, under Article 66B, *Land Use*, of the Annotated Code of Maryland, to exercise autonomous planning and zoning powers. Article 66B establishes the requirements of a municipal comprehensive master plan and its required elements, and the procedures for approving said master plan. Codified in Article 66B, Section 3.05(a)(4)(ii) requires the development of a Land Use Element as part of the City's comprehensive master plan. This element describes and makes recommendations for general land use and zoning categories for identified properties. The recommended land uses and zoning proposed are intended to be the most appropriate and desirable for both public and private land while being consistent with the State and City visions laid forth in the City's *2009 Process and Overview Element*.

A Master Plan Element, this plan is an update of the *2003 City of Gaithersburg Land Use Plan*. The 2009 Land Use Element will serve as an informational and policy document to the Mayor and City Council, the Planning Commission, other boards and committees of the City, and the residents of Gaithersburg. This element will also identify the needs of, and provide recommendations for those issues related to the proposed land uses and zoning, such as transportation or policy changes. Ultimately, this Element will support the visions, policies, and principles of the City, as well as the other Master Plan Elements.

2. Introduction

Under Maryland's "Smart, Green & Growing legislative package," adopted in 2009, the City of Gaithersburg is required to incorporate twelve specific visions that will direct the goals of the Master Plan and help develop and implement a sound growth and development policy. The State's visions are actualized through the City of Gaithersburg's commitment to fulfill each vision and will be achieved in the Master Plan through the incorporation of specific guiding strategies based upon the City's adopted Strategic Directions.

As stated in the adopted *Municipal Growth Element*, the overall vision for future City growth will retain the goal of providing for diversity in demographics, economics, and housing types, while addressing the need to increase employment opportunities in this ever-growing region. Future development in the City will be centered around infill redevelopment opportunities and through annexations.

The long-term developments within the City will comply with the City's Adequate Public Facilities Ordinance, Environmental Standards, Green Building Design Criteria, and Storm Water Management regulations. This growth and development will occur in such a way that assures the protection of the City's historic, architectural and cultural resources as defined in the adopted *Historic Preservation Element*.

Recommendations for 2009 Map Designations are based upon the conditions, projections and assumptions about what future populations and conditions would be and reflect the goals and objectives of the City at that time. Unless identified under this current element for a new

recommendation, the recommendations for an area made under previous adopted master plans carry forward. The Land Use Plan is intended to be an ongoing or "living document" where the plan is continually expanded and changed to respond to updated demographic projections, market conditions, housing assumptions and to changes in the goals and objectives of the City.

2.1 Maryland State Planning Visions

State Vision 1:

Quality of life and sustainability: a high quality of life is achieved through universal stewardship of the land, water, and air resulting in sustainable communities and protection of the environment

State Vision 2:

Public participation: citizens are active partners in the planning and implementation of community initiatives and are sensitive to their responsibilities in achieving community goals

State Vision 3:

Growth areas: growth is concentrated in existing population and business centers, growth areas adjacent to these centers, or strategically selected new centers

State Vision 4:

Community design: compact, mixed-use, walkable design consistent with existing community character, located near available or planned transit options is encouraged to ensure efficient use of land and transportation resources and preservation and enhancement of natural systems, open spaces, recreational areas, and historical, cultural, and archeological resources

State Vision 5:

Infrastructure: growth areas have the water resources and infrastructure to accommodate population and business expansion in an orderly, efficient, and environmentally sustainable manner.

State Vision 6:

Transportation: a well-maintained, multimodal transportation system facilitates the safe, convenient, affordable, and efficient movement of people, goods, and services within and between population and business centers

State Vision 7:

Housing: a range of housing densities, types, and sizes provides residential options for citizens of all ages and incomes

State Vision 8:

Economic development: economic development and natural resource-based businesses that promote employment opportunities for all income levels within the capacity of the state's natural resources, public services, and public facilities are encouraged;

State Vision 9:

Environmental protection: land and water resources, including the Chesapeake and coastal bays, are carefully managed to restore and maintain healthy air and water, natural systems, and living resources

State Vision 10:

Resource conservation: waterways, forests, agricultural areas, open space, natural systems, and scenic areas are conserved

State Vision 11:

Stewardship: government, business entities, and residents are responsible for the creation of sustainable communities by collaborating to balance efficient growth with resource protection

State Vision 12:

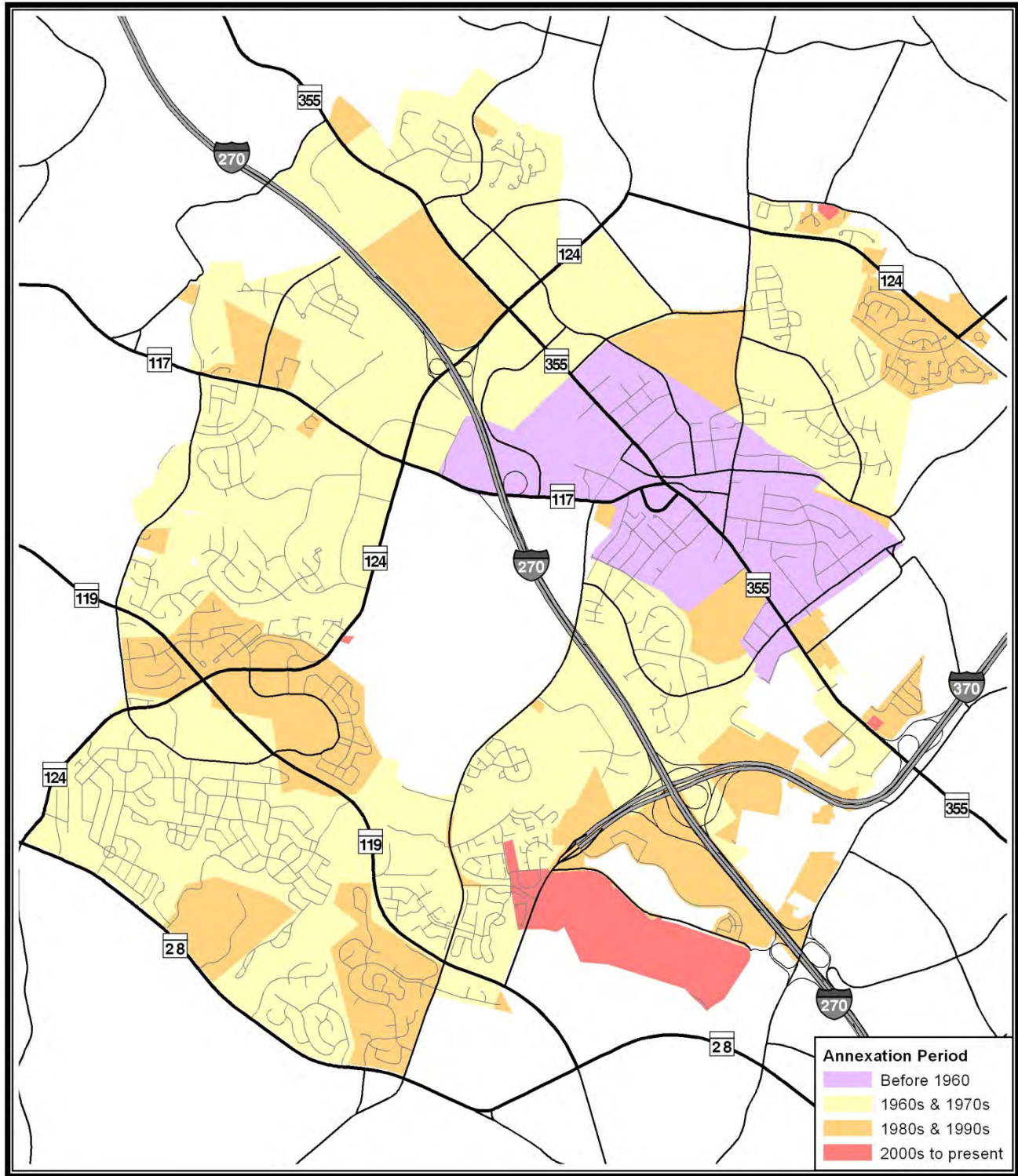
Implementation: strategies, policies, programs, and funding for growth and development, resource conservation, infrastructure, and transportation are integrated across the local, regional, state, and interstate levels to achieve these visions

2.2 Fiscal Year 2012 City Strategic Directions

1. Ensure that all planning and development considers and responds to the City's environmental, transportation, economic, social, and civic needs. **(Planning)**
2. Improve ease of travel in Gaithersburg by implementing traffic and transportation planning and management strategies that address safety, structure and function of streets, transit, bikeways, and sidewalks. **(Transportation)**
3. Actively pursue economic and business development programs and strategies. **(Economic)**
4. Maintain and enhance priority City services. **(Services)**
5. Implement programs that improve current housing stock and pursue development and redevelopment opportunities that provide an appropriate mix of housing types in inclusive communities. **(Housing)**
6. Maintain Support of Neighborhood Community Public Safety Programs. **(Safety)**

7. Provide quality parks, diverse cultural, artistic, and recreational opportunities for all ages and interests. **(Parks)**
8. Meet the environmental, social and economic needs of the City without compromising future generations' ability to meet these same needs. **(Environment)**
9. Ensure effective and consistent communication activities and implement programs that promote and enhance citizen involvement. **(Communication)**
10. Maintain and improve the City's existing infrastructure and invest in new facilities, roadways, and real property assets. **(Infrastructure)**
11. Identify needs and collaborate on service provision to strengthen and enhance the quality of life for all City residents. **(Quality of Life)**

Map 1: Gaithersburg Annexations by Decade



3. Land Use and Zoning Categories and Maps

3.1 Land Use Categories

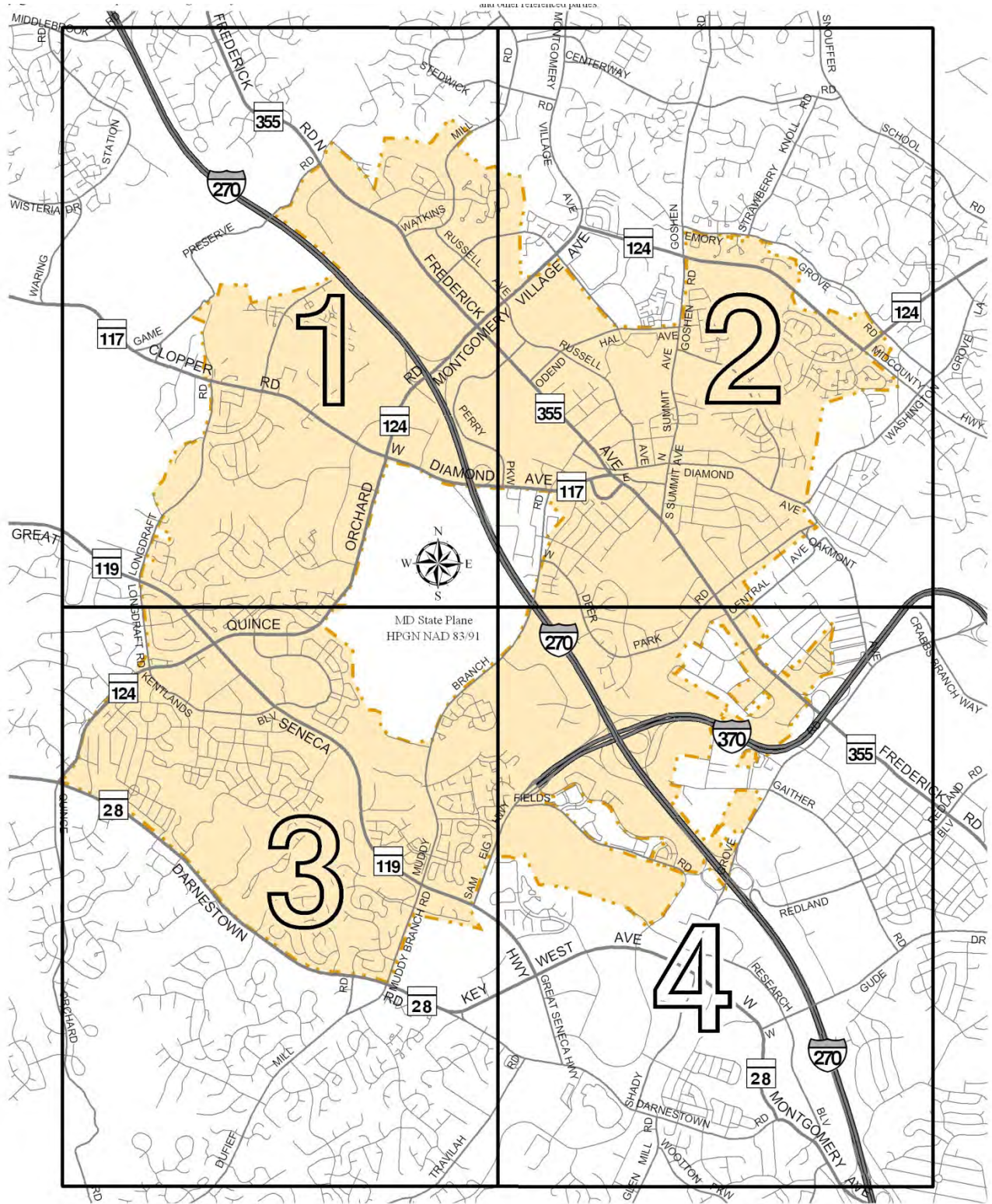
This Gaithersburg Master Plan Land Use section contains a variety of land use designations to describe and establish current and intended land uses in different areas of the City. The land use designations contained in this Master Plan are described below.

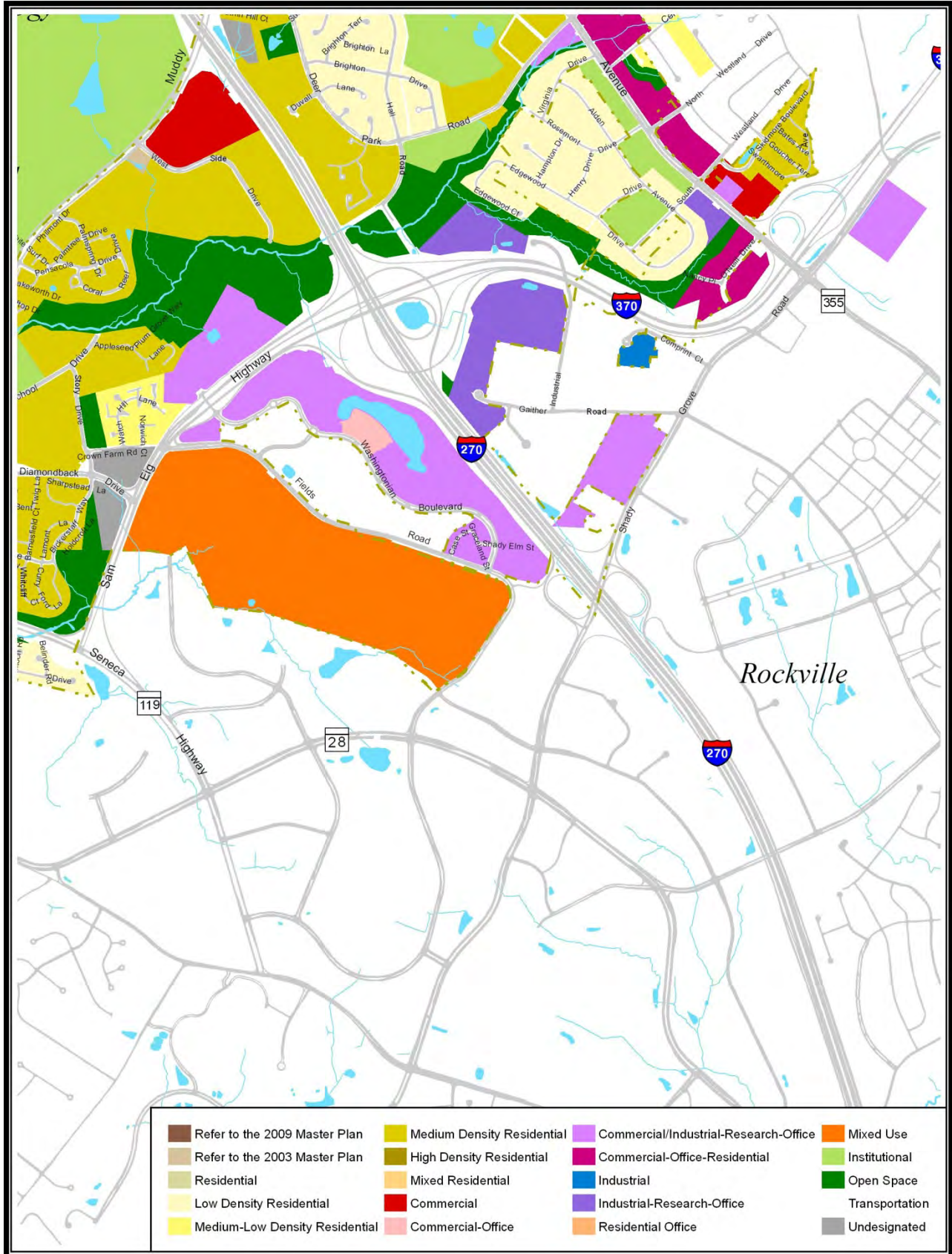
Land Use Categories

- Low Density Residential
- Medium-Low Density Residential
- Medium Density Residential
- High Density Residential
- Mixed Residential
- Residential
- Residential Office
- Mixed Use
- Commercial-Office-Residential
- Commercial
- Commercial-Office
- Commercial/Industrial-Research-Office
- Industrial
- Industrial-Research-Office
- Institutional
- Open Space
- Transportation

Please note that the following City-wide maps reflect the land use recommendations of the most recent master plan, site development plan, or annexation agreement. The maps may contain “undesigned” land use for properties that have been recently annexed into the City of Gaithersburg and do not have an adopted land use designation. Additionally, the maps will indicate “refer to master plan” for those properties that have more than one recommended land use designation (scenarios) in the Master Plan.

Map 2: 2009 Master Plan Land Use Map

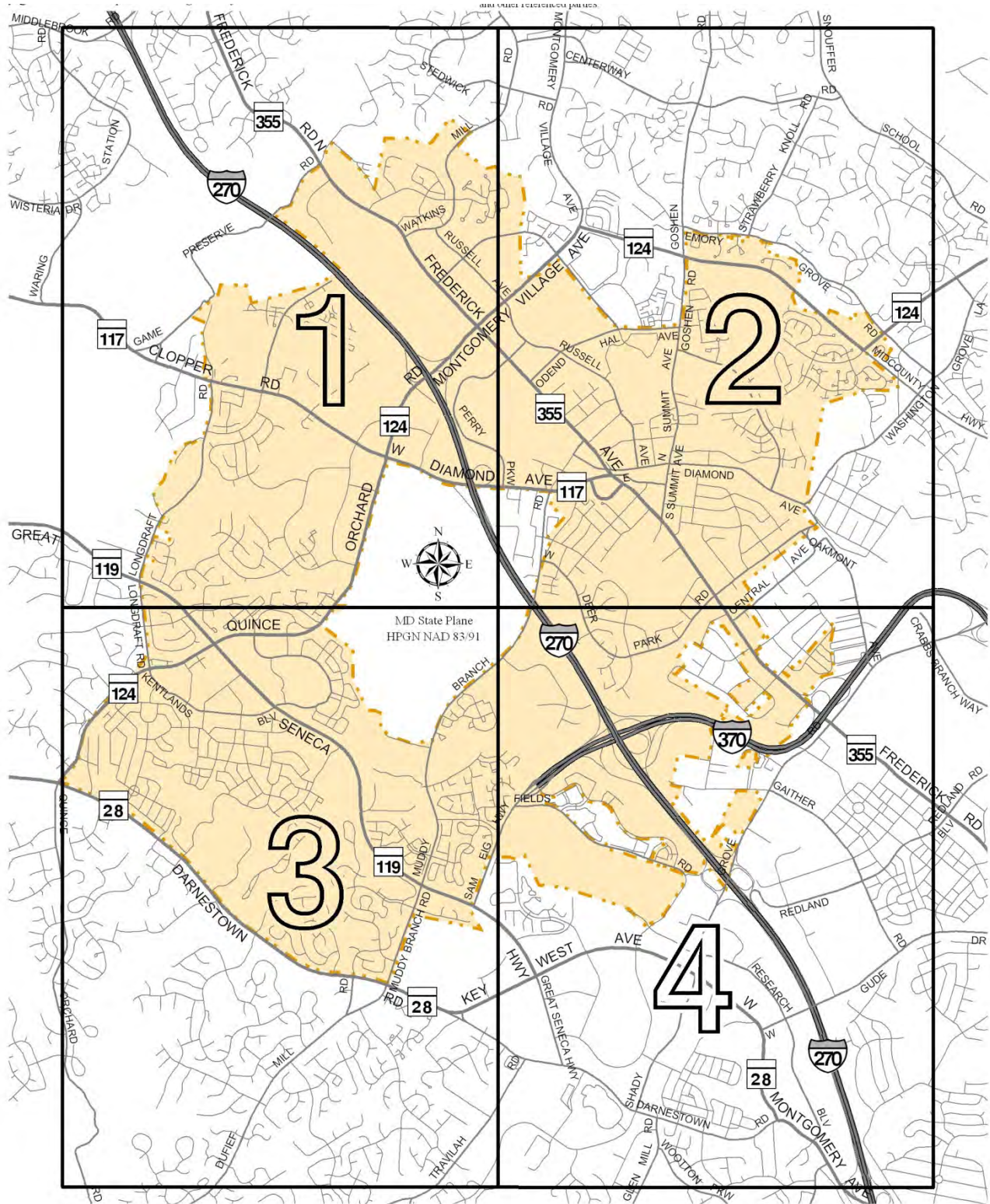




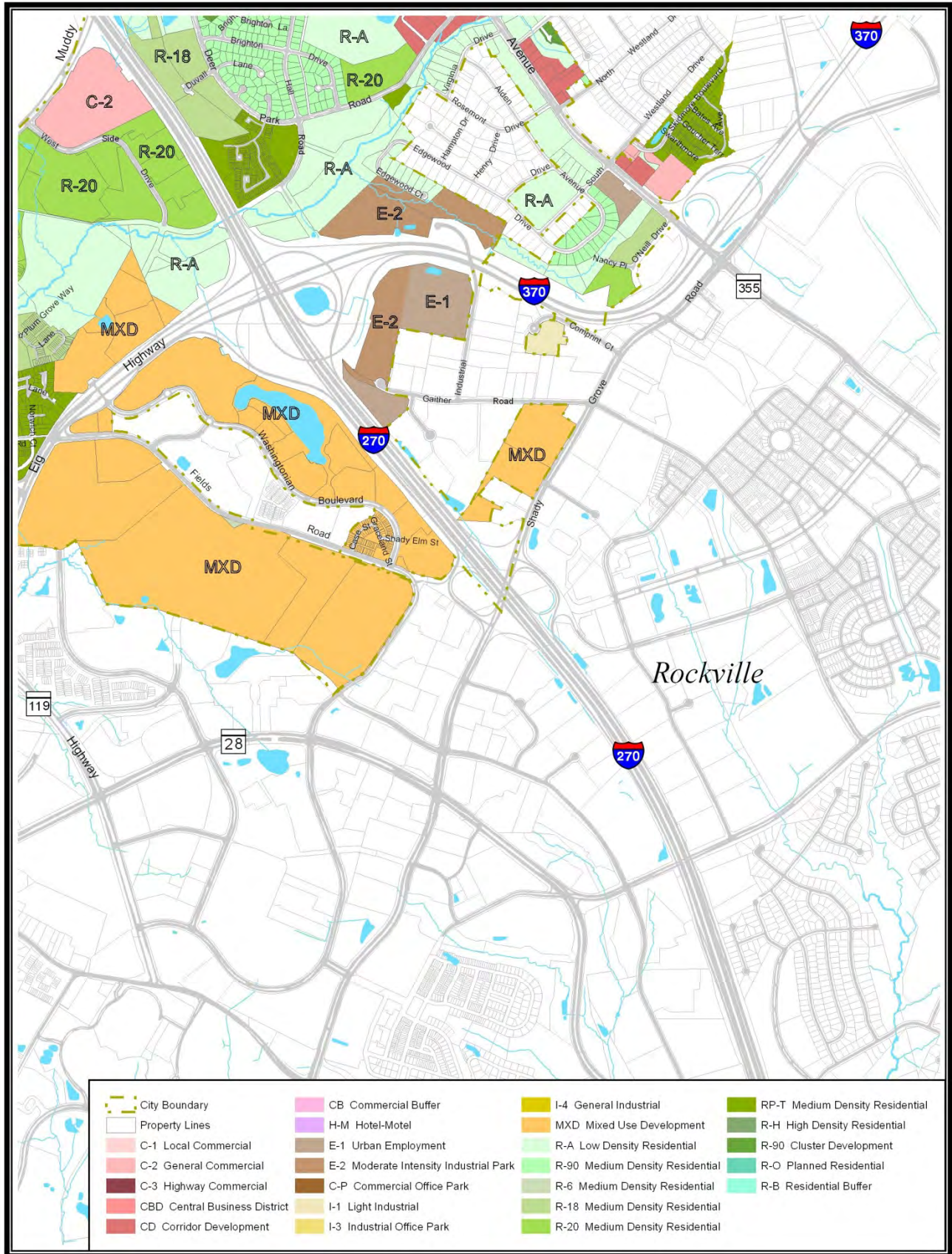
3.2 Zoning Categories

R-A	Low Density Residential (20,000 sq.ft. minimum land per unit)
R-B	Residential Buffer
R-90	Medium Density Residential (3 units /acre maximum)
R-90C	Cluster Development (3.5 units/acre maximum)
R-6	Medium Density Residential (6 units/acre maximum)
RP-T	Medium Density Residential (9 units/acre maximum)
R-18	Medium Density Residential (18 units/acre maximum)
R-20	Medium Density Residential (21.5 units/acre maximum)
R-H	High Density Residential (54 units/acre maximum)
MXD	Mixed Use Development
R-O	Planned Residential
CBD	Central Business District
CD	Corridor Development
C-B	Commercial Buffer
C-1	Local Commercial
C-2	General Commercial
C-3	Highway Commercial
C-P	Commercial Office Park
H-M	Hotel-Motel
E-1	Urban Employment
E-2	Moderate Intensity Industrial Park
I-1	Light Industrial
I-3	Industrial and Office Park
I-4	General Industrial

Map 3: Existing Zoning Map¹



¹ The zoning maps depicted on the following pages are effective as of March 24, 2011

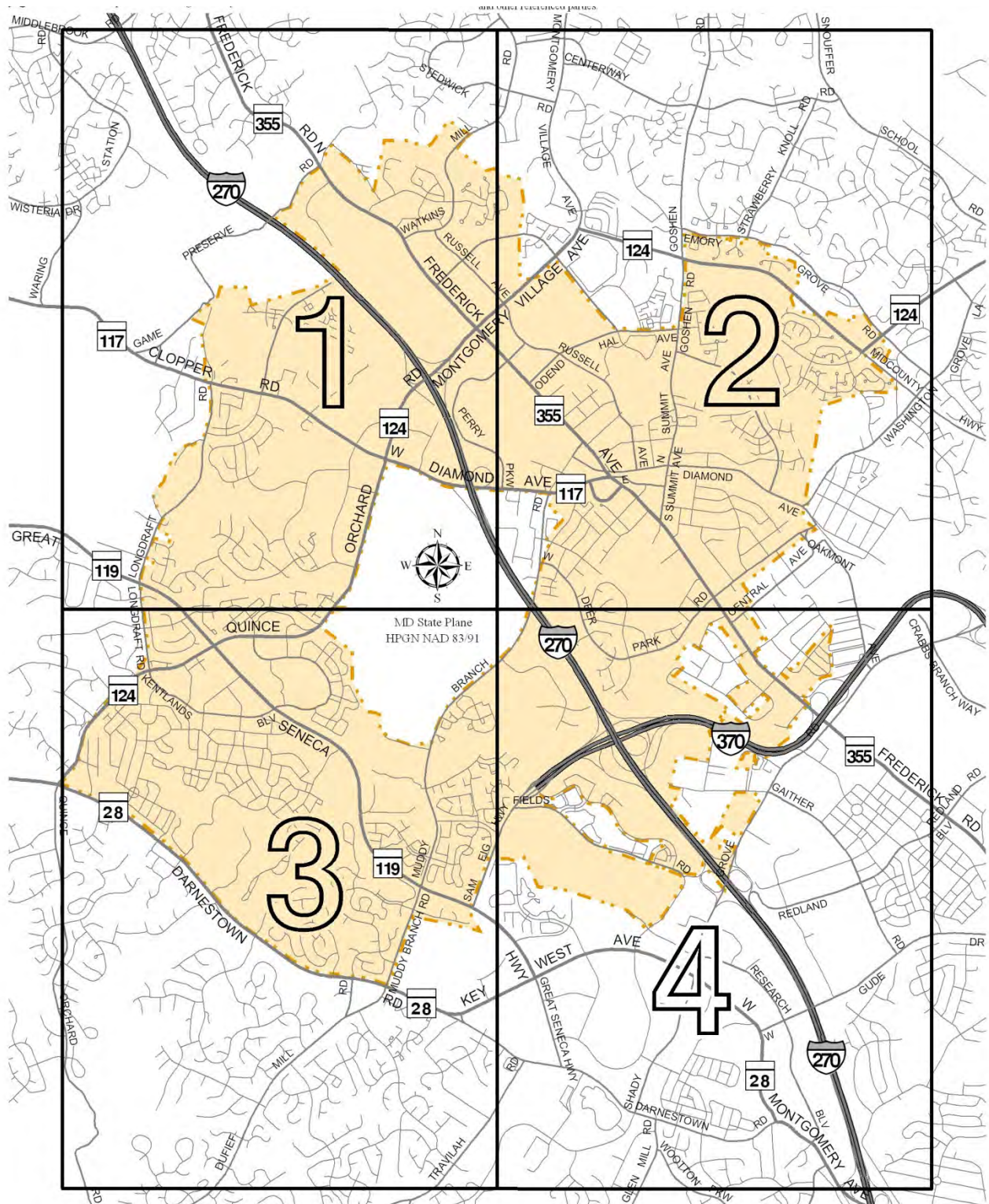


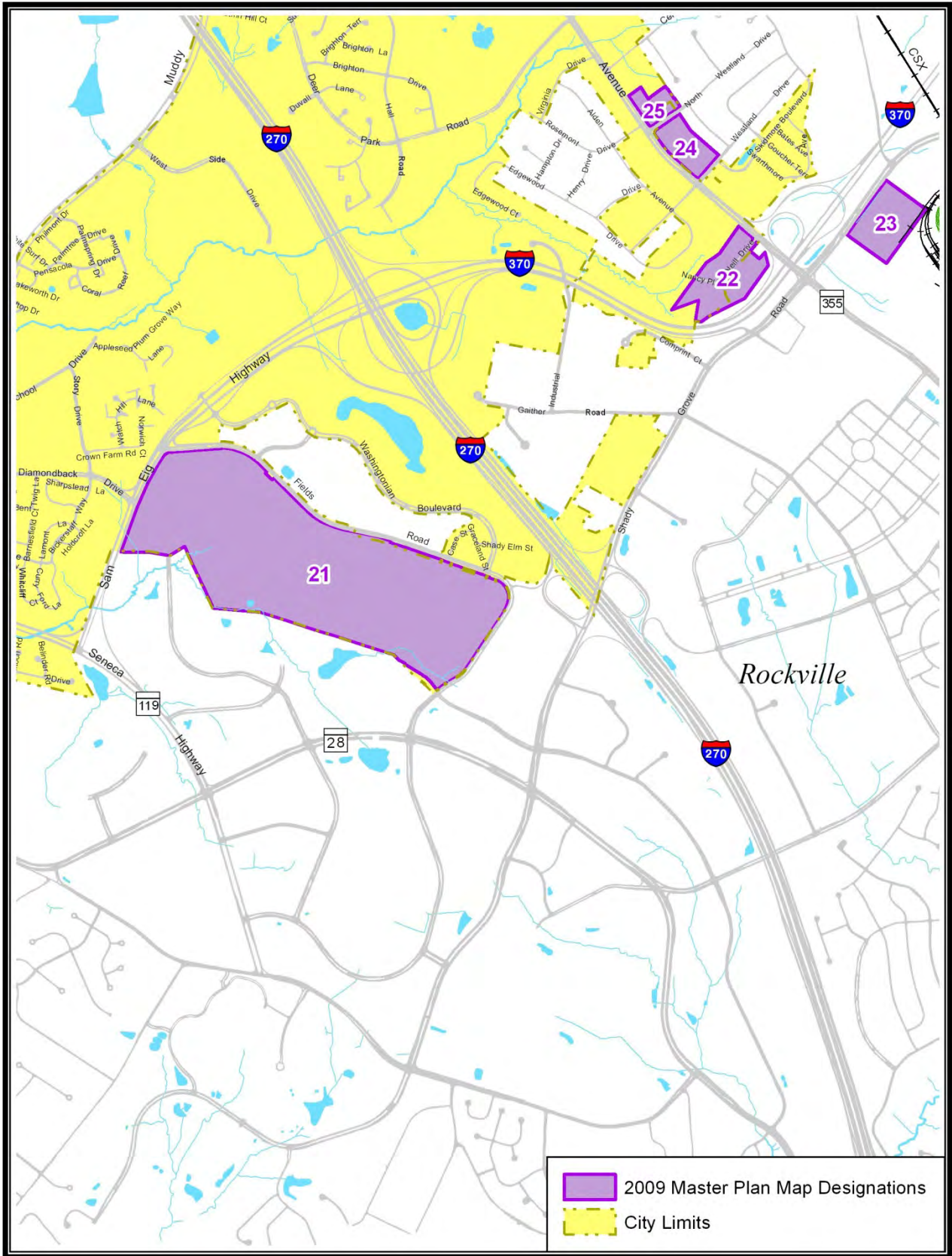
4. Map Designations

Table 1: Summary of Map Designations

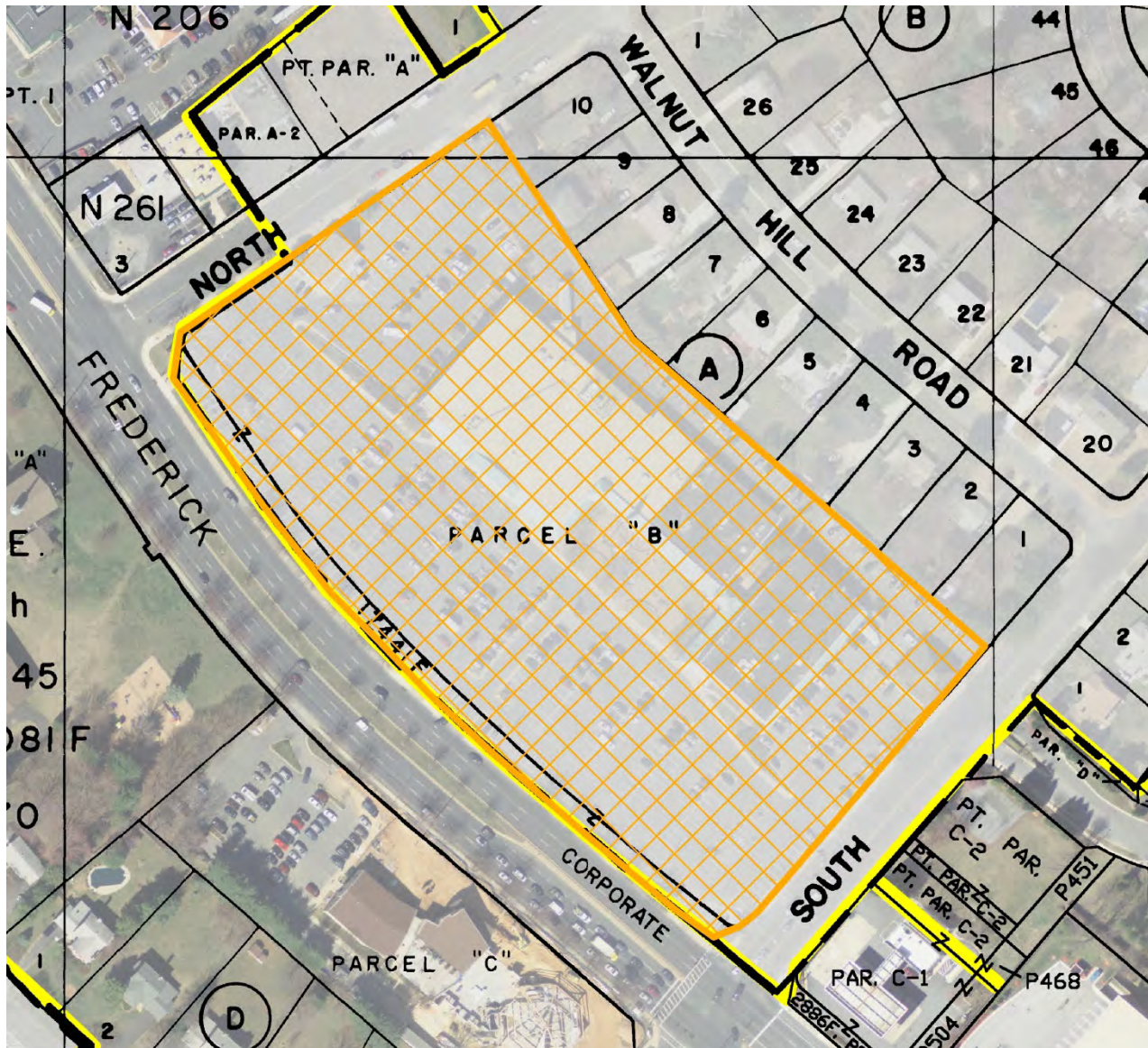
Map Designation	Acreage	Number of Parcels	Description
1	11.4	5	Rosenthal Auto Dealership
2	24.7	5	Fitzgerald, King, & Sheehy Auto Dealerships
3	3.4	3	Watkins Mill Road houses
4	8.8	1	Hechinger Property / Great Beginnings
5	2.1	5	Travis Avenue vacant land
6	94.3	7	McGown Property
7	50.7	12	Metropolitan Grove east of Watkins Mill Town Center
8	14.1	9	Criswell / Motel 6 / Senior Center
9	17.3	4	Diamond Square
10	4.6	1	14 Firstfield Rd
11	4.7	2	Diamond Farm Office Condos
12	22.3	2	Quince Orchard Park - Meadows
13	11.7	4	Quince Orchard Park - CCT Station
14	33.4	2	Izaak Walton League
15	23	4	Johnson Property
16	7	2	Potomac Valley Shopping Center - City
17	4.7	3	Potomac Valley Shopping Center - County
18	5.3	1	Potomac Gardens Center
19	7.4	1	GE Technology Park - City Lot
20	9.5	1	Consumer Product Safety Commission (CPSC)
21	178.5	8	Crown Farm
22	17	3	Rosedale & Casey Trust
23	13.8	2	The Great Indoors
24	8.3	2	Walnut Hill Shopping Center
25	4.7	6	Berlin's Addition / Goodwill
26	54.4	9	Londonderry
27	8	1	WSSC Property
28	2.3	2	Lilac Gardens / Summit Hall Apts
29	0.4	1	100 West Diamond Ave
30	4.6	4	Standard Supply / Meem Ave
31	2.6	5	Wilson Property
32	2.6	5	South Summit Ave properties
33	64.8	3	Fairgrounds
34	20	3	Sam's Club & Burlington Property
35	103.3	8	Lakeforest Mall
36	15.7	5	Guardian Realty / Lakeforest Office Park
37	7.5	5	Sports Authority/Odend'hal Ave commercial
38	15.9	15	Whetstone Apts / 400 Block N Frederick

Map 4: Location of Map Designations





24. Walnut Hill Shopping Center, 2 parcels, 8.3 acres



Parcel B Block A Walnut Hill and the residual Frederick Avenue right-of-way

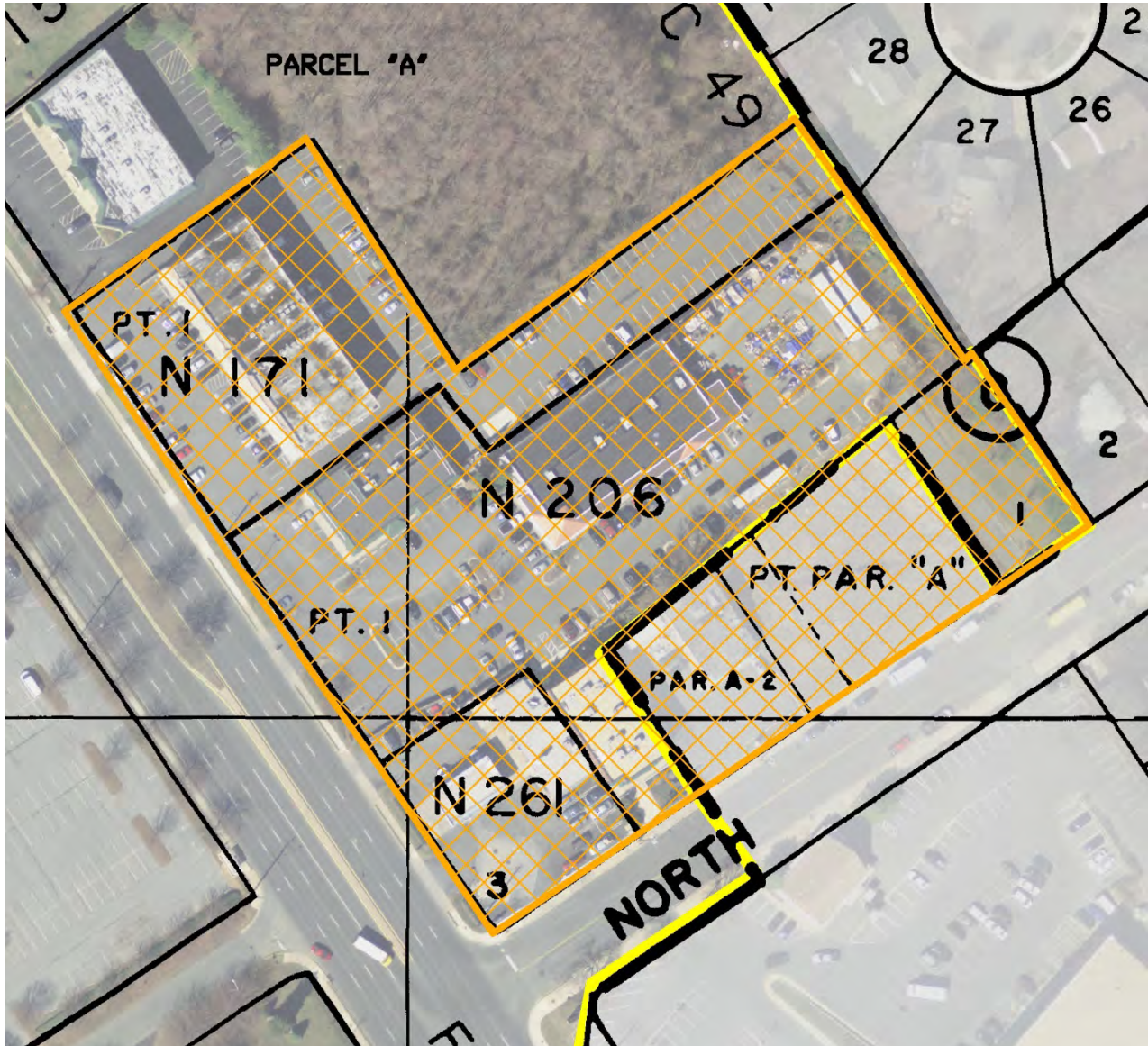
This 8.3-acre area contains a large one to two story retail building with a large surface parking lot. The residual Frederick Avenue right-of-way is located within the City limits, while Parcel B is located within the City's Maximum Expansion Limits, is contiguous with the City's current boundary, and could be annexed without creating an enclave. These properties are currently surrounded by a mix of single-family detached houses, religious institutions, and commercial uses.

The residual Frederick Avenue right-of-way does not currently have a zoning category assigned to it because at the time of annexation, this area was actual right-of-way. After the State abandoned this 20' wide portion of the Frederick Avenue right-of-way, the City did not assign a zoning category to this area. If annexed, this parcel should be incorporated into the Frederick Avenue Corridor Plan and subject to its design elements.

Applicable Strategic Direction: Planning, Economic**Land Use and Zoning Actions:**

- Adopt Commercial-Office-Residential land use designation for the residual Frederick Avenue right-of-way
- Adopt Commercial-Office-Residential land use designation for Parcel B, if annexed
- Recommend CD Zoning for the residual Frederick Avenue right-of-way
- Recommend CD Zoning for Parcel B, if annexed

25. Berlin's Addition / Goodwill, 6 Parcels, 4.7 acres



Part of Lot 1 Berlin's Addition, Lot 1 Block G Walnut Hills, and part of Lot 1, Lot 3, Parcel A-2, part of Parcel A Walnut Hill

This 4.7-acre area contains several one to two story retail buildings with large surface parking lots. Parcel A-2 and part of Parcel A Walnut Hill are within the City's Maximum Expansion Limits, are contiguous with the City's current boundary, and could be annexed without creating an enclave. These properties are currently surrounded by a mix of single-family detached houses, religious institutions, and commercial uses.

This area's location along the Frederick Avenue corridor makes it appropriate for redevelopment in the future. As part of the Southern Residential District of the Frederick Avenue Corridor, a mixed use project with a balanced mix of commercial/office and residential would be appropriate. Consolidation of the smaller lots with the larger lots is encouraged. Any

redevelopment proposal should consider and relate to the residential character of the surrounding area.

Applicable Strategic Direction: Planning

Land Use and Zoning Actions:

- Adopt Commercial-Office-Residential land use designation for Part of Lot 1 Berlin's Addition, Lot 1 Block G Walnut Hills, and part of Lot 1 and Lot 3, Walnut Hill
- Adopt Commercial-Office-Residential land use designation for Parcel A-2 and part of Parcel A Walnut Hill, if annexed
- Zoning remains CD for Part of Lot 1 Berlin's Addition and part of Lot 1 and Lot 3 Walnut Hill
- Recommend zoning change from R-90 to CD for Lot 1 Block G Walnut Hills
- Recommend CD zoning for Parcel A-2 and part of Parcel A Walnut Hill, if annexed