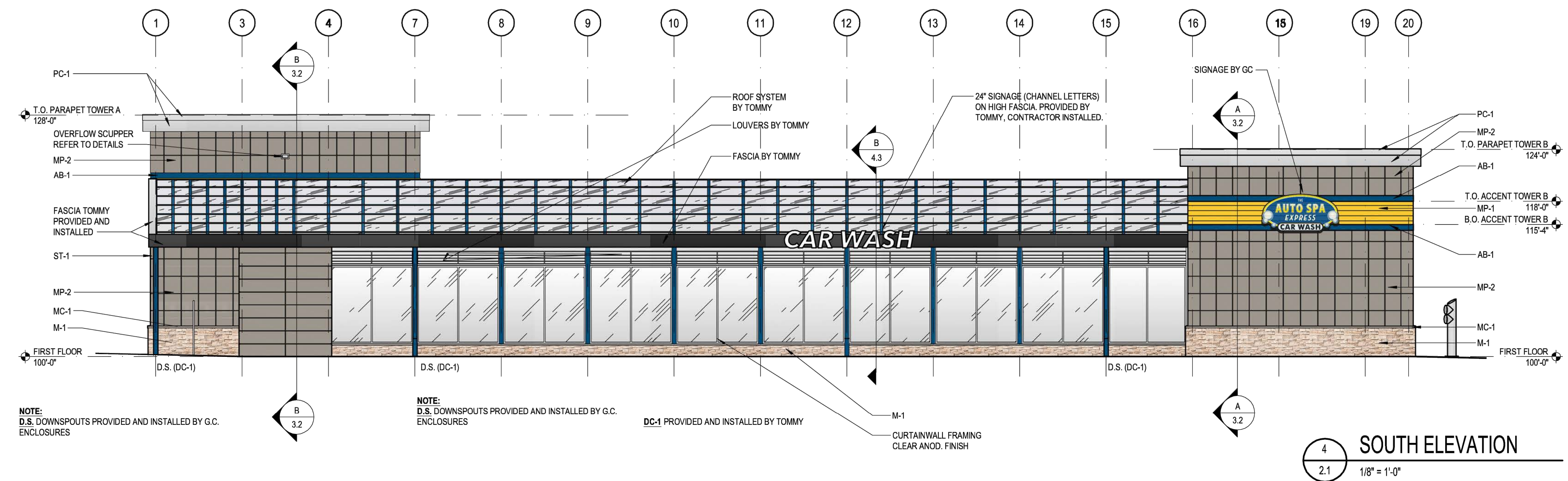
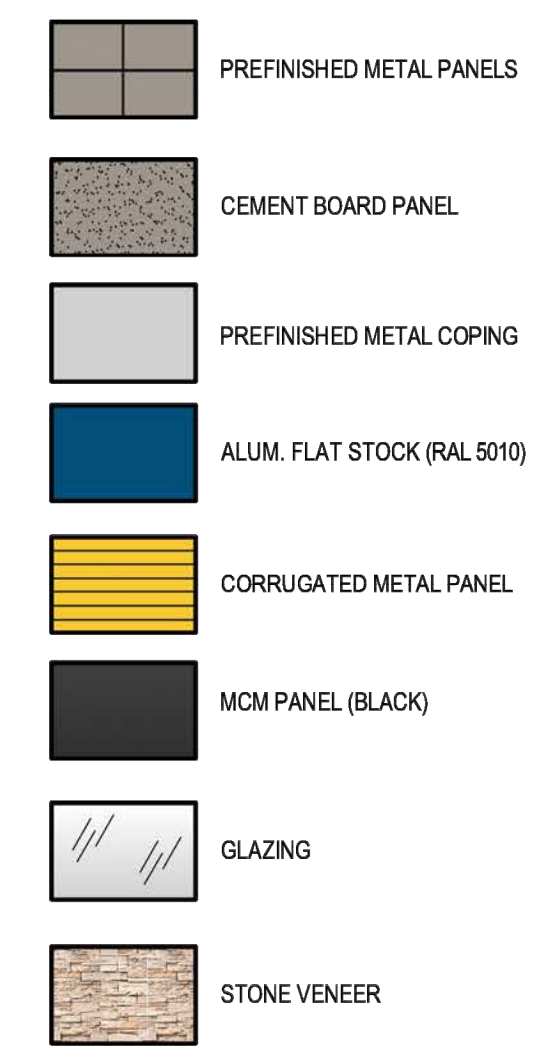


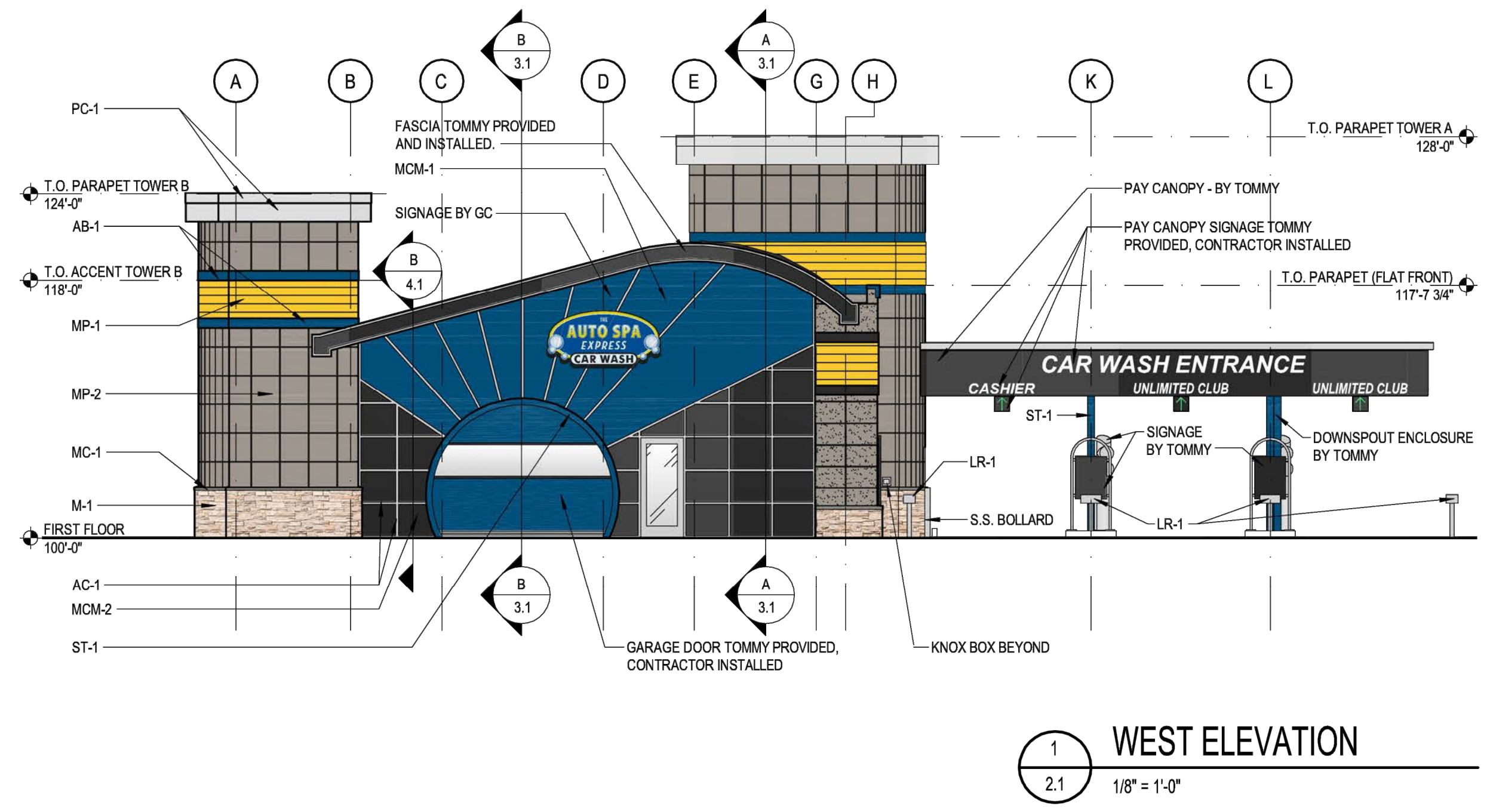
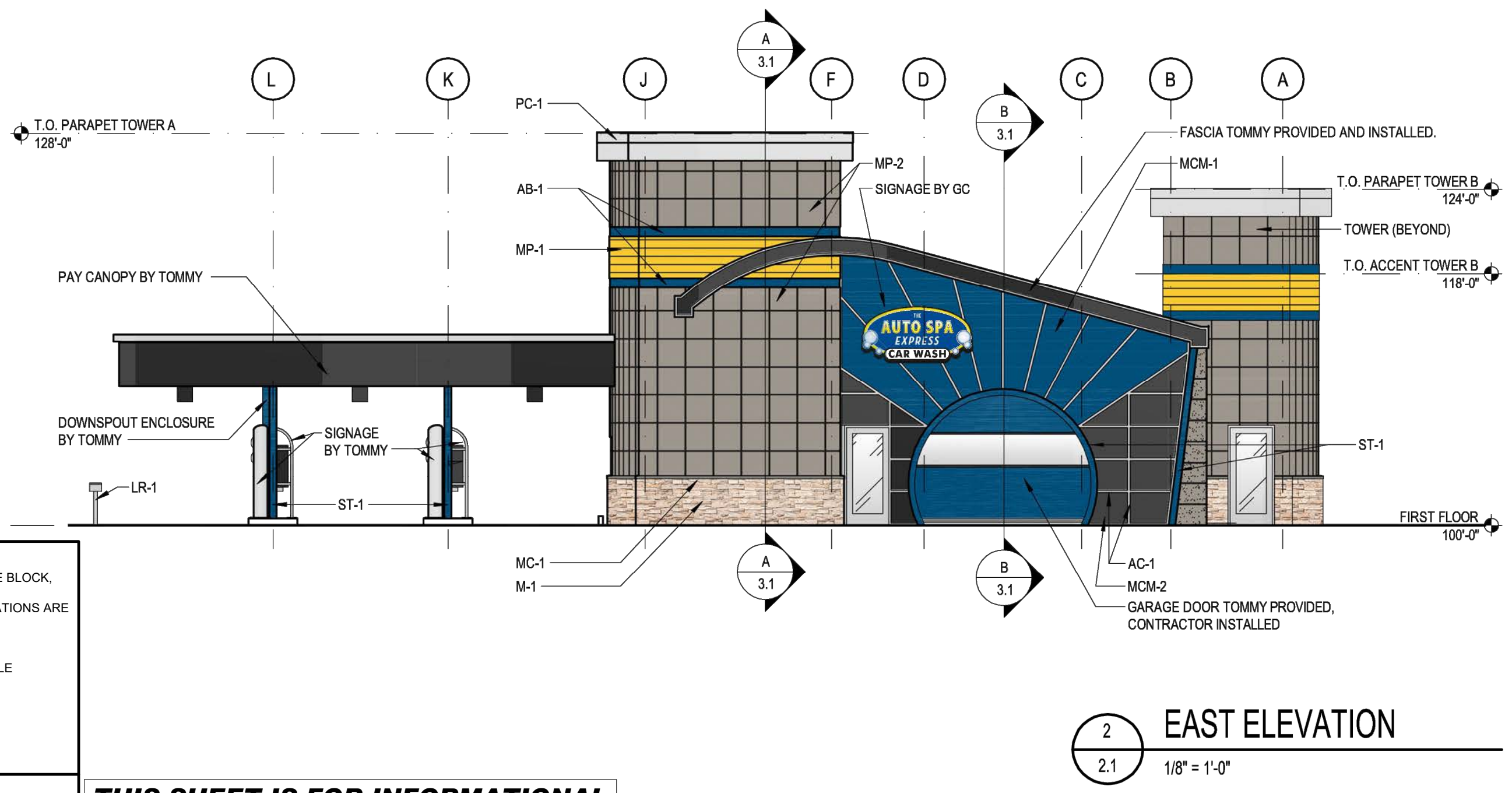
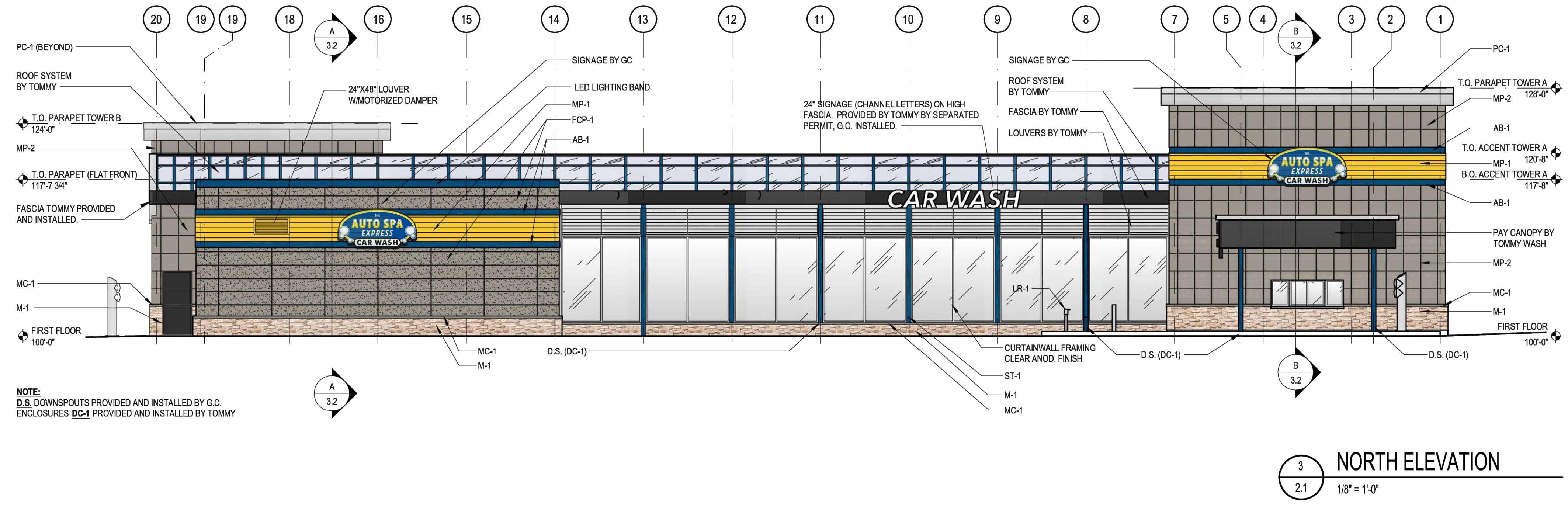
EXTERIOR MATERIALS LEGEND



EXTERIOR MATERIALS SPECS

TAG	MATERIAL	MFR.	DESCRIPTION	COLOR
ST-1	STRUCTURAL STEEL	R.B.I.		RAL 5010
MP-1	PROFILED ALUMINUM METAL PANEL	ATAS	ATAS 7.2 BWR360 BELVEDERE	RAL 1018
MP-2	PREFINISHED METAL PANEL	DRI-DESIGN	30"x30" PANEL SIZE	CADET GREY
AB-1	PREFIN. ALUM. ACCENT BANDING	ATAS	ATAS FLAT SHEET	RAL 5010
PC-1	PREFIN. ALUM. PARAPET CORNICE	REYNOLUX		BRIGHT SILVER METALLIC
M-1	STONE VENEER	BORAL	PRO-FIT LEDGESTONE	SOUTHWEST BLEND
MC-1	PRECAST STONE SILL	ELDORADO	CHISELED EDGE WALL CAP	SMOKE
FCP-1	ARCHITECTURAL BLOCK	NICHHA	FIBER CEMENT PANELS 18" H x 72" W	GRAY
MCM-1	PREFIN. ALUM. COMPOSITE PANELS	LAMINATORS	LAMINATORS OMEGA SERIES	RAL 5010
MCM-2	PREFIN. ALUM. COMPOSITE PANELS	CITADEL	GLAZE GUARD (SERIES F)	EBONY
AC-1	PREFIN. ALUM. CLOSURE CAPS	TUBELITE	TUBELITE 200 SERIES CURTAINWALL	CLEAR ANNOXIDIZED
SF01	INSULATED GLASS		1" INSULATED GLASS LOW-E	CLEAR
SF02				
SF03				
SF04	METAL PANEL INFILL		1" MCM PANEL INFILL	BLACK
DC-1	PREFINISHED ALUMINUM	TOMMY	DOWNSPOUT COVER	RAL 5010
LR-1	LICENSE PLATE READER	TOMMY	BOLLARD	STAINLESS STEEL

NOTE: GENERAL CONTRACTOR TO SUPPLY ALL MATERIALS/EQUIPMENT EXCEPT ST-1, DC-1 & LR-1 TO BE SUPPLIED BY TOMMY.



CITY OF GAITHERSBURG MAYOR & COUNCIL
10009 FIELDS ROAD GAITHERSBURG, MD 20878

SCHEMATIC DEVELOPMENT PLAN APPROVAL

AT THE REGULARLY SCHEDULED MEETING OF THE MAYOR AND CITY COUNCIL HELD ON _____

APPLICATION NO. SDP-XXXX-2024 WAS GRANTED

SCHEMATIC DEVELOPMENT PLAN APPROVAL BY RESOLUTION _____ WITH _____ CONDITIONS.

DATE _____ BY _____

NOTE: ANY REVISIONS TO SIGNED PLANS MUST BE APPROVED BY THE MAYOR & CITY COUNCIL

NOTES REGARDING DETAILS BY OTHERS:

1. DETAILS PREPARED BY OTHERS ARE IDENTIFIED AS SUCH BY WAY OF A TITLE BLOCK, REFERENCE, LOGO, OR OTHER NOTATION.
2. WHERE AN ORIGINAL DETAIL BY OTHERS HAS BEEN MODIFIED, THE MODIFICATIONS ARE IDENTIFIED BY REVISION CLOUDS.
3. REFER TO OUTSIDE SOURCE NOTES ON SHEET C-102.
4. WHEN THE SOURCE OF THE DETAIL IS A REVIEWING/REGULATORY AGENCY, FABRICATION AND INSTALLATION SHALL BE IN ACCORDANCE WITH APPLICABLE REQUIREMENTS AND SPECIFICATIONS.
5. WHEN APPROPRIATE, SHOP DRAWINGS SHALL BE FORWARDED TO THE REVIEWING/REGULATORY AGENCY PRIOR TO FABRICATION.

DETAILS BY OTHERS DISCLAIMER

THIS SHEET IS FOR INFORMATIONAL PURPOSES ONLY.

PROFESSIONAL CERTIFICATION:
I CERTIFY THAT THESE DOCUMENTS WERE PREPARED OR APPROVED BY ME, & THAT I AM A DULY LICENSED ARCHITECT UNDER THE LAWS OF THE STATE OF MARYLAND, LICENSE #12116, EXPIRATION DATE 4-29-25.

A+A Project #240210
New Car Wash Facility
AUTO SPA EXPRESS #36
10009 Fields Road
Gaithersburg, Maryland 20878

NO.	REVISION	DATE

TOMMY'S #:
DATE: 6-20-24
DRAWN BY: SD
DRAWING TITLE:
EXTERIOR ELEVATIONS

A2.1
COPYRIGHT 2024