

MARYLAND COORDINATE SYSTEM
NAD 83 / NGVD 29

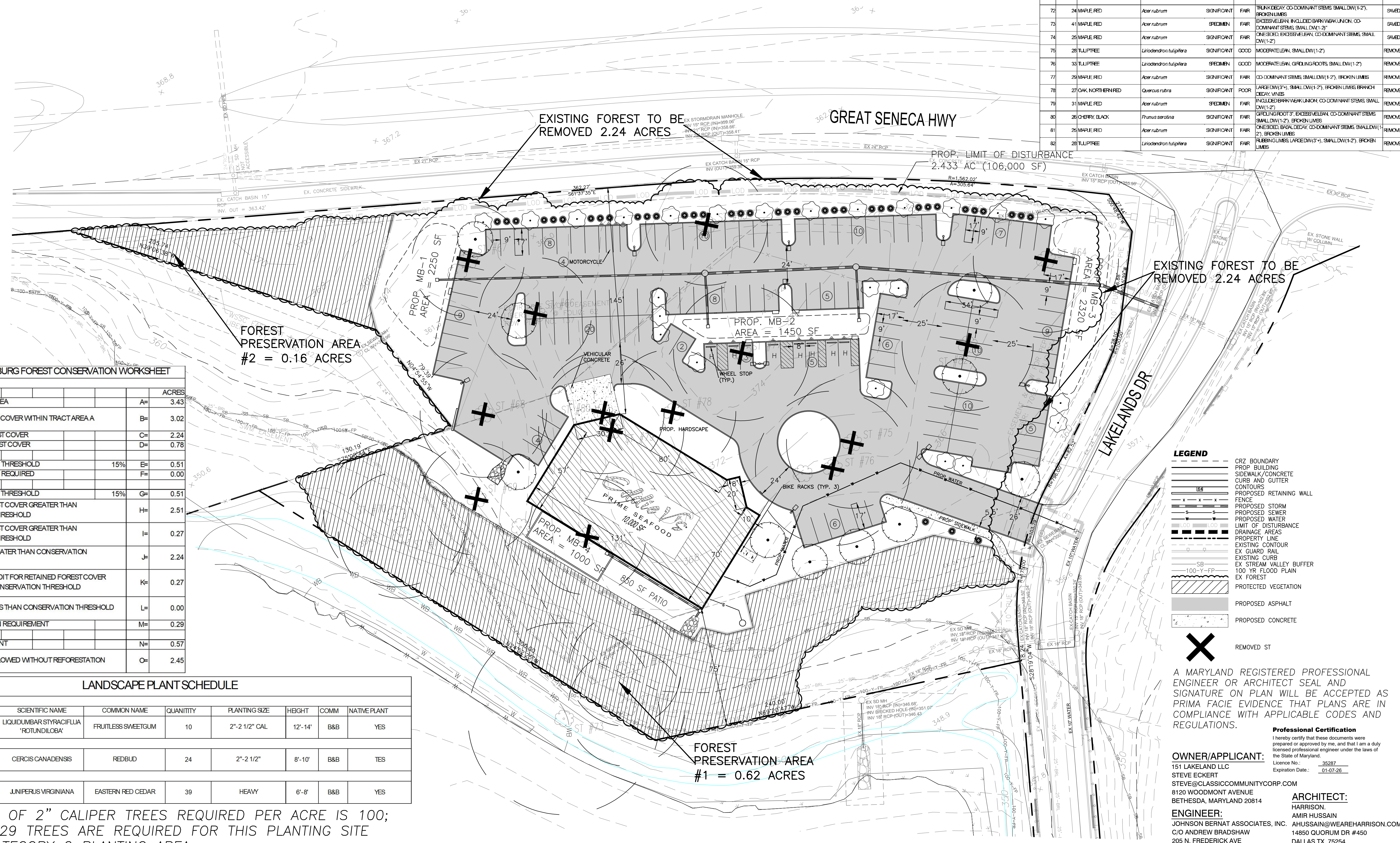
CITY OF GAITHERSBURG FOREST CONSERVATION WORKSHEET

NET TRACT AREA		ACRES
A. TOTAL TRACT AREA	A=	3.43
B. EXISTING FOREST COVER WITHIN TRACT AREA A	B=	3.02
C. CLEARED FOREST COVER	C=	2.24
D. RETAINED FOREST COVER	D=	0.78
AFFORESTATION		
E. AFFORESTATION THRESHOLD	E=	0.51
F. AFFORESTATION REQUIRED	F=	0.00
REFORESTATION		
G. CONSERVATION THRESHOLD	G=	0.51
H. EXISTING FOREST COVER GREATER THAN CONSERVATION THRESHOLD	H=	2.51
I. RETAINED FOREST COVER GREATER THAN CONSERVATION THRESHOLD	I=	0.27
J. CLEARANCE GREATER THAN CONSERVATION THRESHOLD	J=	2.24
K. RETENTION CREDIT FOR RETAINED FOREST COVER GREATER THAN CONSERVATION THRESHOLD	K=	0.27
L. CLEARANCE LESS THAN CONSERVATION THRESHOLD	L=	0.00
M. REFORESTATION REQUIREMENT	M=	0.29
BREAK-EVEN POINT		
N. BREAK-EVEN POINT	N=	0.57
O. CLEARANCE ALLOWED WITHOUT REFORESTATION	O=	2.45

LANDSCAPE PLANT SCHEDULE

SHADE TREES							
SYMBOL	CODE NAME	SCIENTIFIC NAME	COMMON NAME	QUANTITY	PLANTING SIZE	HEIGHT	NATIVE PLANT
○	LS	LIQUIDUMBAR STYRACIFLUA "ROTUNDILOBA"	FRUITLESS SWEETGUM	10	2"-2 1/2" CAL	12'-14'	YES
ORNAMENTAL TREES							
○	CC	CERCIS CANADENSIS	REDBUD	24	2"-2 1/2"	8'-10'	YES
EVERGREEN TREES							
⊙	JV	JUNIPERUS VIRGINIANA	EASTERN RED CEDAR	39	HEAVY	6'-8'	YES

THE NUMBER OF 2" CALIPER TREES REQUIRED PER ACRE IS 100; THEREFORE, 29 TREES ARE REQUIRED FOR THIS PLANTING SITE THIS IS A CATEGORY 2 PLANTING AREA. CONTAINER GROWN PLANT MATERIAL MAY BE SUBSTITUTED FOR B&B PLANTING STOCK.



TREE#	DBH	COMMON NAME	BOTANICAL NAME	REGULATORY STATUS	CONDITION	CONDITION NOTES	DISPOSITION
64	31	TULIPTREE	Liriodendron tulipifera	SPECIMEN	POOR	GROWING ROOT 2', LARGE DW (D+), SMALL DW (1-2), BROKEN LIMBS, VINES	REMOVED
65	26	MAPLE SILVER	Acer saccharinum	SIGNIFICANT	FAIR	BASAL DECAY, CO-DOMINANT STEMS, SMALL DW (1-2), VINES	REMOVED
66	24	CHERRY BLACK	Prunus serotina	SIGNIFICANT	POOR	GROWING ROOT 2', EXCESSIVE LEAN, LARGE DW (D+), SMALL DW (1-2), BROKEN LIMBS, VINES	REMOVED
67	24	CHERRY BLACK	Prunus serotina	SIGNIFICANT	POOR	CO-DOMINANT STEMS, LARGE DW (D+), SMALL DW (1-2), BROKEN LIMBS, VINES	REMOVED
68	27	CHERRY BLACK	Prunus serotina	SIGNIFICANT	POOR	GROWING ROOT 2', EXCESSIVE LEAN, CO-DOMINANT STEMS, LARGE DW (D+), SMALL DW (1-2), BROKEN LIMBS, VINES	REMOVED
69	24	CHERRY BLACK	Prunus serotina	SIGNIFICANT	FAIR	GROWING ROOT 2', EXCESSIVE LEAN, CO-DOMINANT STEMS, LARGE DW (D+), SMALL DW (1-2), BROKEN LIMBS, VINES	REMOVED
70	31	MAPLE RED	Acer rubrum	SPECIMEN	FAIR	INCLUDED BERRY WALK UNION, CO-DOMINANT STEMS, SMALL DW (1-2)	SAVED
71	27	MAPLE RED	Acer rubrum	SIGNIFICANT	FAIR	EXCESSIVE LEAN, SMALL DW (1-2), BROKEN LIMBS	SAVED
72	24	MAPLE RED	Acer rubrum	SIGNIFICANT	FAIR	TRUNK DECAY, CO-DOMINANT STEMS, SMALL DW (1-2), BROKEN LIMBS	SAVED
73	41	MAPLE RED	Acer rubrum	SPECIMEN	FAIR	EXCESSIVE LEAN, INCLUDED BERRY WALK UNION, CO-DOMINANT STEMS, SMALL DW (1-2)	SAVED
74	25	MAPLE RED	Acer rubrum	SIGNIFICANT	FAIR	ONESIDE, EXCESSIVE LEAN, CO-DOMINANT STEMS, SMALL DW (1-2)	SAVED
75	28	TULIPTREE	Liriodendron tulipifera	SIGNIFICANT	GOOD	MODERATE LEAN, SMALL DW (1-2)	REMOVED
76	30	TULIPTREE	Liriodendron tulipifera	SPECIMEN	GOOD	MODERATE LEAN, GROWING ROOTS, SMALL DW (1-2)	REMOVED
77	25	MAPLE RED	Acer rubrum	SIGNIFICANT	FAIR	CO-DOMINANT STEMS, SMALL DW (1-2), BROKEN LIMBS	REMOVED
78	27	OAK, NORTHERN RED	Quercus rubra	SIGNIFICANT	POOR	LARGE DW (D+), SMALL DW (1-2), BROKEN LIMBS, BRANCH DECAY, VINES	REMOVED
79	31	MAPLE RED	Acer rubrum	SPECIMEN	FAIR	INCLUDED BERRY WALK UNION, CO-DOMINANT STEMS, SMALL DW (1-2)	REMOVED
80	26	CHERRY BLACK	Prunus serotina	SIGNIFICANT	FAIR	GROWING ROOT 2', EXCESSIVE LEAN, CO-DOMINANT STEMS, SMALL DW (1-2), BROKEN LIMBS	REMOVED
81	25	MAPLE RED	Acer rubrum	SIGNIFICANT	FAIR	ONESIDE, BASAL DECAY, CO-DOMINANT STEMS, SMALL DW (1-2), BROKEN LIMBS	REMOVED
82	28	TULIPTREE	Liriodendron tulipifera	SIGNIFICANT	FAIR	FLIPPING LIMBS, LARGE DW (D+), SMALL DW (1-2), BROKEN LIMBS	REMOVED

LEGEND

- CRZ BOUNDARY
- PROP. BUILDING
- PROP. SIDEWALK/CONCRETE
- CURB AND GUTTER
- CONTOURS
- PROPOSED RETAINING WALL
- FENCE
- PROPOSED STORM
- PROPOSED SEWER
- PROPOSED WATER
- LIMIT OF DISTURBANCE
- DRAINAGE AREAS
- PROPERTY LINE
- EXISTING CONTOUR
- EX. GUARD RAIL
- EXISTING CURB
- EX. STREAM VALLEY BUFFER
- 100-YR FLOOD PLAN
- EX. FOREST
- PROTECTED VEGETATION
- PROPOSED ASPHALT
- PROPOSED CONCRETE
- X REMOVED ST

A MARYLAND REGISTERED PROFESSIONAL ENGINEER OR ARCHITECT SEAL AND SIGNATURE ON PLAN WILL BE ACCEPTED AS PRIMA FACIE EVIDENCE THAT PLANS ARE IN COMPLIANCE WITH APPLICABLE CODES AND REGULATIONS.

Professional Certification
I hereby certify that these documents were prepared or approved by me, and that I am a duly licensed professional engineer under the laws of the State of Maryland.
License No.: 35287
Expiration Date: 01-07-26

OWNER/APPLICANT:
151 LAKELAND LLC
STEVE ECKERT
STEVE@CLASSICCOMMUNITYCORP.COM
8120 WOODMONT AVENUE
BETHESDA, MARYLAND 20814

ARCHITECT:
HARRISON
AMIR HUSSAIN
AHUSSAIN@WEAREHARRISON.COM
14850 QUORUM DR #450
DALLAS TX, 75254

ENGINEER:
JOHNSON BERNAT ASSOCIATES, INC.
C/O ANDREW BRADSHAW
205 N. FREDERICK AVE
SUITE 100
GAITHERSBURG, MD 20877
abradshaw@jba-inc.com
301-963-1133

SCALE: 1" = 30"

205 N. Frederick Ave., Suite 100
Gaithersburg, MD 20877
Tel: (301) 963-1133
Fax: (301) 963-6306
www.jba-inc.net

JBA
Johnson • Bernat • Associates, Inc.
Engineering Surveying Planning

REVISIONS PRIOR TO APPROVAL

REV. NO. DATE

LAKELANDS OVERLOOK FOREST CONSERVATION PLAN
151 LAKELANDS DRIVE
GAITHERSBURG, MD 20878

PROJ NO:
SCALE: 1" = 30"
DATE: 7/22/2024
SHEET: C-2.02
FILE NO: 24-016

