

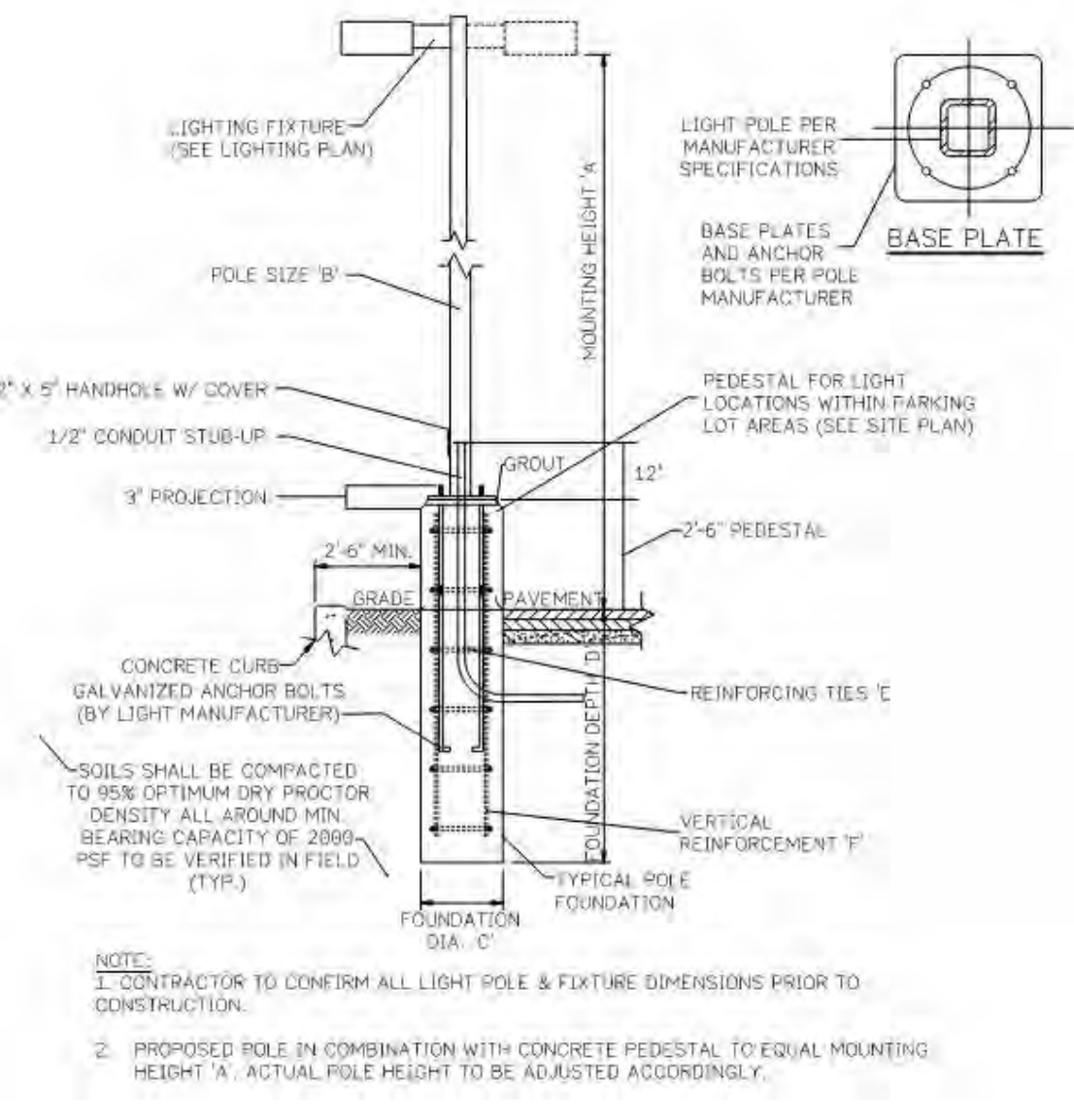
CRUS



SLM



XWM



Label	CalcType	Units	Avg	Max	Min	Avg/Min	Max/Min
ALL CALCS AT GROUND	Illuminance	Fc	2.25	33.1	0.0	N.A.	N.A.
PROPERTY LINE	Illuminance	Fc	0.13	0.5	0.0	N.A.	N.A.
PAVED AREA	Illuminance	Fc	4.18	33.1	0.6	6.97	55.17

Symbol	Qty	Label	Arrangement	Description	Mounting Height	LLD	LLF	Arr. Lum. Lumens	Arr. Watts
[Symbol]	4	A	Single	SLM-LED-18L-SIL-FT-50-70CRI-IL-SINGLE	18FT POLE + 2FT BASE	1.000	1.000	12043	135
[Symbol]	3	A2	D180°	SLM-LED-18L-SIL-FT-50-70CRI-D180	18FT POLE + 2FT BASE	1.000	1.000	37808	270
[Symbol]	1	C	Single	CRUS-SC-LW-50	10FT	1.000	1.000	11148	73
[Symbol]	15	W	Single	XWM-FT-LED-06L-50	10FT	1.000	1.000	6557	47

PHOTOMETRIC EVALUATION  
NOT FOR CONSTRUCTION

Based on the information provided, all dimensions and luminaire locations shown represent recommended positions. The engineer and/or architect must determine the applicability of the layout to existing or future field conditions.

This lighting plan represents illumination levels calculated from laboratory data taken under controlled conditions in accordance with The Illuminating Engineering Society (IES) approved methods. Actual performance of any manufacturer's luminaires may vary due to changes in electrical voltage, tolerance in lamps/LED's and other variable field conditions. Calculations do not include obstructions such as buildings, curbs, landscaping, or any other architectural elements unless noted. Fixture nomenclature noted does not include mounting hardware or poles. This drawing is for photometric evaluation purposes only and should not be used as a construction document or as a final document for ordering product.

Total Project Watts  
Total Watts = 2128

1000 ALLIANCE RD. CHOWHAT, OHIO 45044 USA  
937.793.0338 • FAX 937.793.0323

LIGHTING PROPOSAL LO-160791-3  
VHVP CLEAN CAR WASH  
GATHERSBURG, MD

BY/CHK	DATE: 6/6/24	REV: 10/14/24	SHEET 1 OF 1
--------	--------------	---------------	--------------

SCALE: 1"=16' 0 16



Catalog #: \_\_\_\_\_ Project: \_\_\_\_\_

Prepared By: \_\_\_\_\_ Date: \_\_\_\_\_ Type: \_\_\_\_\_

# Scottsdale® Legacy (CRUS SM)

## LED Surface Mount Canopy Luminaire

**IP66**

### OVERVIEW

Lumen Package	5,000 - 22,000
Wattage Range	38 - 152
Efficacy Range (LPW)	114 -156
Weight lbs(kg)	32 (14.5)

### QUICK LINKS

[Ordering Guide](#)[Performance](#)[Photometrics](#)[Dimensions](#)

## FEATURES & SPECIFICATIONS

### Construction

- Features an ultra-slim 11/16" profile die-cast housing, with flat clear tempered glass lens mounted to a die formed steel housing with one conduit knockout and four mounting holes. Unit is water-resistant, sealed and IP66 rated. Integral designed heat sink does not trap dirt and grime, ensuring cool running performance over the life of the fixture.
- Standard color is white and is finished with LSI's DuraGrip® polyester powder coat process. DuraGrip withstands extreme weather changes without cracking or peeling.
- Luminaire assembly incorporates a pressure stabilizing vent breather to prevent seal fatigue and failure.

### Optical System

- Features an array of select, mid-power, high brightness, high efficiency LED; 3000K, 4000K, 5000K color temperature, 80 CRI (nominal).
- Choice of Symmetric or Asymmetric distribution. Asymmetric provides a wider distribution pattern.
- Six Lumen Packages: 5,000, 9,000, 10,000, 13,000, 18,000 and 22,000 Lumens.

### Electrical

- High performance factory programmable driver features over-voltage, under voltage, short-circuit and over temperature protection with integral 6kV surge protection that meets IEEE C62.41.2 and ANSI C82.77-5 Location Category C Low standards. Additional field replaceable 10kV surge protection device meets a minimum Category C Low operation (per ANSI/IEEE C62.41.2). Custom lumen and wattage packages available.
- Driver components are fully encased in potting for moisture resistance. Complies with IEC and FCC standards. 0-10 V dimming supplied standard with all drive currents.
- Universal voltage power supply, 120-277 VAC, 50/60 HZ and 347-480 VAC, 50/60 HZ input.
- -40°C to 55°C (-40°F to 131°F) ambient operating temperature. (Varies based on lumen package and mounting style see performance data for specifics.)
- Minimum 60,000 to 100,000 hours depending upon the ambient temperature of the installation location (see performance data for specifics.)

### Warranty

- LSI LED fixtures carry a 5-year warranty (contact your LSI representative for extended warranty options.)

### Listings

- UL and ETL listed to UL 1598, UL 8750 and other U.S. and International safety standards. Suitable for wet locations.
- Meets Buy American Act requirements.
- IDA compliant with 3000K or lower color temperature.
- DesignLights Consortium® (DLC) qualified product. Not all versions of this product may be DLC qualified. Please check the DLC Qualified Products List at [www.designlights.org/QPL](http://www.designlights.org/QPL) to confirm which versions are qualified.





# Scottsdale® Legacy LED Surface Mount Canopy Luminaire

## ORDERING GUIDE

[Back to Quick Links](#)TYPICAL ORDER EXAMPLE: **CRUS SM SC LED VHO 50 UNV WHT**

Prefix	Distribution	Light Source	Drive Current	Color Temperature	Input Voltage	Finish	Options
<b>CRUS SM</b> (Surface Mount)	<b>SC</b> - Standard Symmetric <b>AC</b> - Asymmetric <sup>1</sup>	<b>LED</b>	<b>SLW</b> - Super Low Watt <b>VLW</b> - Very Low Watt <b>LW</b> - Low Watt <b>SS</b> - Super Saver <b>HO</b> - High Output <b>VHO</b> - Very High Output	<b>50</b> - 5000K <b>40</b> - 4000K <b>30</b> - 3000K	<b>UNV</b> - Universal Voltage (120-277V)  <b>347 - 480 Volt</b>	<b>WHT</b> - White <b>BRZ</b> - Bronze <b>BLK</b> - Black	<b>DFL</b> - Diffused Lens

**FOOTNOTES:**

1. AC distribution utilizes a reflector which alters the look from a standard SC distribution.

## Accessory Ordering Information

Description	Order Number
SSA Slope Surface Adaptor	52152 CLR
10" Toggle Cable Hanger	TCH10

## PERFORMANCE

[Back to Quick Links](#)

DELIVERED LUMENS											
Lumen Package	Distribution	3000K CCT			4000K CCT			5000K CCT			Wattage
		Delivered Lumens	Efficacy	BUG Rating	Delivered Lumens	Efficacy	BUG Rating	Delivered Lumens	Efficacy	BUG Rating	
VHO	SC	21301	140	B4-U0-G2	21835	144	B4-U0-G2	22697	150	B4-U0-G2	152
	AC	17355	114	B3-U0-G3	17799	117	B3-U0-G3	18502	122	B3-U0-G3	
HO	SC	17889	143	B3-U0-G1	18346	146	B3-U0-G2	19071	152	B4-U0-G2	125
	AC	14582	116	B3-U0-G2	14955	119	B3-U0-G2	15546	124	B3-U0-G2	
SS	SC	13113	141	B3-U0-G1	13449	144	B3-U0-G1	13980	150	B3-U0-G1	93
	AC	11468	123	B3-U0-G2	11761	126	B3-U0-G2	12226	131	B3-U0-G2	
LW	SC	10457	144	B3-U0-G1	10724	148	B3-U0-G1	11148	154	B3-U0-G1	73
	AC	9145	126	B2-U0-G2	9379	129	B2-U0-G2	9749	134	B2-U0-G2	
VLW	SC	8783	146	B3-U0-G1	9008	149	B3-U0-G1	9364	155	B3-U0-G1	60
	AC	7681	127	B2-U0-G1	7878	131	B2-U0-G1	8189	136	B2-U0-G1	
SLW	SC	5585	146	B2-U0-G1	5728	150	B2-U0-G1	5954	156	B2-U0-G1	38
	AC	4884	128	B1-U0-G1	5009	131	B1-U0-G1	5207	136	B1-U0-G1	

\*LEDs are frequently updated therefore values are nominal.

ELECTRICAL DATA (AMPS)							
Lumen Package	Wattage	120V	208V	240V	277V	347V	480V
VHO	152	1.27	0.73	0.64	0.55	0.44	0.32
HO	124	1.03	0.6	0.52	0.45	0.36	0.26
SS	92	0.77	0.44	0.38	0.33	0.27	0.19
LW	72	0.6	0.35	0.3	0.26	0.21	0.15
VLW	60	0.5	0.29	0.25	0.22	0.17	0.13
SLW	38	0.32	0.18	0.16	0.14	0.11	0.08

\*Electrical data at 25C (77F). Actual wattage may differ by +/-10%.

OPERATING TEMPERATURE		
LUMEN PACKAGE	MOUNTING	Max
VHO	Metal/Wood Canopy	45 C
HO	Metal/Wood Canopy	45 C
SS	Metal/Wood Canopy	55 C

**FOOTNOTES:**

- Lumen maintenance values at 25°C are calculated per TM-21 based on LM-80 data and in-situ luminaire testing.
- In accordance with IESNA TM-21-11, Projected Values represent interpolated value based on time durations that are within six times (6X) the IESNA LM-80-08 total test duration (in hours) for the device under testing (DUT) i.e. the packaged LED).
- In accordance with IESNA TM-21-11, Calculated Values represent time durations that exceed six times NA LM-80-08 total test duration (in hours) for the device under testing (DUT) i.e. the packaged LED).

Recommended Lumen Maintenance <sup>1</sup> CRUS SM VHO					
Ambient Temp C	Initial <sup>2</sup>	25k hr <sup>2</sup>	50k hr <sup>2</sup>	75k hr <sup>3</sup>	100k hr <sup>3</sup>
0 C	102%	97%	92%	88%	84%
10 C	102%	97%	92%	88%	84%
20 C	102%	97%	92%	88%	84%
25 C	102%	97%	92%	88%	84%
30 C	102%	97%	92%	88%	84%
40 C	101%	95%	90%	85%	80%
50 C	101%	94%	89%	83%	78%

Recommended Lumen Maintenance <sup>1</sup> CRUS SM SS					
Ambient Temp C	Initial <sup>2</sup>	25k hr <sup>2</sup>	50k hr <sup>2</sup>	75k hr <sup>3</sup>	100k hr <sup>3</sup>
0 C	102%	97%	92%	88%	84%
10 C	102%	97%	92%	88%	84%
20 C	102%	97%	92%	88%	84%
25 C	102%	97%	92%	88%	84%
30 C	102%	97%	92%	88%	84%
40 C	102%	97%	92%	88%	84%
50 C	101%	95%	91%	86%	82%





# Scottsdale® Legacy LED Surface Mount Canopy Luminaire

## PHOTOMETRICS

[Back to Quick Links](#)

Luminaire photometry has been conducted by an accredited testing laboratory in accordance with IESNA LM-79-08. As specified by IESNA LM-79-08 the entire luminaire is tested as the source resulting in a luminaire efficiency of 100%.

See <http://www.lsi-industries.com/products/led-lighting-solutions.aspx> for detailed photometric data.

### CRUS-SM-SC-SS-50

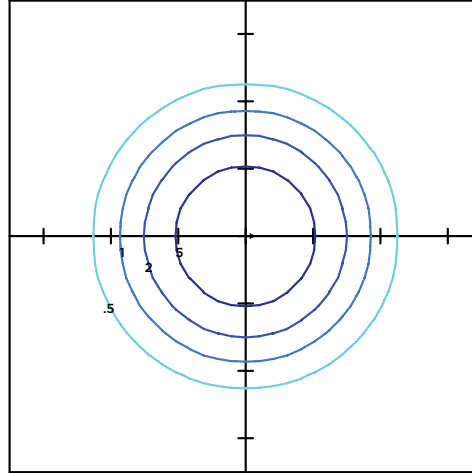
#### LUMINAIRE DATA

Type 5 Distribution	
Description	5000 Kelvin, 80 CRI
Delivered Lumens	13,980
Watts	93
Efficacy	150
IES Type	Type VS - Very Short
BUG Rating	B3-U0-G1

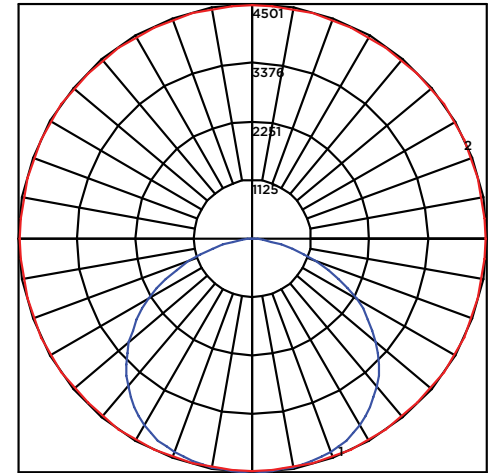
#### Zonal Lumen Summary

Zone	Lumens	%Luminaire
Low (0-30°)	3654.2	26%
Medium (30-60°)	7541.2	54%
High (60-80°)	2641.4	19%
Very High (80-90°)	143.2	1%
Uplight (90-180°)	0	0%
Total Flux	13980	100%

#### ISO FOOTCANDLE



#### POLAR CURVE



15' Mounting Height/15' Grid Spacing

■ 5 FC ■ 2 FC ■ 1 FC ■ .5 FC

### CRUS-SM-AC-SS-50

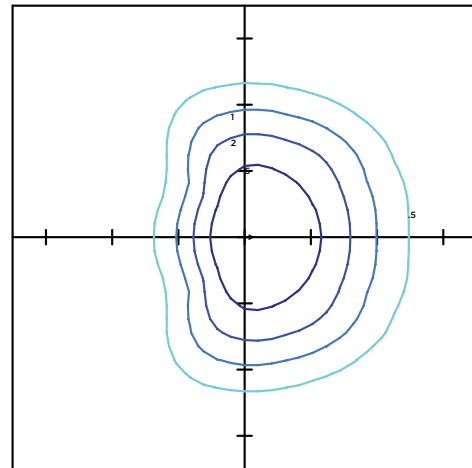
#### LUMINAIRE DATA

Type 3 Distribution	
Description	5000 Kelvin, 80 CRI
Delivered Lumens	12,226
Watts	93
Efficacy	131
IES Type	Type III, Very Short
BUG Rating	B3-U0-G2

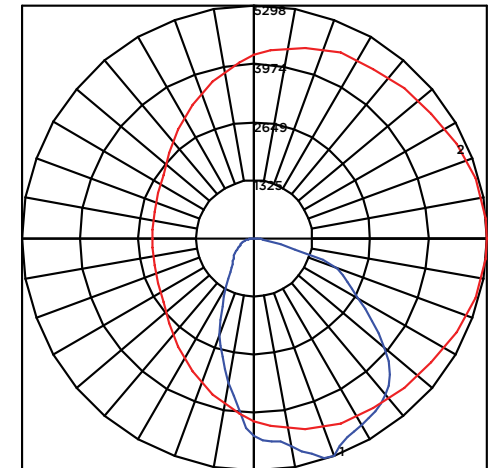
#### Zonal Lumen Summary

Zone	Lumens	%Luminaire
Low (0-30°)	3240.3	27%
Medium (30-60°)	6245.5	51%
High (60-80°)	2594.6	21%
Very High (80-90°)	146.1	1%
Uplight (90-180°)	0	0%
Total Flux	12227	100%

#### ISO FOOTCANDLE



#### POLAR CURVE



15' Mounting Height/15' Grid Spacing

■ 5 FC ■ 2 FC ■ 1 FC ■ .5 FC

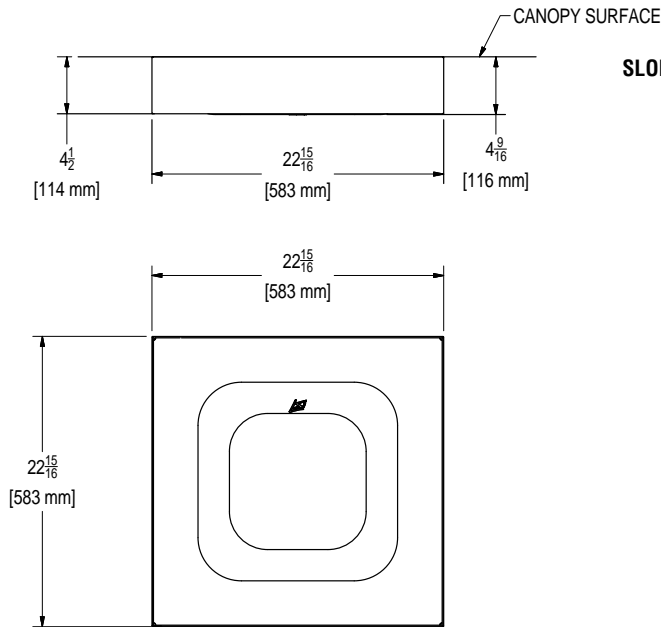




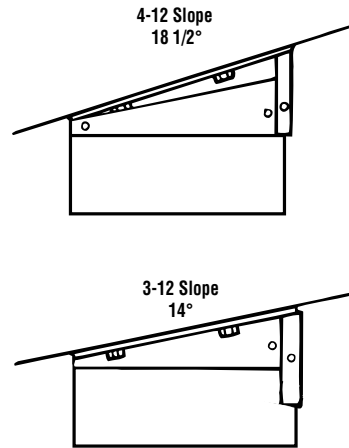
# Scottsdale® Legacy LED Surface Mount Canopy Luminaire

## PRODUCT DIMENSIONS

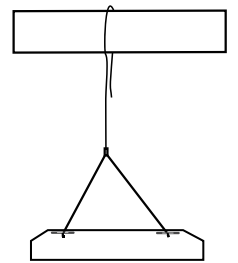
[Back to Quick Links](#)



### SLOPE SURFACE ADAPTOR – SSA ACCESSORY



### TOGGLE CABLE HANGER





Catalog #: \_\_\_\_\_ Project: \_\_\_\_\_

Prepared By: \_\_\_\_\_ Date: \_\_\_\_\_ Type: \_\_\_\_\_

# Slice Medium (SLM)

## Outdoor LED Area Light



OVERVIEW	
Lumen Package	9,000 - 48,000
Wattage Range	63 - 401
Efficacy Range (LPW)	112 - 156
Weight lbs(kg)	30 (13.6)

### QUICK LINKS

[Ordering Guide](#)
[Performance](#)
[Photometrics](#)
[Dimensions](#)

## FEATURES & SPECIFICATIONS

### Construction

- Rugged die-cast aluminum housing contains factory prewired driver and optical unit. Cast aluminum wiring access door located underneath.
- Fixtures are finished with LSI's DuraGrip® polyester powder coat finishing process. The DuraGrip finish withstands extreme weather changes without cracking or peeling. Other standard LSI finishes available. Consult factory.
- Shipping weight: 37 lbs in carton.

### Optical System

- State-of-the-Art one piece silicone optic sheet delivers industry leading optical control with an integrated gasket to provide IP66 rated seal.
- Proprietary silicone refractor optics provide exceptional coverage and uniformity in distribution types 2, 3, 5W, FT, FTA and AM.
- Silicone optical material does not yellow or crack with age and provides a typical light transmittance of 93%.
- Zero uplight.
- Available in 5000K, 4000K, and 3000K color temperatures per ANSI C78.377. Also available in phosphor converted amber with peak intensity at 610nm.
- Minimum CRI of 70
- Integral louver (IL) and house-side shield (IH) options available for improved backlight control without sacrificing street side performance. See page 3 for more details.

### Electrical

- High-performance driver features overvoltage, under-voltage, short-circuit and over temperature protection.
- 0-10V dimming (10% - 100%) standard.
- Standard Universal Voltage (120-277 VAC) Input 50/60 Hz or optional High Voltage (347-480 VAC).
- L80 Calculated Life: >100k Hours (See Lumen Maintenance on Page 5)
- Total harmonic distortion: <20%
- Operating temperature: -40°C to +50°C (-40°F to +122°F). 42L and 48L lumen packages rated to +40°C.
- Power factor: >.90
- Input power stays constant over life.
- Field replaceable 10kV surge protection device meets a minimum Category C Low operation (per ANSI/IEEE C62.41.2).
- High-efficacy LEDs mounted to metal-core circuit board to maximize heat dissipation
- Driver is fully encased in potting material for moisture resistance and complies with FCC standards. Driver and key electronic components can easily be accessed.

### Controls

- Optional integral passive infrared Bluetooth™ motion and photocell sensor. Fixtures operate independently and can be commissioned via iOS or Android configuration app.
- LSI's AirLink™ wireless control system options reduce energy and maintenance costs while optimizing light quality 24/7.

### Installation

- A single fastener secures the hinged door, underneath the housing and provides quick & easy access to the electrical compartment.
- Included terminal block accepts up to 12 ga. wire.
- Utilizes LSI's traditional B3 drill pattern. (See drawing on page 9)

### Warranty

- LSI luminaires carry a 5-year limited warranty. Refer to <https://www.lsiindustries.com/resources/terms-and-warranty.aspx> for more information.

### Listings

- Listed to UL 1598 and UL 8750.
- Meets Buy American Act requirements.
- IDA compliant; with 3000K color temperature selection.
- Title 24 Compliant; see local ordinance for qualification information.
- Suitable for wet locations.
- IP66 rated Luminaire per IEC 60598-1.
- 3G rated for ANSI C136.31 high vibration applications applications are qualified.
- DesignLights Consortium® (DLC) qualified product. Not all versions of this product may be DLC qualified. Please check the DLC Qualified Products List at [www.designlights.org/QPL](http://www.designlights.org/QPL) to confirm which versions are qualified.
- Patented Silicone Optics (US Patent NO. 10,816,165 B2)





# Slice Medium Outdoor LED Area Light

## ORDERING GUIDE

[Back to Quick Links](#)TYPICAL ORDER EXAMPLE: **SLM LED 36L SIL FTA UNV DIM 50 70CRI ALSCS04 BRZ IL**

Luminaire Prefix	Light Source	Lumen Package	Light Output	Distribution	Orientation <sup>2</sup>	Voltage	Driver
<b>SLM</b> - Slice Medium	<b>LED</b>	<b>9L</b> - 9,000 lms <b>12L</b> - 12,000 lms <b>18L</b> - 18,000 lms <b>24L</b> - 24,000 lms <b>30L</b> - 30,000 lms <b>36L</b> - 36,000 lms <b>42L</b> - 42,000 lms <b>48L</b> - 48,000 lms Custom Lumen Packages <sup>1</sup>	<b>SIL</b> - Silicone	<b>2</b> - Type 2 <b>3</b> - Type 3 <b>5W</b> - Type 5 Wide <b>FT</b> - Forward Throw <b>FTA</b> - Forward Throw Automotive <b>AM</b> - Automotive Merchandise	<b>(blank)</b> - standard (no rotation) <b>L</b> - Optics rotated left 90° <b>R</b> - Optics rotated right 90°	<b>UNV</b> - Universal Voltage (120-277V) <b>HV</b> - High Voltage (347-480V)	<b>DIM</b> - 0-10V Dimming (0-10%)

Color Temp	Color Rendering	Controls (Choose One)	Finish	Options
<b>50</b> - 5,000 CCT <b>40</b> - 4,000 CCT <b>30</b> - 3,000 CCT <b>AMB</b> - Phosphor Converted Amber <sup>12</sup>	<b>70CRI</b> - 70 CRI	<b>(Blank)</b> - None  <b>Wireless Controls System</b> <b>ALSC</b> - AirLink Synapse Control System <b>ALSCS02</b> - AirLink Synapse Control System with 12-20' Motion Sensor <b>ALSCS04</b> - AirLink Synapse Control System with 20-40' Motion Sensor <b>ALBCS1</b> - AirLink Blue Wireless Motion & Photo Sensor Controller (8-24' mounting height) <sup>4</sup> <b>ALBCS2</b> - AirLink Blue Wireless Motion & Photo Sensor Controller (25-40' mounting height) <sup>4</sup> <b>Stand-Alone Controls</b> <b>EXT</b> - 0-10V Dimming leads extended to housing exterior <b>CR7P</b> - 7 Pin Control Receptacle ANSI C136.41 <sup>6</sup> <b>IMSBT1</b> - Integral Bluetooth™ Motion and Photocell Sensor (8-24' MH) <sup>5</sup> <b>IMSBT2</b> - Integral Bluetooth™ Motion and Photocell Sensor (25-40' MH) <sup>5</sup> <b>Button Type Photocells</b> <b>PCI120</b> - 120V <b>PCI208-277</b> - 208 -277V <b>PCI347</b> - 347V	<b>BLK</b> - Black <b>BRZ</b> - Dark Bronze <b>GMG</b> - Gun Metal Gray <b>GPT</b> - Graphite <b>MSV</b> - Metallic Silver <b>PLP</b> - Platinum Plus <b>SVG</b> - Satin Verde Green <b>WHT</b> - White	<b>(Blank)</b> - None <b>IH</b> - Integral Houseside Shield <sup>2</sup> <b>IL</b> - Integral Louver (Sharp Spill Light Cutoff) <sup>2</sup>

### Accessories Ordering Information<sup>7</sup>

Controls Accessories	
Description	Order Number
Twist Lock Photocell (120V) for use with CR7P <sup>8</sup>	122514
Twist Lock Photocell (208-277) for use with CR7P <sup>8</sup>	122515
Twist Lock Photocell (347V) for use with CR7P <sup>8</sup>	122516
Twist Lock Photocell (480V) for use with CR7P <sup>8</sup>	1225180
AirLink 5 Pin Twist Lock Controller <sup>8</sup>	61409
AirLink 7 Pin Twist Lock Controller <sup>8</sup>	661410
Pole-Mounted Occupancy Sensor (24V)	663284CLR <sup>9</sup>
Shorting Cap for use with CR7P <sup>8</sup>	14932

Fusing Accessories <sup>11</sup>	
Description	Order Number
Single Fusing (120V)	FK120
Single Fusing (277V)	FK277
Double Fusing (208V, 240V)	DFK240
Double Fusing (480V)	DFK480
Double Fusing (347V)	DFK347

Mounting Accessories <sup>9</sup>	
Description	Order Number
Round Pole Adapter (3" Round/Tapered Poles)	408273CLR
Round Pole Adapter (4" Round Poles)	379967CLR
Round Pole Adapter (5" Round Poles)	379968CLR
Universal Mounting Bracket	684616CLR
Adjustable Slip Fitter (2" - 2 3/8" Tenon)	688138CLR
Quick Mount Pole Bracket (Square Pole)	687073CLR
Quick Mount Pole Bracket (4-5" Round Pole)	689903CLR
15 Tilt Quick Mount Pole Bracket (Square Pole)	688003CLR
15 Tilt Quick Mount Pole Bracket (4-5" Round Pole)	689905CLR
Wall Mount Bracket	382132CLR
Wood Pole Bracket (6" Minimum Pole Diameter)	751219CLR

Shielding & Miscellaneous Accessories	
Description	Order Number
Integral Louver/Shield	690981
Internal Houseside Shield	743415
10' Linear Bird Spike Kit (6' Recommended per Luminaire)	751632

#### FOOTNOTES:

- Custom lumen and wattage packages available, consult factory. Values are within industry standard tolerances but not DLC listed.
- Not available on "Type 5W" distribution.
- Consult factory for availability.
- Not available in HV.
- IMSBT is field configurable via the LSI app that can be downloaded from your smartphone's native app store. Consult Factory for 347-480V.

- Control device or shorting cap must be ordered separately. See Accessory Ordering Information.
- Accessories are shipped separately and field installed.
- Fusing must be located in hand hole of pole.
- "CLR" denotes finish. See Finish options.
- Only available with ALSC/ALSCH control options.
- Fusing must be located in hand hole of pole.
- Only available in 9L and 12L Lumen Packages. Consult factory for lead time and availability.

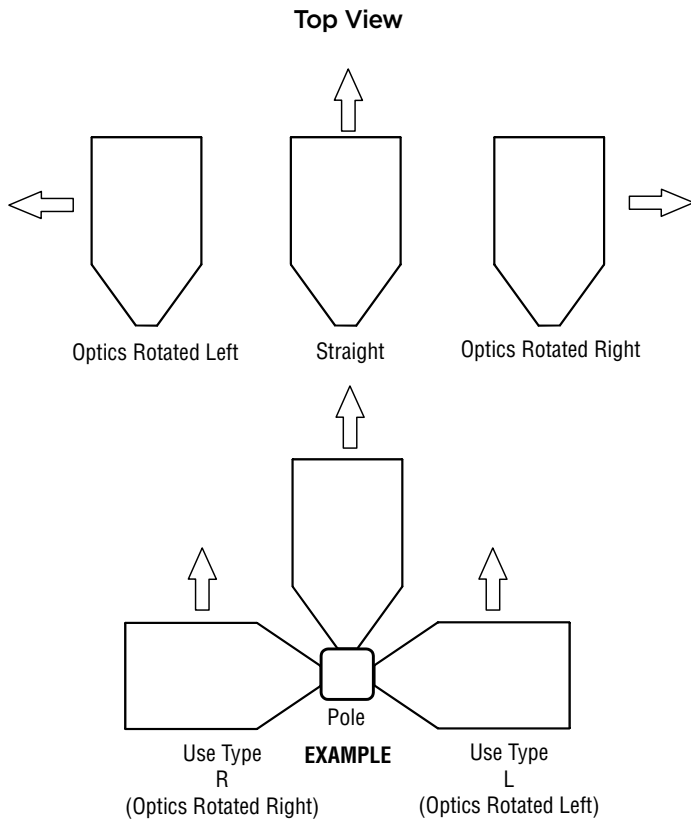




# Slice Medium Outdoor LED Area Light

## OPTICS ROTATION

## ACCESSORIES/OPTIONS



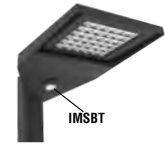
### Integral Louver (IL) and House-Side Shield (IH)

Accessory louver and shield available for improved backlight control without sacrificing street side performance. LSI's Integral Louver (L) and Integral House-Side Shield (IH) options deliver backlight control that significantly reduces spill light behind the poles for applications with pole locations close to adjacent properties. The design maximizes forward reflected light while reducing glare, maintaining the optical distribution selected, and most importantly eliminating light trespass. Both options rotate with the optical distribution.

Luminaire Shown with Integral Louver (IL)



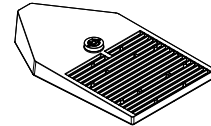
Luminaire Shown with IMSBT Option



### 7 Pin Photoelectric Control

7-pin ANSI C136.41-2013 control receptacle option available for twist lock photocontrols or wireless control modules. Control accessories sold separately. Dimming leads from the receptacle will be connected to the driver dimming leads (Consult factory for alternate wiring).

Fixture Shown with CR7P





# Slice Medium Outdoor LED Area Light

## PERFORMANCE

[Back to Quick Links](#)

Delivered Lumens*												
Lumen Package	Distribution	CRI	3000K CCT			4000K CCT			5000K CCT			Wattage
			Delivered Lumens	Efficacy	BUG Rating	Delivered Lumens	Efficacy	BUG Rating	Delivered Lumens	Efficacy	BUG Rating	
9L	2	70	9411	149	B2-U0-G2	9603	152	B2-U0-G2	9603	152	B2-U0-G2	63
	3		9548	152	B2-U0-G2	9743	155	B2-U0-G2	9743	155	B2-U0-G2	
	5W		9261	147	B3-U0-G2	9450	150	B3-U0-G2	9450	150	B3-U0-G2	
	FT		9464	150	B2-U0-G2	9657	153	B2-U0-G2	9657	153	B2-U0-G2	
	FTA		9531	151	B2-U0-G2	9725	154	B2-U0-G2	9725	154	B2-U0-G2	
	AM		9649	153	B2-U0-G1	9845	156	B2-U0-G1	9845	156	B2-U0-G1	
12L	2	70	12533	147	B3-U0-G2	12788	150	B3-U0-G2	12788	150	B3-U0-G2	85
	3		12714	150	B2-U0-G2	12974	153	B2-U0-G2	12974	153	B2-U0-G2	
	5W		12333	145	B4-U0-G2	12584	148	B4-U0-G2	12584	148	B4-U0-G2	
	FT		12603	148	B2-U0-G2	12861	151	B2-U0-G2	12861	151	B2-U0-G2	
	FTA		12692	149	B3-U0-G2	12950	152	B3-U0-G2	12950	152	B3-U0-G2	
	AM		12848	151	B3-U0-G1	13111	154	B3-U0-G2	13111	154	B3-U0-G2	
18L	2	70	18421	136	B3-U0-G3	18797	139	B3-U0-G3	18797	139	B3-U0-G3	135
	3		18691	138	B3-U0-G3	19072	141	B3-U0-G3	19072	141	B3-U0-G3	
	5W		18128	134	B4-U0-G2	18498	137	B4-U0-G2	18498	137	B4-U0-G2	
	FT		18526	137	B3-U0-G3	18904	140	B3-U0-G3	18904	140	B3-U0-G3	
	FTA		18656	138	B3-U0-G3	19037	141	B3-U0-G3	19037	141	B3-U0-G3	
	AM		18886	140	B3-U0-G2	19271	143	B3-U0-G2	19271	143	B3-U0-G2	
24L	2	70	24847	141	B4-U0-G3	25354	144	B4-U0-G3	25354	144	B4-U0-G3	176
	3		25210	143	B3-U0-G4	25724	146	B3-U0-G4	25724	146	B3-U0-G4	
	5W		24451	139	B5-U0-G3	24950	142	B5-U0-G3	24950	142	B5-U0-G3	
	FT		24987	142	B3-U0-G4	25497	145	B3-U0-G4	25497	145	B3-U0-G4	
	FTA		25162	143	B4-U0-G3	25676	146	B4-U0-G3	25676	146	B4-U0-G3	
	AM		25473	145	B3-U0-G2	25993	148	B3-U0-G2	25993	148	B3-U0-G2	
30L	2	70	31109	134	B4-U0-G3	31743	137	B4-U0-G3	31743	137	B4-U0-G3	232
	3		31562	136	B4-U0-G4	32206	139	B4-U0-G4	32206	139	B4-U0-G4	
	5W		30612	132	B5-U0-G3	31237	135	B5-U0-G3	31237	135	B5-U0-G3	
	FT		31283	135	B4-U0-G4	31921	138	B4-U0-G4	31921	138	B4-U0-G4	
	FTA		31503	136	B4-U0-G3	32146	139	B4-U0-G3	32146	139	B4-U0-G3	
	AM		31892	137	B3-U0-G3	32543	140	B4-U0-G3	32543	140	B4-U0-G3	
36L	2	70	36846	129	B4-U0-G3	37597	131	B4-U0-G3	37597	131	B4-U0-G3	286
	3		37383	131	B4-U0-G4	38146	133	B4-U0-G4	38146	133	B4-U0-G4	
	5W		36258	127	B5-U0-G4	36998	129	B5-U0-G4	36998	129	B5-U0-G4	
	FT		37052	130	B4-U0-G4	37808	132	B4-U0-G4	37808	132	B4-U0-G4	
	FTA		37313	130	B4-U0-G4	38075	133	B4-U0-G4	38075	133	B4-U0-G4	
	AM		37774	132	B4-U0-G3	38545	135	B4-U0-G3	38545	135	B4-U0-G3	
42L	2	70	42623	121	B5-U0-G4	43492	124	B5-U0-G4	43492	124	B5-U0-G4	352
	3		43245	123	B4-U0-G5	44127	125	B4-U0-G5	44127	125	B4-U0-G5	
	5W		41943	119	B5-U0-G4	42799	122	B5-U0-G4	42799	122	B5-U0-G4	
	FT		42863	122	B4-U0-G5	43737	124	B4-U0-G5	43737	124	B4-U0-G5	
	FTA		43163	123	B5-U0-G4	44044	125	B5-U0-G4	44044	125	B5-U0-G4	
	AM		43696	124	B4-U0-G3	44588	127	B4-U0-G3	44588	127	B4-U0-G3	
48L	2	70	45975	114	B5-U0-G4	46914	116	B5-U0-G4	46914	116	B5-U0-G4	401
	3		46646	115	B4-U0-G5	47598	118	B4-U0-G5	47598	118	B4-U0-G5	
	5W		45243	112	B5-U0-G4	46166	114	B5-U0-G4	46166	114	B5-U0-G4	
	FT		46235	114	B4-U0-G5	47178	116	B4-U0-G5	47178	116	B4-U0-G5	
	FTA		46559	115	B5-U0-G4	47509	117	B5-U0-G4	47509	117	B5-U0-G4	
	AM		47134	116	B4-U0-G3	48096	119	B4-U0-G3	48096	119	B4-U0-G3	



# Slice Medium Outdoor LED Area Light

## PERFORMANCE (CONT.)

ELECTRICAL DATA (AMPS)*						
Lumens	120V	208V	240V	277V	347V	480V
9L	0.53	0.30	0.26	0.23	0.18	0.13
12L	0.71	0.41	0.35	0.31	0.24	0.18
18L	1.13	0.65	0.56	0.49	0.39	0.28
24L	1.47	0.85	0.73	0.64	0.51	0.37
30L	1.93	1.12	0.97	0.84	0.67	0.48
36L	2.38	1.38	1.19	1.03	0.82	0.60
42L	2.93	1.69	1.47	1.27	1.01	0.73
48L	3.4	1.9	1.7	1.5	1.2	.8

\*Electrical data at 25°C (77°F). Actual wattage may differ by +/-10%

### FOOTNOTES:

- Lumen maintenance values at 25C are calculated per TM-21 based on LM-80 data and in-situ testing.
- In accordance with IESNA TM-21-11, Projected Values represent interpolated value based on time durations that are within six times the IESNA LM-80-08 total test duration for the device under testing.
- In accordance with IESNA TM-21-11, Calculated Values represent time durations that exceed six times the IESNA LM-80-08 total test duration for the device under testing.

RECOMMENDED LUMEN MAINTENANCE <sup>1</sup> (9-18L)					
Ambient	Initial <sup>2</sup>	25h <sup>2</sup>	50h <sup>2</sup>	75h <sup>2</sup>	100h <sup>2</sup>
0 C	100%	97%	94%	90%	87%
10 C	100%	97%	94%	90%	87%
20 C	100%	97%	94%	90%	87%
25 C	100%	97%	93%	90%	86%
30 C	100%	97%	93%	89%	86%
40 C	100%	97%	92%	88%	84%
50 C	100%	96%	91%	87%	83%

RECOMMENDED LUMEN MAINTENANCE <sup>1</sup> (24-48L)					
C	0 hrs. <sup>2</sup>	25 hrs. <sup>2</sup>	50 hrs. <sup>2</sup>	75 hrs. <sup>2</sup>	100 hrs. <sup>2</sup>
0 C - 25 C	100%	95%	89%	94%	79%
40 C	100%	94%	87%	80%	74%

## PHOTOMETRICS

[Back to Quick Links](#)

Luminaire photometry has been conducted by a NVLAP accredited testing laboratory in accordance with IESNA LM-79-08. As specified by IESNA LM-79-08 the entire luminaire is tested as the source resulting in a luminaire efficiency of 100%.

See <http://www.lsicorp.com/products/led-lighting-solutions.aspx> for detailed photometric data.

### SLM-LED-30L-SIL-2-40-70CRI

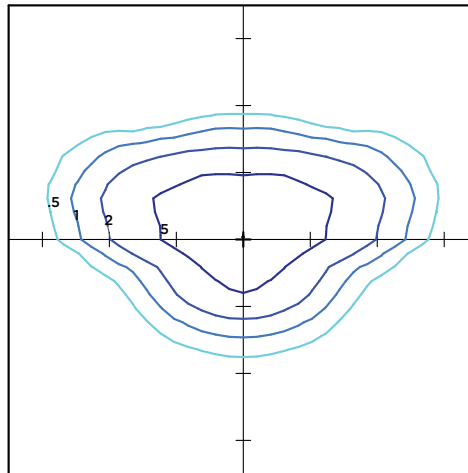
#### LUMINAIRE DATA

Type 2 Distribution	
Description	4000 Kelvin, 70 CRI
Delivered Lumens	31,743
Watts	232
Efficacy	137
IES Type	Type II - Short
BUG Rating	B4-U0-G3

#### Zonal Lumen Summary

Zone	Lumens	%Luminaire
Low (0-30)°	4953	16%
Medium (30-60)°	19157	60%
High (60-80)°	7350	23%
Very High (80-90)°	284	1%
Uplight (90-180)°	0	0%
Total Flux	31743	100%

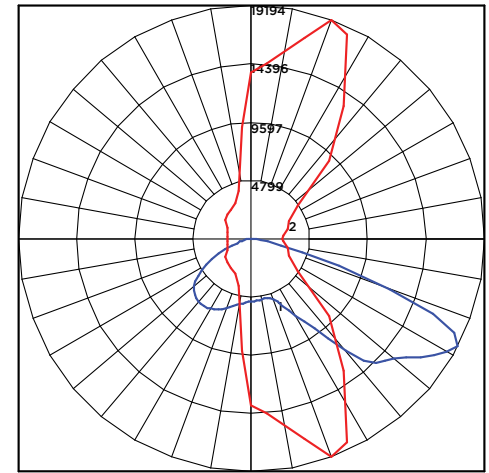
#### ISO FOOTCANDLE



#### 25' Mounting Height/ 25' Grid Spacing

■ 5 FC ■ 2 FC ■ 1 FC ■ 0.5 FC

#### POLAR CURVE





# Slice Medium Outdoor LED Area Light

## PHOTOMETRICS (CONT.)

### SLM-LED-30L-SIL-3-40-70CRI

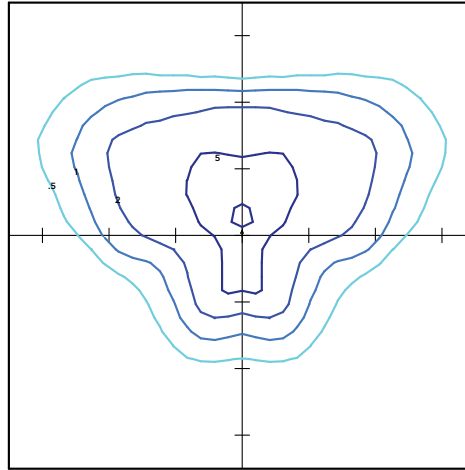
#### LUMINAIRE DATA

Type 3 Distribution	
Description	4000 Kelvin, 70 CRI
Delivered Lumens	32,206
Watts	232
Efficacy	139
IES Type	Type III - Short
BUG Rating	B4-U0-G4

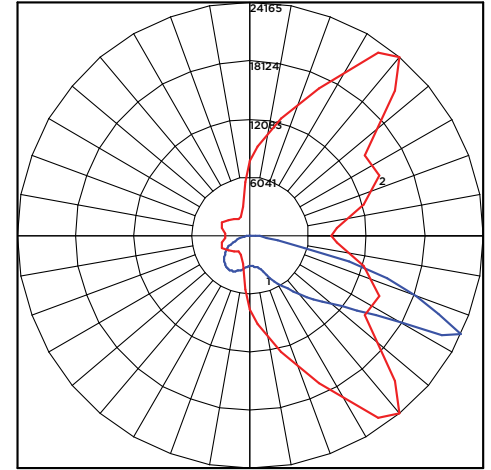
#### Zonal Lumen Summary

Zone	Lumens	%Luminaire
Low (0-30)°	3408	11%
Medium (30-60)°	16397	51%
High (60-80)°	11868	37%
Very High (80-90)°	533	2%
Uplight (90-180)°	0	0%
Total Flux	32206	100%

#### ISO FOOTCANDLE



#### POLAR CURVE



25' Mounting Height/ 25' Grid Spacing  
 ■ 5 FC ■ 2 FC ■ 1 FC ■ 0.5 FC

### SLM-LED-30L-SIL-FT-40-70CRI

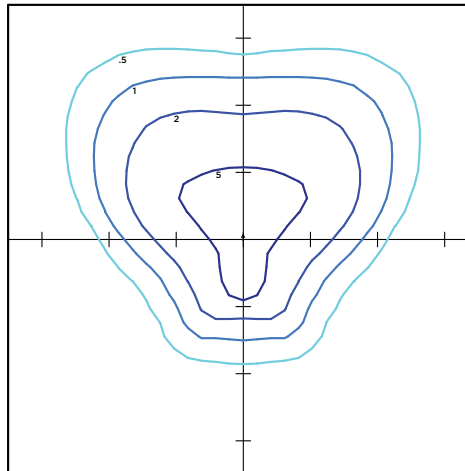
#### LUMINAIRE DATA

Type FT Distribution	
Description	4000 Kelvin, 70 CRI
Delivered Lumens	31,921
Watts	232
Efficacy	138
IES Type	Type IV - Short
BUG Rating	B4-U0-G4

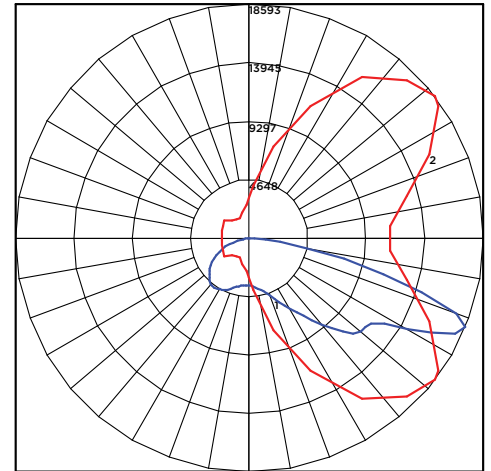
#### Zonal Lumen Summary

Zone	Lumens	%Luminaire
Low (0-30)°	3874	12%
Medium (30-60)°	15694	49%
High (60-80)°	11696	37%
Very High (80-90)°	657	2%
Uplight (90-180)°	0	0%
Total Flux	31921	100%

#### ISO FOOTCANDLE



#### POLAR CURVE



25' Mounting Height/ 25' Grid Spacing  
 ■ 5 FC ■ 2 FC ■ 1 FC ■ 0.5 FC





# Slice Medium Outdoor LED Area Light

## PHOTOMETRICS (CONT.)

### SLM-LED-30L-SIL-5W-40-70CRI

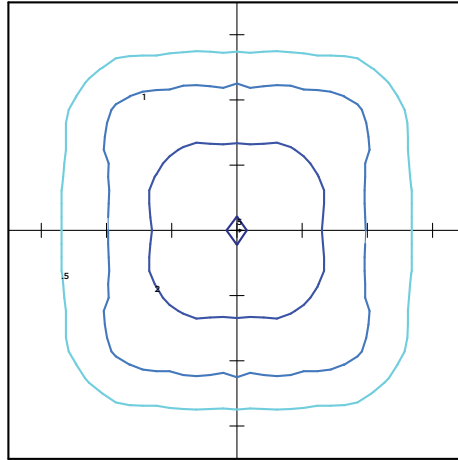
#### LUMINAIRE DATA

Type 5W Distribution	
Description	4000 Kelvin, 70 CRI
Delivered Lumens	31,237
Watts	232
Efficacy	135
IES Type	Type IV - Short
BUG Rating	B5-U0-G3

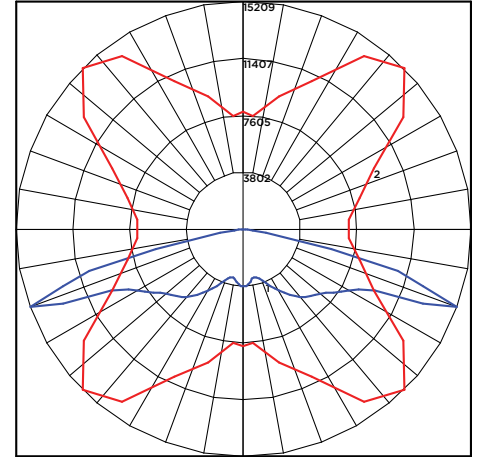
#### Zonal Lumen Summary

Zone	Lumens	%Luminaire
Low (0-30)°	3186	10%
Medium (30-60)°	13594	44%
High (60-80)°	14195	45%
Very High (80-90)°	261	1%
Uplight (90-180)°	0	0%
Total Flux	31237	100%

#### ISO FOOTCANDLE



#### POLAR CURVE



25' Mounting Height/ 25' Grid Spacing

5 FC
  2 FC
  1 FC
  0.5 FC

### SLM-LED-30L-SIL-FTA-40-70CRI

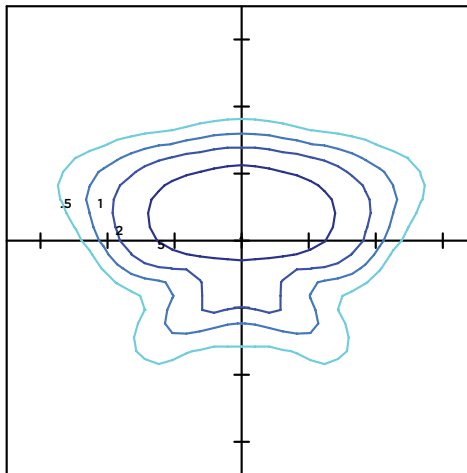
#### LUMINAIRE DATA

Type FTA Distribution	
Description	4000 Kelvin, 70 CRI
Delivered Lumens	32,146
Watts	232
Efficacy	139
IES Type	Type I - Very Short
BUG Rating	B4-U0-G3

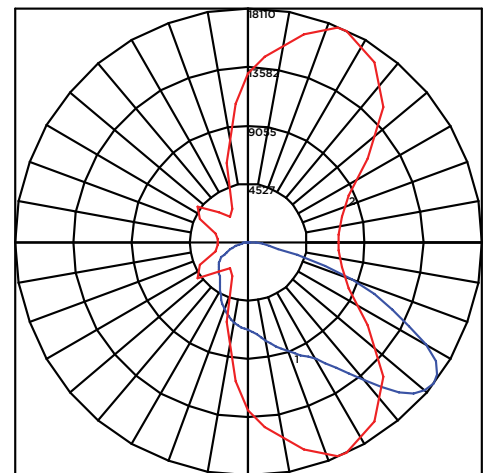
#### Zonal Lumen Summary

Zone	Lumens	%Luminaire
Low (0-30)°	7371	23%
Medium (30-60)°	18710	58%
High (60-80)°	5624	17%
Very High (80-90)°	441	1%
Uplight (90-180)°	0	0%
Total Flux	32146	100%

#### ISO FOOTCANDLE



#### POLAR CURVE



25' Mounting Height/ 25' Grid Spacing

5 FC
  2 FC
  1 FC
  0.5 FC





# Slice Medium Outdoor LED Area Light

## PHOTOMETRICS (CONT.)

SLM-LED-30L-SIL-AM-40-70CRI

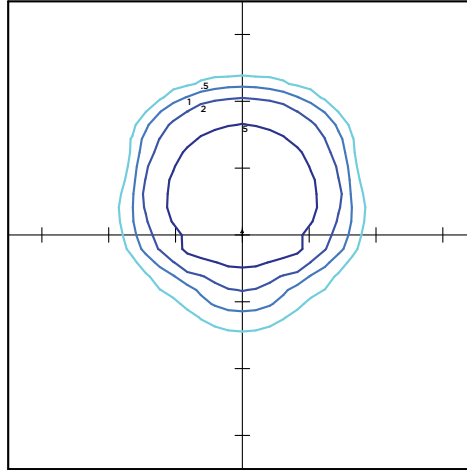
### LUMINAIRE DATA

Type AM Distribution	
Description	4000 Kelvin, 70 CRI
Delivered Lumens	32,543
Watts	232
Efficacy	140
IES Type	Type III - Very Short
BUG Rating	B4-U0-G3

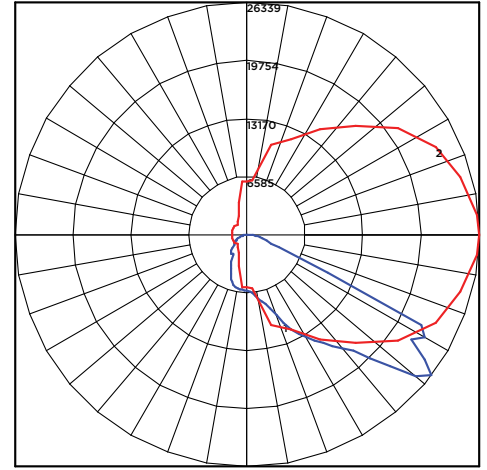
### Zonal Lumen Summary

Zone	Lumens	%Luminaire
Low (0-30)°	6390	9%
Medium (30-60)°	20951	43%
High (60-80)°	4838	48%
Very High (80-90)°	365	1%
Uplight (90-180)°	0	0%
Total Flux	32543	100%

### ISO FOOTCANDLE



### POLAR CURVE

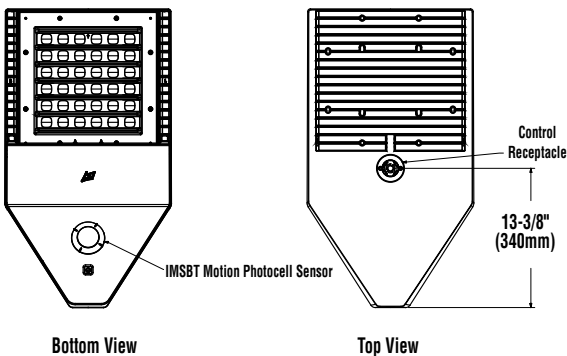
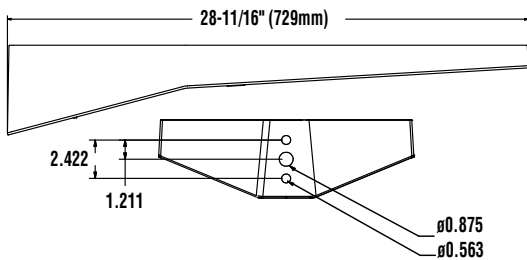
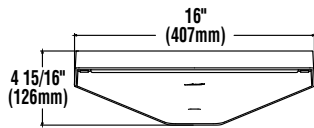


25' Mounting Height/ 25' Grid Spacing

5 FC
  2 FC
  1 FC
  0.5 FC

## PRODUCT DIMENSIONS

[Back to Quick Links](#)



Tilt Degree	0°	30°	45°	Tilt Degree	0°	30°	45°
Single	0.5	2.1	2.6	T90°	1.2	2.9	3.6
D180°	1.1	2.1	2.6	TN120°	1.3	4.4	5.4
D90°	0.9	2.5	3.1	Q90°	1.2	2.9	3.6



# Slice Medium Outdoor LED Area Light

## CONTROLS

### AirLink Wireless Lighting Controller

The AirLink integrated controller is a California Title 24 compliant lighting controller that provides real-time light monitoring and control with utility-grade power monitoring. It includes a 24V sensor input and power supply to connect a sensor into the outdoor AirLink wireless lighting system.

The wireless integrated controller is compatible with this fixture.

Click the link below to learn more details about AirLink.

<https://www.lsicorp.com/documents/datasheets/airlink-outdoor-specsheet.pdf>

### Integral Bluetooth™ Motion and Photocell Sensor (IMSBT)

Slim low profile sensor provides multi-level control based on motion and/or daylight. Sensor controls 0-10 VDC LED drivers and is rated for cold and wet locations (-30° C to 70° C). Two unique PIR lenses are available and used based on fixture mounting height. All control parameters are adjustable via an iOS or Android App capable of storing and transmitting sensor profiles.

Click the link below to learn more details about IMSBT.

<https://www.lsicorp.com/documents/datasheets/imsbt-specsheet.pdf>

### AirLink Blue

Wireless Bluetooth Mesh Outdoor Lighting Control System that provides energy savings, code compliance and enhanced safety/security for parking lots and parking garages. Three key components; Bluetooth wireless radio/sensor controller, Time Keeper and an iOS App. Capable of grouping multiple fixtures and sensors as well as scheduling time-based events by zone. Radio/Sensor Controller is factory integrated into Area/Site, Wall Mounted, Parking Garage and Canopy luminaires.

Click the link below to learn more details about AirLink Blue.

<https://www.lsi-airlink.com/airlink-blue/>

## POLES & BRACKETS

LSI offers a full line of poles and mounting accessories to complete your lighting assembly. Aluminum and steel in both square and round shafts. In addition, LSI offers round tapered, fluted and hinge based poles. Designed and engineered for durability and protected with our oven baked DuraGrip Protection System. Also available with our DuraGrip+ Protection system for unmatched corrosion resistance and an extended warranty. American made in our Ohio facility with industry leading lead times.

Click the link below to learn more details about poles & brackets.

<https://www.lsicorp.com/products/poles-and-brackets-area-street.aspx>



#### BKA UMB CLR

The 3G rated UMB allows for seamless integration of LSI luminaires onto existing/ retrofit or new construction poles. The UMB was designed for square or round (tapered or straight) poles with two mounting hole spacings between 3.5" - 5".



#### BKA ASF CLR

The adjustable Slip Fitter is a 3G rated rugged die cast aluminum adapter to mount LSI luminaires onto a 2" iron pipe, 2 3/8 OD tenon. The Adjustable Slip Fitter can be rotated 180° allowing for tilting LSI luminaires up to 45° and 90° when using a vertical tenon.



#### BKS PQM15 CLR

The Pole Quick Mount Bracket allows for preset 15° uptilt of LSI luminaires for greater throw of light and increased vertical illumination as well as fast installation onto poles with LSI's 3" or 5" bolt pattern.



#### BKS PQMH CLR

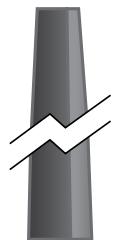
The Pole Quick Mount Bracket allows for lightning fast installation of LSI luminaires onto existing and new construction poles with LSI's B3 or B5 standard pole bolt patterns.



Square Pole  
14'-39'



Round Pole  
10'-30'



Tapered Pole  
20'-39'





Catalog # : \_\_\_\_\_ Project : \_\_\_\_\_

Prepared By : \_\_\_\_\_ Date : \_\_\_\_\_

# Mirada Wall Sconce (XWM)

## Outdoor LED Wall Sconce



### OVERVIEW

Lumen Range	3,000 - 12,000
Wattage Range	23 - 102
Efficacy Range (LPW)	107 - 140
Weight lbs(kg)	30 (13.6)

### QUICK LINKS

[Ordering Guide](#)
[Performance](#)
[Photometrics](#)
[Dimensions](#)

## FEATURES & SPECIFICATIONS

### Construction

- Rugged die-cast aluminum housing contains factory prewired driver and optical unit. Hinged die-cast aluminum wiring access door located underneath.
- Galvanized-steel universal wall mount bracket comes standard with hinging mechanism to easily access the junction box wire connections without removing the luminaire.
- Optional pole-mounting bracket (XPMa) permits mounting to standard poles.
- Fixtures are finished with LSI's DuraGrip<sup>®</sup> polyester powder coat finishing process. The DuraGrip finish withstands extreme weather changes without cracking or peeling. Other standard LSI finishes available. Consult factory.
- Shipping weight: 30 lbs in carton.

### Optical System

- State-of-the-Art one piece silicone optic sheet delivers industry leading optical control with an integrated gasket to provide IP65 rated sealed optical chamber in 1 component.
- Proprietary silicone refractor optics provide exceptional coverage and uniformity in Types 2, 3, and Forward Throw (FT) distributions.
- Silicone optical material does not yellow or crack with age and provides a typical light transmittance of 93%.
- Zero uplight.
- Available in 5000K, 4000K and 3000K color temperatures per ANSI C78.377.
- Minimum CRI of 70.

### Electrical

- High-performance driver features over-voltage, under-voltage, short-circuit and over temperature protection.
- 0-10V dimming (10% - 100%) standard.
- Standard Universal Voltage (120-277 Vac) Input 50/60 Hz or optional High Voltage (347-480 Vac).
- L80 Calculated Life: >100k Hours
- Total harmonic distortion: <20%
- Operating temperature: -40°C to +50°C (-40°F to +122°F).
- Power factor: >.90
- Input power stays constant over life.
- Optional 10kV surge protection device meets a minimum Category C Low operation (per ANSI/IEEE C62.41.2).
- High-efficacy LEDs mounted to metal-core circuit board to maximize heat dissipation
- Components are fully encased in potting material for moisture resistance. Driver complies with FCC standards. Driver and key electronic components can easily be accessed via hinged door.
- Optional integral emergency battery pack provides 90-minutes of constant power to the LED system, ensuring code compliance. A test switch/indicator button is installed on the housing for ease of maintenance. The fixture delivers 1500 lumens during emergency mode.

### Controls

- Optional integral passive infrared Bluetooth<sup>™</sup> motion and photocell sensor (see page 5 for more details). Fixtures operate independently and can be commissioned via iOS or Android configuration app

- LSI's AirLink<sup>™</sup> wireless control system options reduce energy and maintenance costs while optimizing light quality 24/7. (see page 5 for more details).

### Installation

- Universal wall mounting plate easily mounts directly to 4" octagonal or square junction box.
- 2 fasteners secure the hinged door underneath the housing and provide quick & easy access to the electrical compartment for installing/servicing.
- Optional terminal block accepts up to 12 ga wire.

### Warranty

- LSI LED Fixtures carry a 5-year warranty.
- 1 Year warranty on Battery Back-up option.

### Listings

- Listed to UL 1598 and UL 8750.
- Meets Buy American Act requirements.
- IDA compliant; with 3000K or lower color temperature selection.
- State of California Title 24 Compliant
- Suitable for wet Locations.
- IP65 rated luminaire per IEC 60598.
- 3G rated for ANSI C136.31 high vibration applications when pole mounted (using optional XPMa bracket) or wall mounted.
- DesignLights Consortium<sup>®</sup> (DLC) qualified product. Not all versions of this product may be DLC qualified. Please check the DLC Qualified Products List at [www.designlights.org/QPL](http://www.designlights.org/QPL) to confirm which versions are qualified.





# Mirada Wall Sconce (XWM)

## ORDERING GUIDE

[Back to Quick Links](#)

TYPICAL ORDER EXAMPLE: **XWM 2 LED 03L 27 UE BRZ ALSC**

Luminaire Prefix	Distribution	LED Technology	Lumen Package	Color Temperature	Voltage
<b>XWM</b> - Mirada Wall Sconce	2 - Type 2 3 - Type 3 FT - Type 4 Forward Throw	<b>LED</b>	3L - 3,000 lms 4L - 4,000 lms 6L - 6,000 lms 8L - 8,000 lms 12L - 12,000 lms	30 - 3000K 40 - 4000K 50 - 5000K	<b>UE</b> - Universal Voltage (120-277V) <b>HV</b> - High Voltage (347-480V)

Finish	Controls (Choose One)	Options
<b>BRZ</b> - Bronze <b>BLK</b> - Black <b>GPT</b> - Graphite <b>MSV</b> - Metallic Silver <b>WHT</b> - White <b>PLP</b> - Platinum Plus <b>SVG</b> - Satin Verde Green	<b>Wireless Controls</b> <b>ALSC</b> - Airlink Synapse Control System <sup>1</sup> <b>ALSCS01</b> - AirLink Synapse Control System with 8-12' Motion Sensor <sup>1</sup> <b>ALSCS02</b> - AirLink Synapse Control System with 12-20' Motion Sensor <sup>1</sup> <b>ALBCS1</b> - AirLink Blue Wireless Motion & Photo Sensor Controller (8-24' mounting height) <sup>1</sup> <b>ALBCS2</b> - AirLink Blue Wireless Motion & Photo Sensor Controller (25-40' mounting height) <sup>1</sup> <b>Standalone Controls</b> <b>CR7P</b> - 7 Pin Control Receptacle ANSI C136.41 <sup>7</sup> <b>DIM</b> - 0-10v Dimming leads extended to housing exterior <b>IMSBT1</b> - Integral Bluetooth™ Motion and Photocell Sensor max 8-24' mounting height <sup>1,3</sup> <b>IMSBT2</b> - Integral Bluetooth Motion and Photocell Sensor max 25-40' mounting height <sup>1,3</sup> <b>Button Type Photocells</b> <b>PCI120</b> - 120V <b>PCI208-277</b> - 208 -277V <b>PCI347</b> - 347V <b>Lutron Limelight Controls</b> <b>LLC</b> - LimeLight Integral Wireless Radio Control by Lutron <sup>1</sup> <b>LLCS1</b> - Limelight Integral Wireless Radio Control and PIR Motion/ Daylight Sensor by Lutron 8-15' mt height <sup>1</sup> <b>LLCS2</b> - Limelight Integral Wireless Radio Control and PIR Motion/Daylight Sensor by Lutron 16-30' mt height <sup>1</sup> <b>LLCS3</b> - Limelight Integral Wireless Radio Control and PIR Motion/Daylight Sensor by Lutron 31-40' mt height <sup>1</sup>	<b>BB</b> - Battery Back-up <sup>5</sup> <b>CWBB</b> - Cold Weather Battery Backup <sup>5</sup> <b>XPMA</b> - Pole Mounting Bracket <b>SP1</b> - 10kV Surge Protection <b>TB</b> - Terminal Block

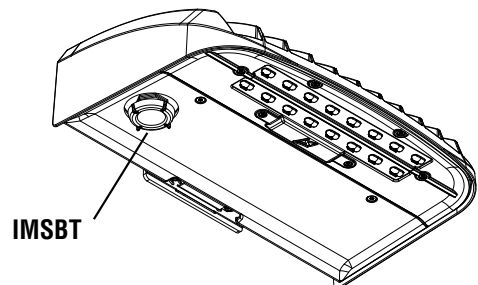
## ACCESSORY ORDERING INFORMATION

Description	Order Number	Description	Order Number
XWM SW BLK - Surface Wiring Box (Available in black only)	356915BLK	DFK - Double Fusing	DFK208 <sup>6</sup>
FK120 - Single Fusing	FK120 <sup>6</sup>	DFK - Double Fusing (240V)	DFK240 <sup>6</sup>
FK277 - Single Fusing	FK277 <sup>6</sup>	DFK - Double Fusing (480V)	DFK480 <sup>6</sup>
FK347 - Single Fusing	FK347 <sup>6</sup>		
Twist Lock Photocell (120V) for use with CR7P	122514	AirLink 5 Pin Twist Loc Controller	661409
Twist Lock Photocell (208-277V) for use with CR7P	122515	AirLink 5 Pin Twist Loc Controller	661410
Twist Lock Photocell (347V) for use with CR7P	122516	Shorting Cap for use with CR7P	149328
Twist Lock Photocell (480V) for use with CR7P	1225180		

### FOOTNOTES:

1. Consult Factory for availability.
2. Not available in HV.
3. Consult Factory for Site Layout.
4. IMSBT is field configurable via the LSI app that can be downloaded from your smartphone's native app store.
5. Not available in UE.
6. Fusing must be located in a hand hole for pole or in the junction box.
7. Control device or shorting cap must be ordered separately. See Accessory Ordering Information.

Luminaire Shown with IMSBT





## PERFORMANCE

[Back to Quick Links](#)

DELIVERED LUMENS*												
Lumen Package	Distribution	CRI	3000K			4000K			5000K			Wattage
			Delivered Lumens	Efficacy	BUG Rating	Delivered Lumens	Efficacy	BUG Rating	Delivered Lumens	Efficacy	BUG Rating	
03L	2	70	2822	125	B1-U0-G1	3088	137	B1-U0-G1	3088	137	B1-U0-G1	22.6
	3	70	2873	127	B1-U0-G1	3144	139	B1-U0-G1	3144	139	B1-U0-G1	
	FT	70	2838	126	B1-U0-G1	3105	137	B1-U0-G1	3105	137	B1-U0-G1	
04L	2	70	3702	125	B1-U0-G1	4051	137	B1-U0-G1	4051	137	B1-U0-G1	29.5
	3	70	3769	128	B1-U0-G1	4124	140	B1-U0-G1	4124	140	B1-U0-G1	
	FT	70	3722	126	B1-U0-G1	4073	138	B1-U0-G1	4073	138	B1-U0-G1	
06L	2	70	5506	123	B2-U0-G2	6025	135	B2-U0-G2	6025	135	B2-U0-G2	44.7
	3	70	5606	125	B1-U0-G1	6134	137	B1-U0-G2	6134	137	B1-U0-G2	
	FT	70	5536	124	B1-U0-G2	6058	136	B1-U0-G2	6058	136	B1-U0-G2	
08L	2	70	7304	118	B2-U0-G2	7993	129	B2-U0-G2	7993	129	B2-U0-G2	62.0
	3	70	7437	120	B1-U0-G2	8138	131	B2-U0-G2	8138	131	B2-U0-G2	
	FT	70	7345	118	B2-U0-G2	8037	130	B2-U0-G2	8037	130	B2-U0-G2	
12L	2	70	10979	107	B3-U0-G3	12014	118	B3-U0-G3	12014	118	B3-U0-G3	102.2
	3	70	11178	109	B2-U0-G2	12232	120	B2-U0-G2	12232	120	B2-U0-G2	
	FT	70	11040	108	B2-U0-G3	12080	118	B2-U0-G3	12080	118	B2-U0-G3	

\*LEDs are frequently updated therefore values are nominal.

ELECTRICAL DATA*							
Lumen Package	Watts	120V	208V	240V	277V	347V	480V
03L	22.6	0.19	0.11	0.09	0.08	0.07	0.05
04L	29.5	0.25	0.14	0.12	0.11	0.09	0.06
06L	44.7	0.37	0.21	0.19	0.16	0.13	0.09
08L	62.0	0.52	0.30	0.26	0.22	0.18	0.13
12L	102.2	0.85	0.49	0.43	0.37	0.29	0.21

\*Electrical data at 25C (77F). Actual wattage may differ by +/-10%.

RECOMMENDED LUMEN MAINTENANCE (3L-6L) <sup>1</sup>					
Ambient Temperature C	Initial <sup>2</sup>	25K hrs. <sup>2</sup>	50K hrs. <sup>3</sup>	75K hrs. <sup>3</sup>	100K hrs. <sup>3</sup>
0 C	100%	98%	95%	93%	90%
10 C	100%	98%	95%	93%	90%
20 C	100%	98%	95%	93%	90%
25 C	100%	98%	95%	93%	90%
30 C	100%	98%	95%	93%	90%
40 C	100%	98%	95%	93%	90%
50 C	100%	98%	96%	94%	91%

RECOMMENDED LUMEN MAINTENANCE (8L-12L) <sup>1</sup>					
Ambient Temperature C	Initial <sup>2</sup>	25K hrs. <sup>2</sup>	50K hrs. <sup>3</sup>	75K hrs. <sup>3</sup>	100K hrs. <sup>3</sup>
0 C	100%	97%	94%	90%	87%
10 C	100%	97%	94%	90%	87%
20 C	100%	97%	94%	90%	87%
25 C	100%	97%	93%	90%	86%
30 C	100%	97%	93%	90%	85%
40 C	100%	97%	93%	88%	84%
50 C	100%	96%	91%	87%	83%

- 1 - Lumen maintenance values at 25C are calculated per TM-21 based on LM-80 data and in-situ testing.
- 2 - In accordance with IESNA TM-21-11, Projected Values represent interpolated value based on time durations that are within six times the IESNA LM-80-08 total test duration for the device under testing.
- 3 - Lumen maintenance values at 25C are calculated per TM-21 based on LM-80 data and in-situ testing times the IESNA LM-80-08 total test duration for the device under testing





## PHOTOMETRICS

[Back to Quick Links](#)

All published luminaire photometric testing performed to IESNA LM-79 standards. ISO footcandle plots below demonstrate the Mirada Wall Sconce (XWM) light patterns only. Not for total fixture output. For complete specifications and IES files, see website.

### XWM-2-LED-6L-40

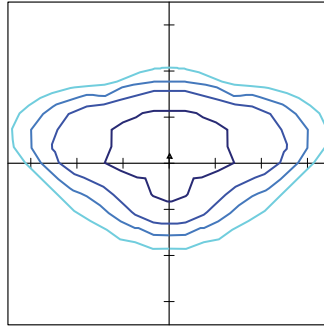
#### LUMINAIRE DATA

Type 2 Distribution	
Description	4000 Kelvin, 70 CRI
Delivered Lumens	6,025
Watts	44.7
Efficacy	135
IES Type	Type III - Medium
BUG Rating	B2-U0-G2

#### Zonal Lumen Summary

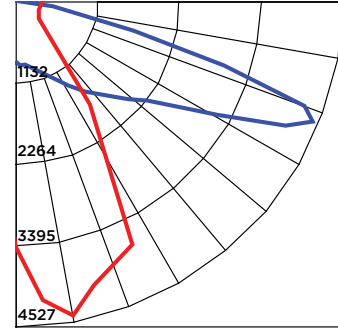
Zone	Lumens	%Luminaire
Low (0-30)°	807.1	13.4%
Medium (30-60)°	3301.0	54.8%
High (60-80)°	1847.4	30.7%
Very High (80-90)°	69.2	1.1%
Uplight (90-180)°	0.0	0.0%
Total Flux	6024.7	100%

#### ISO FOOTCANDLE PLOT



15' Mounting Height / 10' Grid Spacing  
 5 FC 2 FC 1 FC 0.5 FC

#### POLAR CURVE



### XWM-3-LED-6L-40

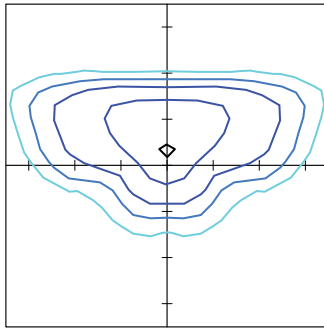
#### LUMINAIRE DATA

Type 3 Distribution	
Description	4000 Kelvin, 70 CRI
Delivered Lumens	6,133
Watts	44.7
Efficacy	137
IES Type	Type III - Medium
BUG Rating	B1-U0-G2

#### Zonal Lumen Summary

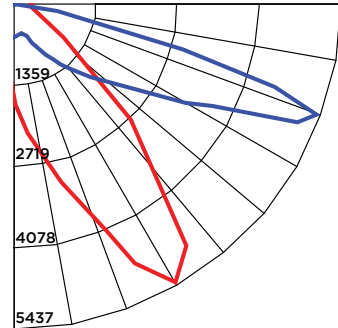
Zone	Lumens	%Luminaire
Low (0-30)°	567.4	9.3%
Medium (30-60)°	3106.3	50.6%
High (60-80)°	2368.8	38.6%
Very High (80-90)°	90.7	1.5%
Uplight (90-180)°	0.0	0.0%
Total Flux	6133.2	100%

#### ISO FOOTCANDLE PLOT



10' Mounting Height / 10' Grid Spacing  
 5 FC 2 FC 1 FC 0.5 FC

#### POLAR CURVE



### XWM-FT-LED-6L-40

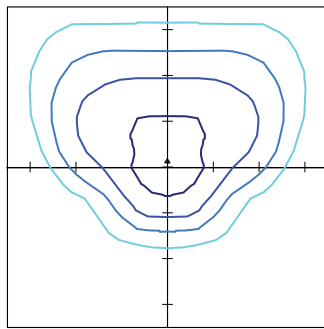
#### LUMINAIRE DATA

Type FT Distribution	
Description	4000 Kelvin, 70 CRI
Delivered Lumens	6,058
Watts	44.7
Efficacy	136
IES Type	Type IV - Short
BUG Rating	B1-U0-G2

#### Zonal Lumen Summary

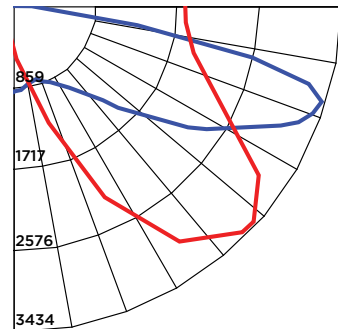
Zone	Lumens	%Luminaire
Low (0-30)°	779.0	12.9%
Medium (30-60)°	2584.4	42.7%
High (60-80)°	2523.2	41.7%
Very High (80-90)°	170.8	2.8%
Uplight (90-180)°	0.0	0.0%
Total Flux	6057.4	100.0%

#### ISO FOOTCANDLE PLOT



10' Mounting Height / 10' Grid Spacing  
 5 FC 2 FC 1 FC 0.5 FC

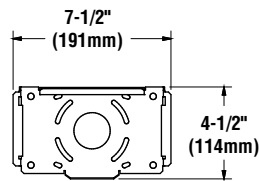
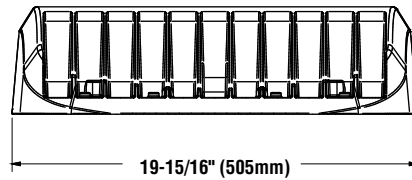
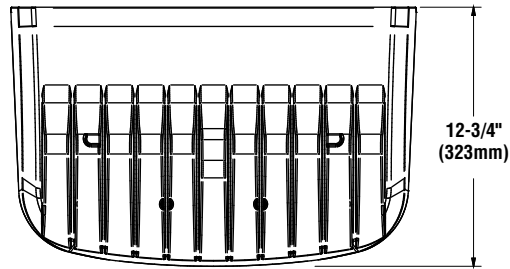
#### POLAR CURVE





## PRODUCT DIMENSIONS

[Back to Quick Links](#)





## CONTROLS

---

### **AirLink Wireless Lighting Controller**

The AirLink integrated controller is a California Title 24 compliant lighting controller that provides real-time light monitoring and control with utility-grade power monitoring. It includes a 24V sensor input and power supply to connect a sensor into the outdoor AirLink wireless lighting system.

The wireless integrated controller is compatible with this fixture.

Click the link below to learn more details about AirLink.

<https://www.lsi-industries.com/documents/datasheets/airlink-outdoor-specsheet.pdf>

### **Integral Bluetooth™ Motion and Photocell Sensor (IMSBT)**

Slim low profile sensor provides multi-level control based on motion and/or daylight. Sensor controls 0-10 VDC LED drivers and is rated for cold and wet locations (-30° C to 70° C). Two unique PIR lenses are available and used based on fixture mounting height. All control parameters are adjustable via an iOS or Android App capable of storing and transmitting sensor profiles.

Click the link below to learn more details about IMSBT.

<https://www.lsi-industries.com/documents/datasheets/imsbt-specsheet.pdf>

### **AirLink Blue**

Wireless Bluetooth Mesh Outdoor Lighting Control System that provides energy savings, code compliance and enhanced safety/security for parking lots and parking garages. Three key components; Bluetooth wireless radio/sensor controller, Time Keeper and an iOS App. Capable of grouping multiple fixtures and sensors as well as scheduling time-based events by zone. Radio/Sensor Controller is factory integrated into Area/Site, Wall Mounted, Parking Garage and Canopy luminaires.

Click the link below to learn more details about AirLink Blue.

<https://www.lsi-airlink.com/airlink-blue/>

