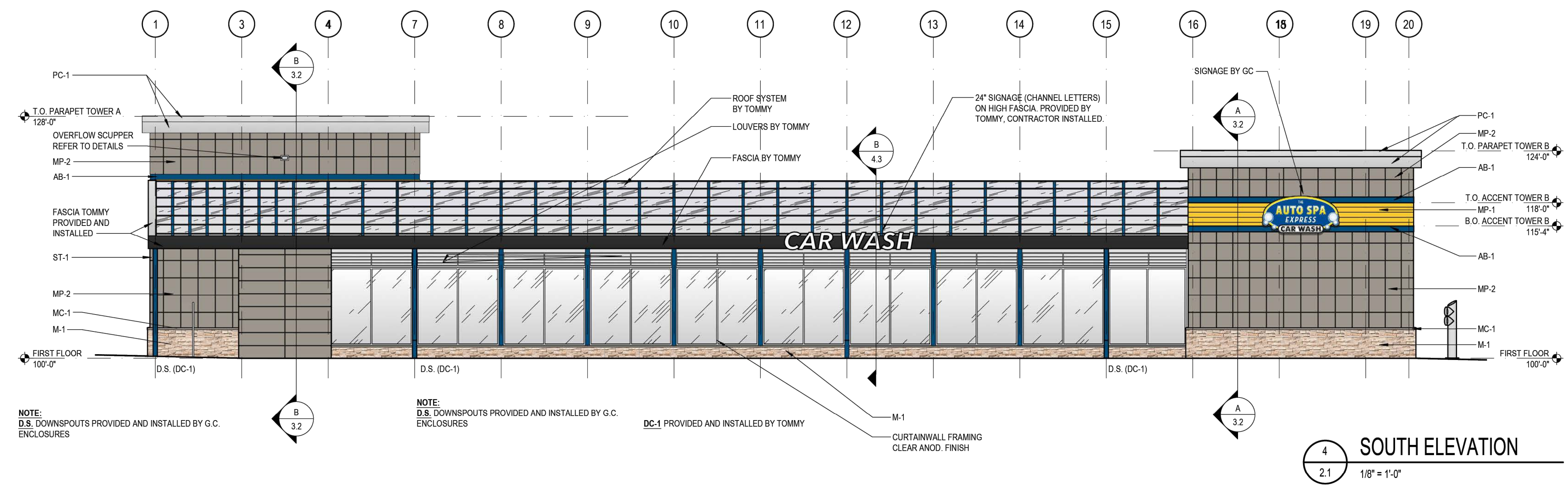


PROFESSIONAL CERTIFICATION:  
I CERTIFY THAT THESE DOCUMENTS WERE PREPARED OR APPROVED BY ME, & THAT I AM A DULY LICENSED ARCHITECT UNDER THE LAWS OF THE STATE OF MARYLAND. LICENSE #12116, EXPIRATION DATE 4-29-25.

**EXTERIOR MATERIALS LEGEND**

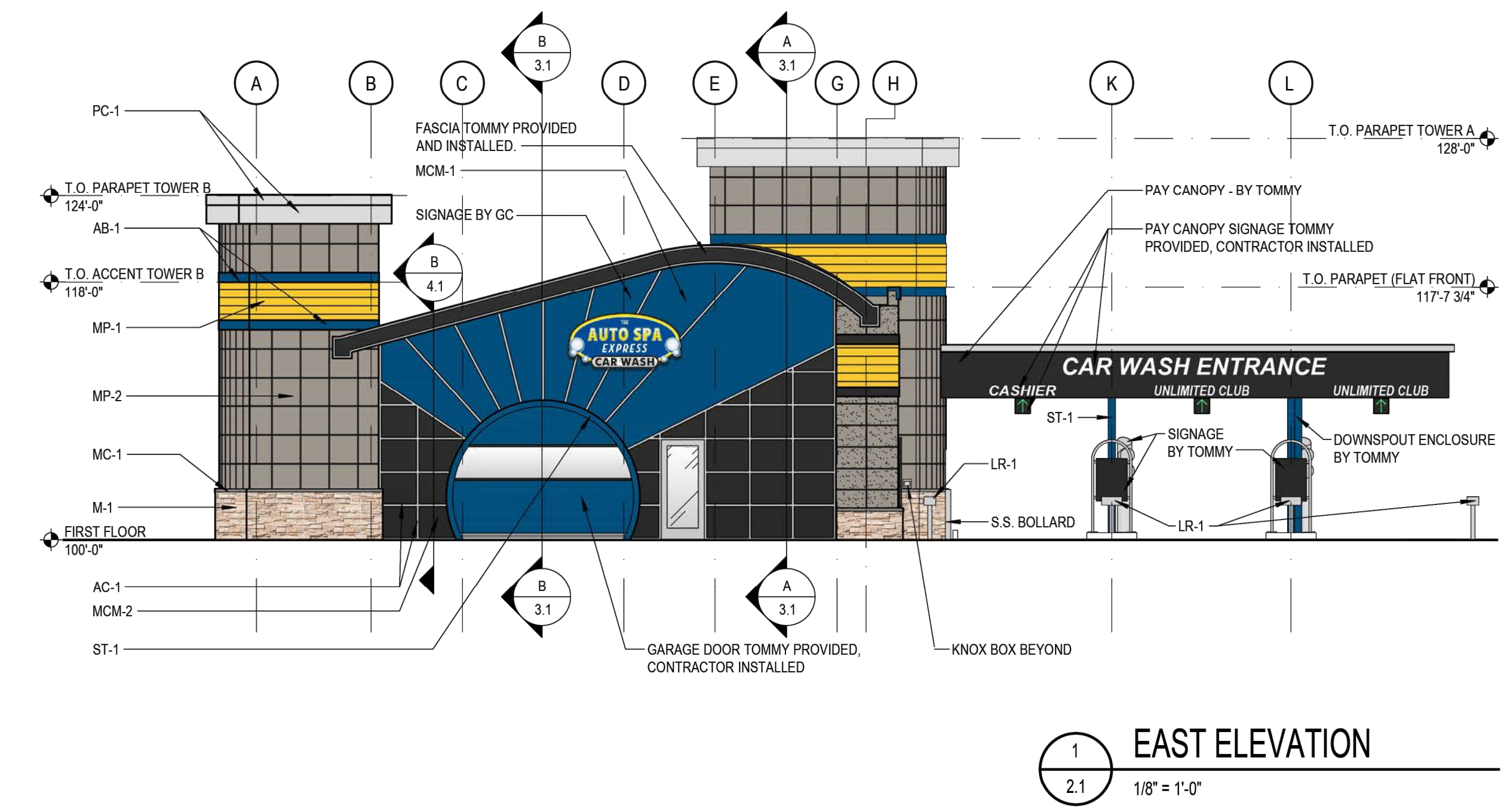
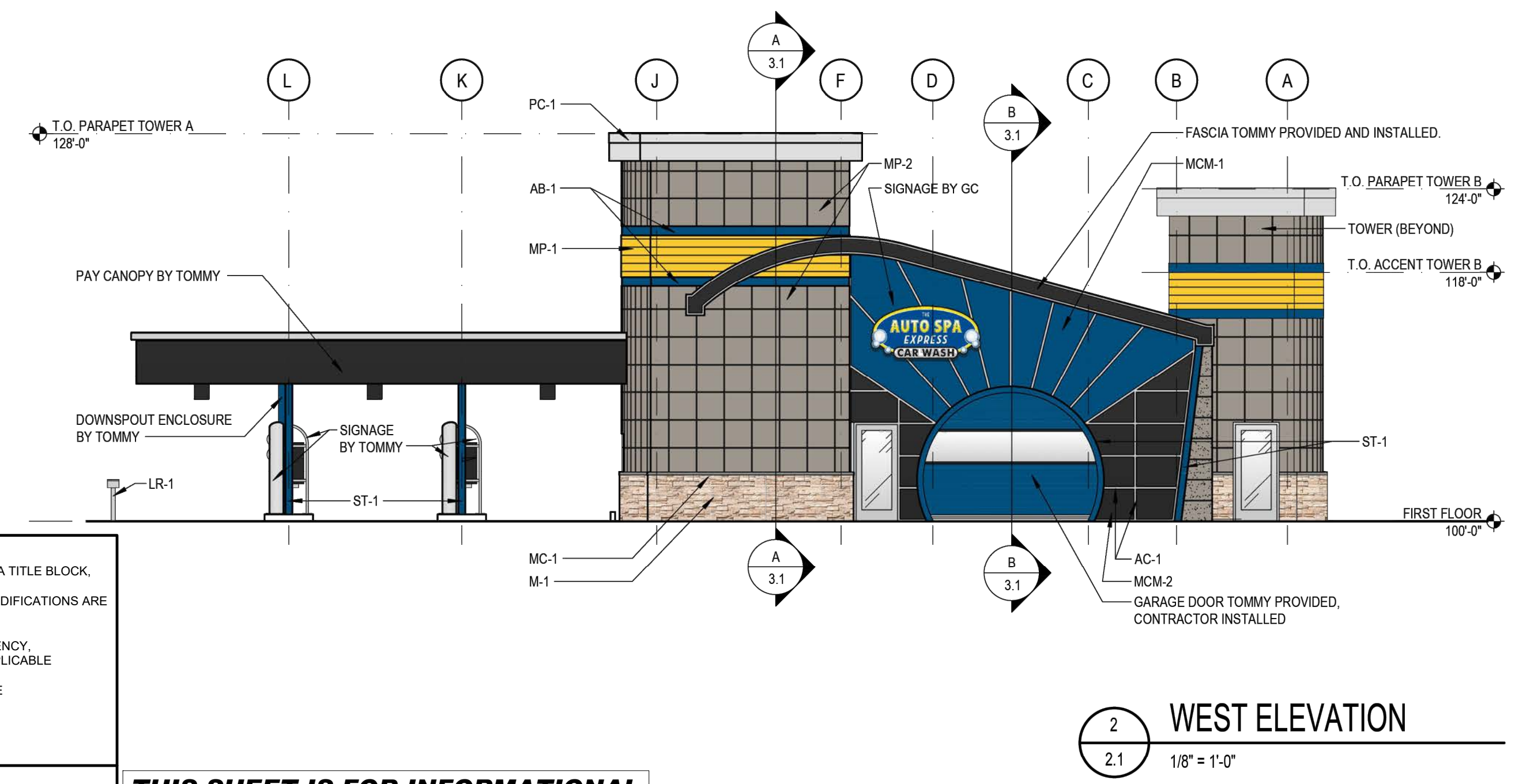
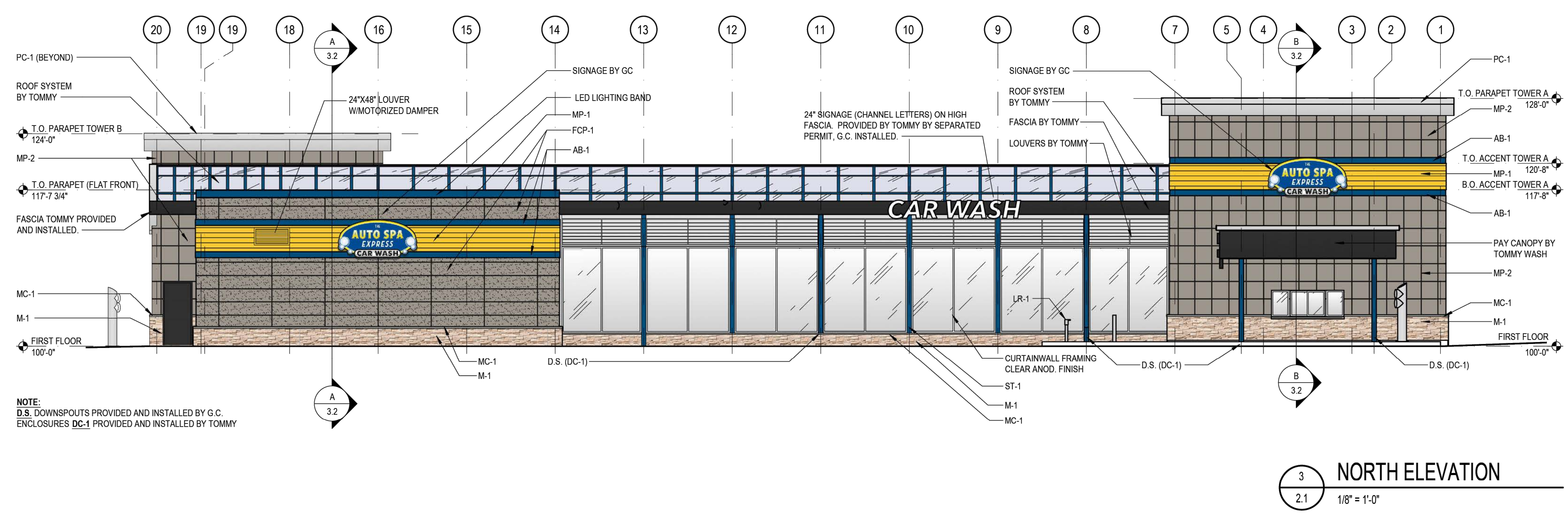
	PREFINISHED METAL PANELS
	CEMENT BOARD PANEL
	PREFINISHED METAL COPING
	ALUM. FLAT STOCK (RAL 5010)
	CORRUGATED METAL PANEL
	MCM PANEL (BLACK)
	GLAZING
	CULTURED STONE VENEER



**EXTERIOR MATERIALS SPECS**

TAG	MATERIAL	MFR.	DESCRIPTION	COLOR
ST-1	STRUCTURAL STEEL	R.B.1		RAL 5010
MP-1	PROFILLED ALUMINUM METAL PANEL	ATAS	ATAS 7.2 BWR360 BELVEDERE	RAL 1018
MP-2	PREFINISHED METAL PANEL	DRI-DESIGN	30"x30" PANEL SIZE	CADET GREY
AB-1	PREFIN. ALUM. ACCENT BANDING	ATAS	ATAS FLAT SHEET	RAL 5010
PC-1	PREFIN. ALUM. PARAPET CORNICE	REYNOLUX		BRIGHT SILVER METALLIC
M-1	STONE VENEER	BORAL	PRO-FIT LEDGESTONE	SOUTHWEST BLEND
MC-1	PRECAST STONE SILL	ELDORADO	CHISELED EDGE WALL CAP	SMOKE
FCP-1	ARCHITECTURAL BLOCK	NICHHA	FIBER CEMENT PANELS 18" H x 72" W	GRAY
MCM-1	PREFIN. ALUM. COMPOSITE PANELS	LAMINATORS	LAMINATORS OMEGA SERIES	RAL 5010
MCM-2	PREFIN. ALUM. COMPOSITE PANELS	CITADEL	GLAZE GUARD (SERIES F)	EBONY
AC-1	PREFIN. ALUM. CLOSURE CAPS	TUBELITE	TUBELITE 200 SERIES CURTAINWALL	CLEAR ANNOIDIZED
SF01	INSULATED GLASS		1" INSULATED GLASS LOW-E	CLEAR
SF02				
SF03				
SF04	METAL PANEL INFILL		1" MCM PANEL INFILL	BLACK
SF05				
DC-1	PREFINISHED ALUMINUM		DOWNSPOUT COVER	RAL 5010
LR-1	LICENSE PLATE READER	TOMMY	BOLLARD	STAINLESS STEEL

NOTE: GENERAL CONTRACTOR TO SUPPLY ALL MATERIALS/EQUIPMENT EXCEPT ST-1, DC-1 & LR-1 TO BE SUPPLIED BY TOMMY.



**NOTES REGARDING DETAILS BY OTHERS:**  
1. DETAILS PREPARED BY OTHERS ARE IDENTIFIED AS SUCH BY WAY OF A TITLE BLOCK, REFERENCE, LOGO, OR OTHER NOTATION.  
2. WHERE AN ORIGINAL DETAIL BY OTHERS HAS BEEN MODIFIED, THE MODIFICATIONS ARE IDENTIFIED BY REVISION CLOUDS.  
3. REFER TO OUTSIDE SOURCE NOTES ON SHEET C-102.  
4. WHEN THE SOURCE OF THE DETAIL IS A REVIEWING/REGULATORY AGENCY, FABRICATION AND INSTALLATION SHALL BE IN ACCORDANCE WITH APPLICABLE REQUIREMENTS AND SPECIFICATIONS.  
5. WHEN APPROPRIATE, SHOP DRAWINGS SHALL BE FORWARDED TO THE REVIEWING/REGULATORY AGENCY PRIOR TO FABRICATION.

**THIS SHEET IS FOR INFORMATIONAL PURPOSES ONLY.**

**DETAILS BY OTHERS DISCLAIMER**

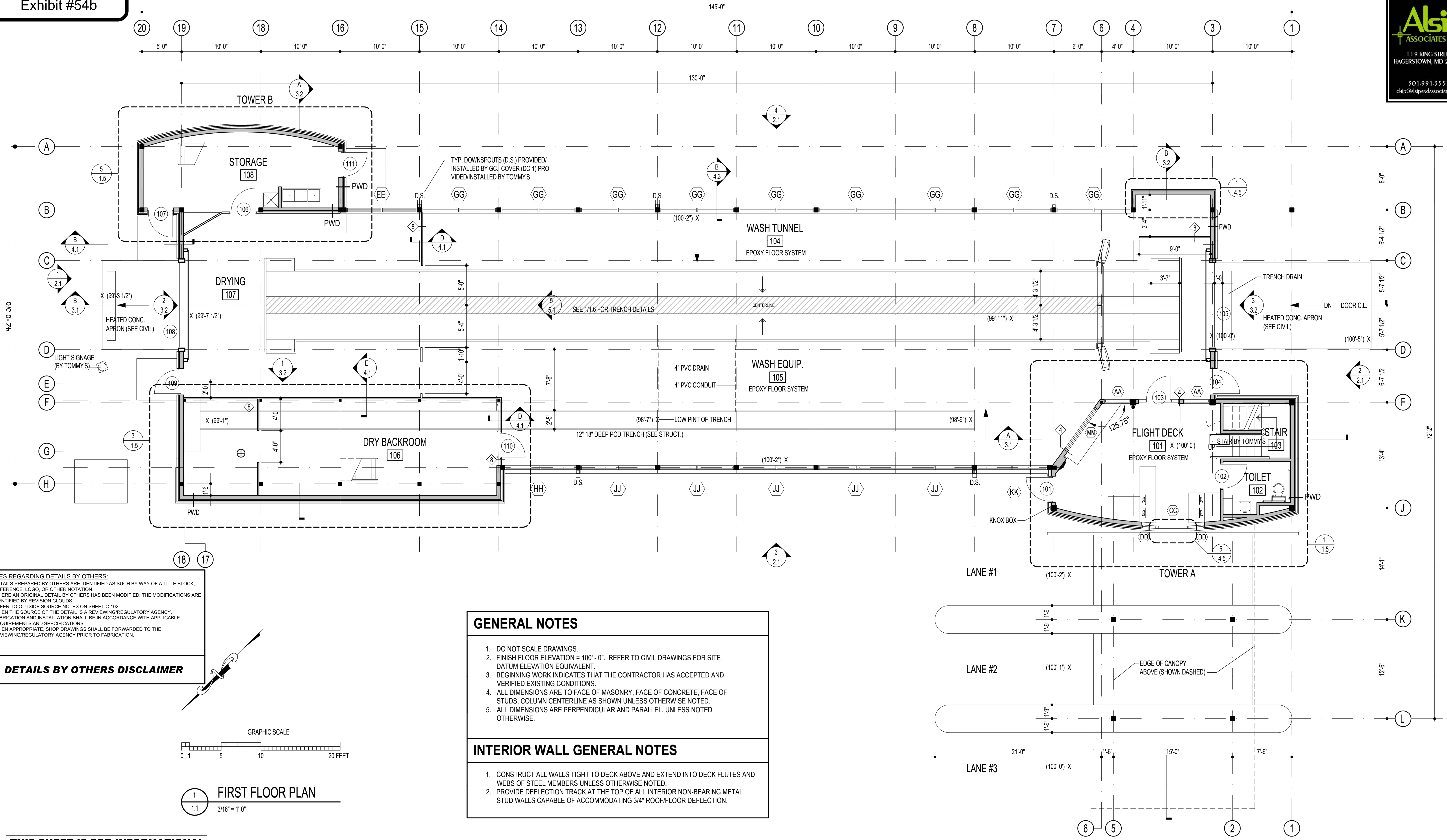
A+A Project #240210  
New Car Wash Facility  
**AUTO SPA EXPRESS #36**  
10009 Fields Road  
Gaithersburg, Maryland 20878

NO.	REVISION	DATE

**EXTERIOR ELEVATIONS**

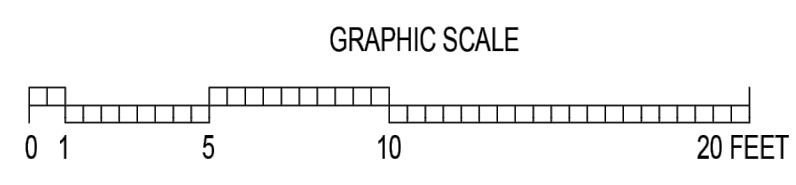
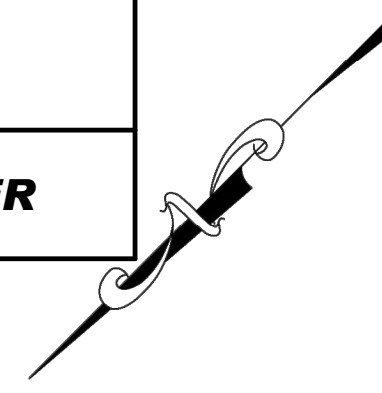
TOMMY'S #:  
DATE: 9-10-24  
DRAWN BY: SD  
DRAWING TITLE:

**A2.1**  
COPYRIGHT 2024



**NOTES REGARDING DETAILS BY OTHERS:**  
 1. DETAILS PREPARED BY OTHERS ARE IDENTIFIED AS SUCH BY WAY OF A TITLE BLOCK, REFERENCE, LOGO, OR OTHER NOTATION.  
 2. WHERE AN ORIGINAL DETAIL BY OTHERS HAS BEEN MODIFIED, THE MODIFICATIONS ARE IDENTIFIED BY REVISION CLOUDS.  
 3. REFER TO OUTSIDE SOURCE NOTES ON SHEET C-102.  
 4. WHEN THE SOURCE OF THE DETAIL IS A REVIEWING/REGULATORY AGENCY, FABRICATION AND INSTALLATION SHALL BE IN ACCORDANCE WITH APPLICABLE REQUIREMENTS AND SPECIFICATIONS.  
 5. WHEN APPROPRIATE, SHOP DRAWINGS SHALL BE FORWARDED TO THE REVIEWING/REGULATORY AGENCY PRIOR TO FABRICATION.

**DETAILS BY OTHERS DISCLAIMER**



1  
1.1  
3/16" = 1'-0"

**GENERAL NOTES**

- DO NOT SCALE DRAWINGS.
- FINISH FLOOR ELEVATION = 100' - 0". REFER TO CIVIL DRAWINGS FOR SITE DATUM ELEVATION EQUIVALENT.
- BEGINNING WORK INDICATES THAT THE CONTRACTOR HAS ACCEPTED AND VERIFIED EXISTING CONDITIONS.
- ALL DIMENSIONS ARE TO FACE OF MASONRY, FACE OF CONCRETE, FACE OF STUDS, COLUMN CENTERLINE AS SHOWN UNLESS OTHERWISE NOTED.
- ALL DIMENSIONS ARE PERPENDICULAR AND PARALLEL, UNLESS NOTED OTHERWISE.

**INTERIOR WALL GENERAL NOTES**

- CONSTRUCT ALL WALLS TIGHT TO DECK ABOVE AND EXTEND INTO DECK FLUTES AND WEBS OF STEEL MEMBERS UNLESS OTHERWISE NOTED.
- PROVIDE DEFLECTION TRACK AT THE TOP OF ALL INTERIOR NON-BEARING METAL STUD WALLS CAPABLE OF ACCOMMODATING 3/4" ROOF/FLOOR DEFLECTION.

**THIS SHEET IS FOR INFORMATIONAL PURPOSES ONLY.**

DATE	NO.	REVISION


TOMMY'S #:	-
DATE:	9-10-24
DRAWN BY:	SD
DRAWING TITLE:	FLOOR PLAN

PROFESSIONAL CERTIFICATION:  
I CERTIFY THAT THESE DOCUMENTS WERE PREPARED OR APPROVED BY ME, & THAT I AM A DULY LICENSED ARCHITECT UNDER THE LAWS OF THE STATE OF MARYLAND, LICENSE #12116, EXPIRATION DATE 4-29-25.

SEAL

A+A Project #240210  
New Car Wash Facility  
**AUTO SPA EXPRESS #36**  
10009 Fields Road  
Gaithersburg, Maryland 20878

**A1.1**  
COPYRIGHT 2024