

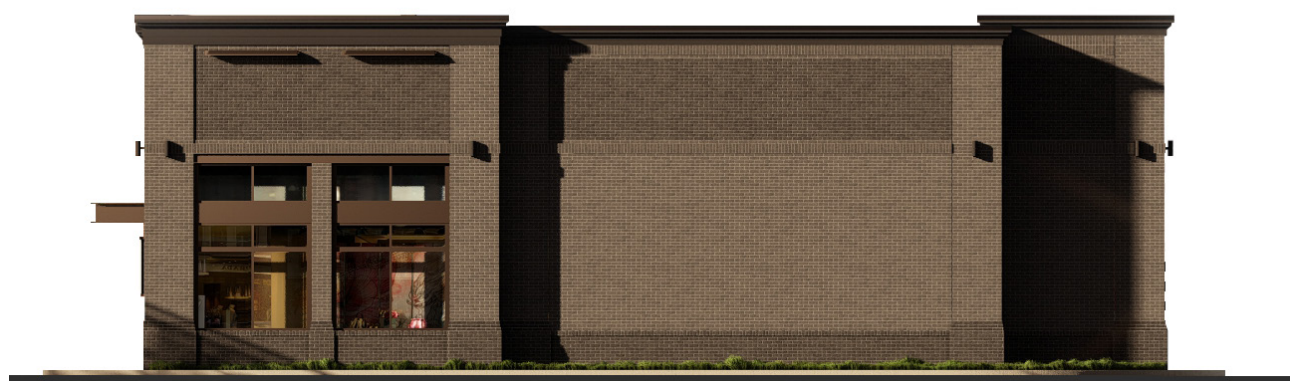
CITY OF GAITHERSBURG MAYOR & COUNCIL  
 31 SOUTH SUMMIT AVENUE, GAITHERSBURG, MARYLAND 20877  
**SCHEMATIC DEVELOPMENT  
 PLAN APPROVAL**  
 AT THE REGULARLY SCHEDULED MEETING OF THE MAYOR AND  
 CITY COUNCIL HELD ON September 3, 2024  
 APPLICATION NO. SDP-9759-2024 WAS GRANTED  
 SCHEMATIC DEVELOPMENT PLAN APPROVAL  
 BY RESOLUTION R-49-24 WITH One ( 1 ) CONDITIONS.  
 DATE 9/24/2024 BY Carolyn Sinden  
**NOTE:** ANY REVISIONS TO SIGNED PLANS MUST BE  
 APPROVED BY THE MAYOR AND CITY COUNCIL



PLAN SOUTH ELEVATION (FRONT)



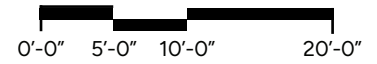
PLAN WEST ELEVATION (SIDE)



PLAN EAST ELEVATION (SIDE)



PLAN NORTH ELEVATION (REAR)



**715 Progress Way**  
 Gaithersburg, Md



*Note: For conceptual illustration only. Design, dimensions, colors, materials, and the location of signs and doors are subject to change.*

**RETAIL BUILDING A**

23014.00  
 6.07.2024  
 Page 1



T.O. PARAPET  
25' - 4"

T.O. PARAPET  
23' - 4"

CITY OF GAITHERSBURG MAYOR & COUNCIL  
 31 SOUTH SUMMIT AVENUE, GAITHERSBURG, MARYLAND 20877  
**SCHEMATIC DEVELOPMENT  
 PLAN APPROVAL**  
 AT THE REGULARLY SCHEDULED MEETING OF THE MAYOR AND  
 CITY COUNCIL HELD ON September 3, 2024  
 APPLICATION NO. SDP-9759-2024 WAS GRANTED  
**SCHEMATIC DEVELOPMENT PLAN APPROVAL**  
 BY RESOLUTION R-49-24 WITH One ( 1 ) CONDITIONS.  
 DATE 9/24/2024 BY Caroline Seiden  
**NOTE:** ANY REVISIONS TO SIGNED PLANS MUST BE  
 APPROVED BY THE MAYOR AND CITY COUNCIL.



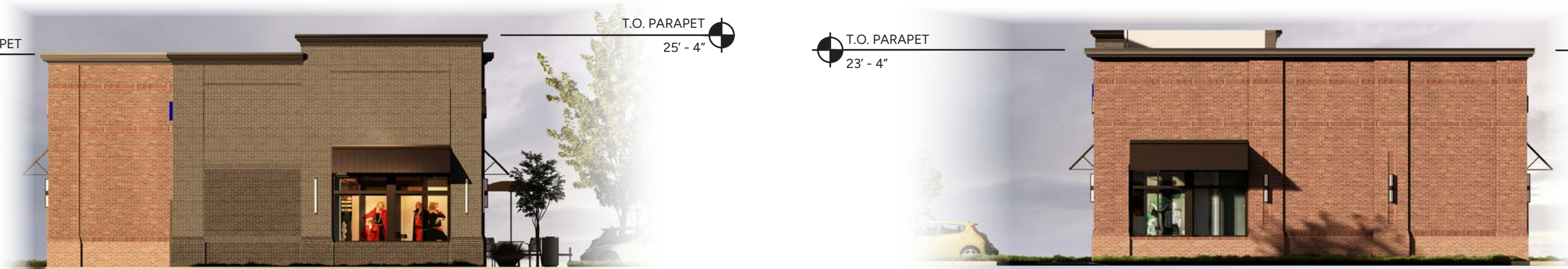
PLAN SOUTH ELEVATION (FRONT)

T.O. PARAPET  
23' - 4"

T.O. PARAPET  
25' - 4"

T.O. PARAPET  
23' - 4"

T.O. PARAPET  
23' - 4"



PLAN WEST ELEVATION (SIDE)

PLAN EAST ELEVATION (SIDE)

T.O. PARAPET  
23' - 4"

T.O. PARAPET  
23' - 4"



PLAN NORTH ELEVATION (REAR)

725 Progress Way  
Gaithersburg, Md



*Note: For conceptual illustration only as part of schematic development plan review. Design, dimensions, colors, materials, and the location of signs and doors are subject to change at the time of final site plan approval based on, among other things, the requirements of future tenants.*

**RETAIL BUILDING B**  
 ELEVATIONS - NOT TO SCALE

23014.00  
 7.25.2024  
 Page 1





FRONT OF BUILDING - PERSPECTIVE

715 Progress Way  
Gaithersburg, Md



*Note: For conceptual illustration only. Design, dimensions, colors, materials, and the location of signs and doors are subject to change.*

RETAIL BUILDING **A**

23014.00  
2.20.2024  
Page 2





REAR OF BUILDING - PERSPECTIVE

715 Progress Way  
Gaithersburg, Md



*Note: For conceptual illustration only. Design, dimensions, colors, materials, and the location of signs and doors are subject to change.*

RETAIL BUILDING **A**

23014.00  
2.20.2024  
Page 3





725 Progress Way  
Gaithersburg, Md



*Note: For conceptual illustration only as part of schematic development plan review. Design, dimensions, colors, materials, and the location of signs and doors are subject to change at the time of final site plan approval based on, among other things, the requirements of future tenants.*

RETAIL BUILDING **B**

23014.00  
7.25.2024  
Page 2





725 Progress Way  
Gaithersburg, Md



*Note: For conceptual illustration only as part of schematic development plan review. Design, dimensions, colors, materials, and the location of signs and doors are subject to change at the time of final site plan approval based on, among other things, the requirements of future tenants.*

RETAIL BUILDING **B**

23014.00  
7.25.2024  
Page 3

