

April 3, 2026

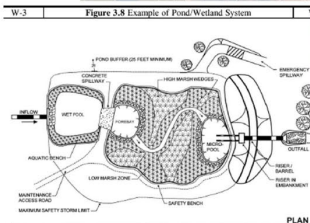
On March 31 the Environmental Services team held a community meeting to present alternative analyses for the redesign of Bridalwood Stream detention basin. Below are a few photos to help residents picture what the area of city property could look like with each exhibit. No photo is a perfect replication of the vision as no photo shop was utilized. Photos are a combination of what could be found via google, and throughout the city.

Alternative 1: Pond wetland system.



Alternative 1- Pond/Wetland System

- Remove concrete channel
- Retain existing weir
- Add low flow non-clogging riser
- Add micropool before weir
- Add meandering channel
- Add sediment forebays
- Plant high marsh and low marsh natives in basin; trees along perimeter
- Replace bamboo with native plants



City of Gaithersburg • 800 Rabbitt Road, Gaithersburg, Maryland 20878
301-258-6370 • FAX 301-258-6375 • publicworks@gaitthersburgmd.gov • gaitthersburgmd.gov

MAYOR
Jud Ashman

COUNCIL MEMBERS
Neil Harris
Lisa Henderson
Yamil Hernández
Jim McNulty
Robert T. Wu

CITY MANAGER
Tanisha R. Briley

Example photos of alternative 1:



Source:
<https://www.epa.gov/system/files/documents/2021-11/bmp-stormwater-wetland.pdf>



Location: Victory Farm, Gaithersburg.



Location: Blohm Park, Gaithersburg.

These plantings may demonstrate what alternative 1 could look like. This system will increase water quality in two ways. Above ground the stems help trap sediments by slowing water, so that these sediments (that other pollution sources including nutrients tend to bind to chemically) will settle out of the water. Below ground these plants have a much more extensive root structure than turf grass which will increase water absorption. The pond on the right is larger than the expected area of ponding, but the mixture of grasses and perennials may be similar.



Alternative 2 will include trees, but also likely shrubs and herbaceous plants will be added to increase water filtration and provide wildlife habitat. Water will only pool at the beginning and end of the system in intended areas rather than throughout the site.

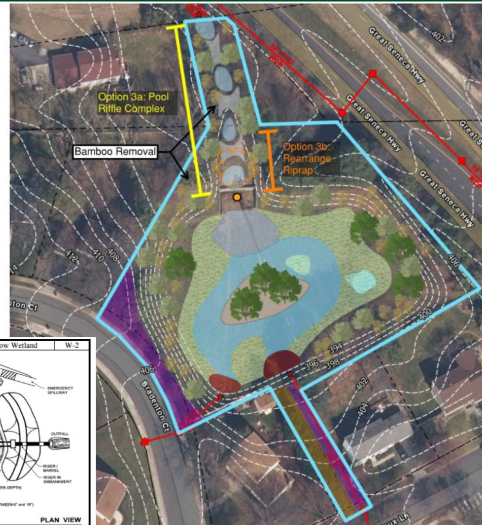
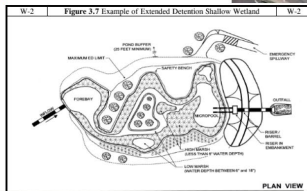
Location: Blohm Park, Gaithersburg.

Alternative 3: Extended Detention Shallow wetland



Alternative 3- Ext. Det. Shallow Wetland

- Remove concrete channel
- Retain existing weir
- Add low flow non-clogging riser
- Add micropool before weir
- Add meandering channel
- Add sediment forebays
- Plant wetlands in basin; trees on island and around perimeter
- Bamboo removal





Example photos of alternative 3



Source:
https://stormwater.pca.state.mn.us/stormwater_ponds

Location: Blohm Park, Gaithersburg

While these photos exhibit more water than alternative 3 will hold on a regular basis, the final project will likely have a small area of standing water throughout the year. Vegetation will be a combination of trees and wetland grasses/forbs.

Please let us know if you have any questions and fill out our survey to let us know which alternative is your favorite and what your concerns are so we can prepare and address these concerns as seamlessly as possible!

<https://survey123.arcgis.com/share/1aec271a7a21460f802b9d6c43d43cef>

Thank you for your input and patience as we go through this process,

Sincerely,

Megan Kelsall

City of Gaithersburg • 800 Rabbitt Road, Gaithersburg, Maryland 20878
301-258-6370 • FAX 301-258-6375 • publicworks@gaithersburgmd.gov • gaithersburgmd.gov

MAYOR
Jud Ashman

COUNCIL MEMBERS
Neil Harris
Lisa Henderson
Yamil Hernández
Jim McNulty
Robert T. Wu

CITY MANAGER
Tanisha R. Briley