

AT&T Suffield

New Telecommunications Monopole Proposal

Great Seneca Highway, Gaithersburg, MD
20878

Agenda:

1. Project Overview and Design
2. Radio Frequency/Cellular Coverage
3. Coverage Plots
4. Photo Simulations
5. Maintenance on the Site
6. Safety Standards and Misconceptions
7. Question and Answer!

Project Overview – Purpose

- ❑ The purpose is to provide wireless AT&T coverage to the area
 - ❑ The structure will include AT&T and at least 2 additional/future carriers
 - ❑ This will serve the neighborhoods around an area off Great Seneca Highway

- ❑ This site will also incorporate First-Net 911 Emergency Services
 - ❑ Program signed between Federal Government and AT&T
 - ❑ Provides higher call bandwidth when folks are calling 911 services
 - ❑ Decreases first responder response time in event of emergency

Project Overview – Design

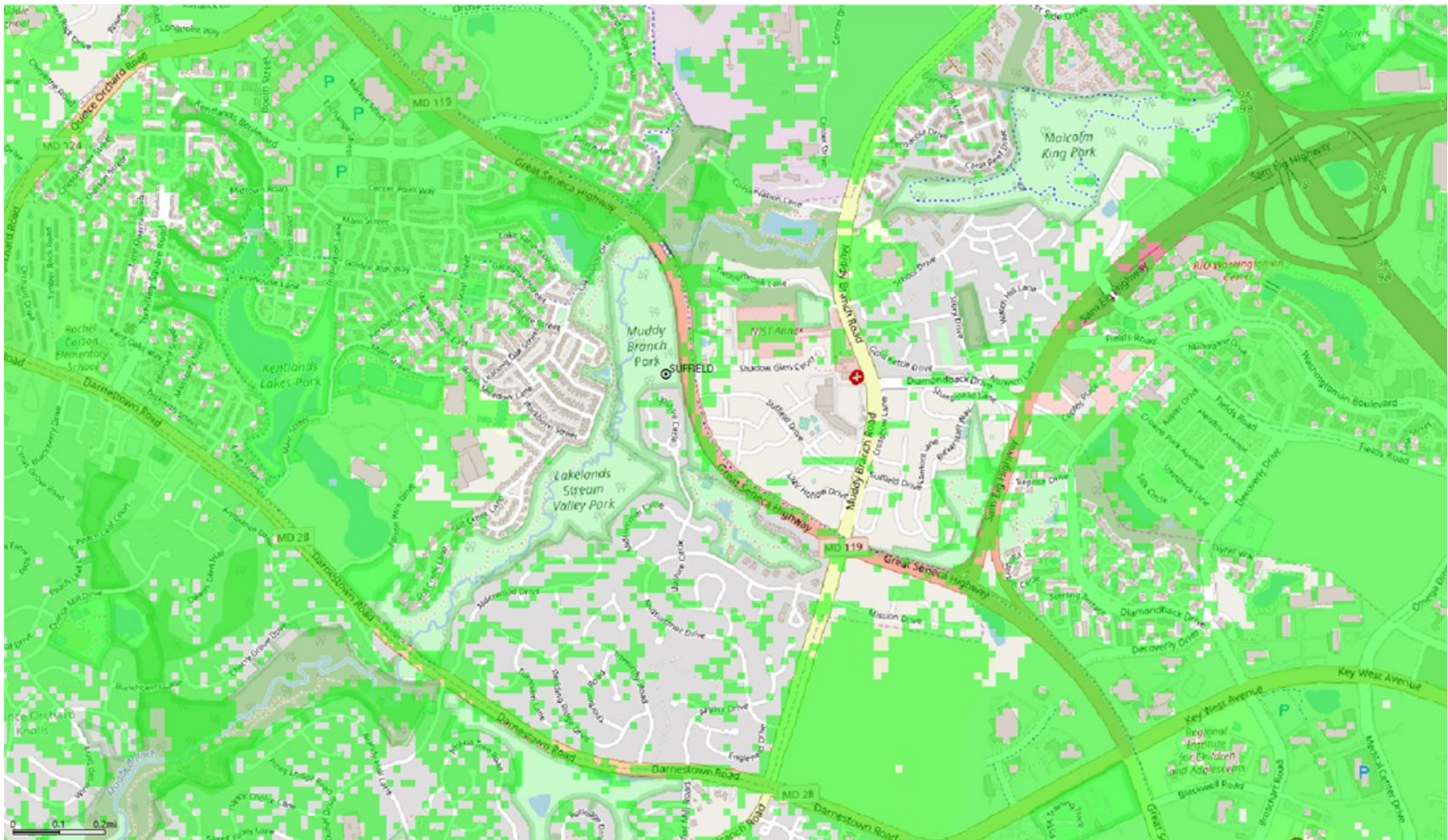
❑ Installation of 6 panel directional antennas on light pole

- ❑ Total pole height is 159 feet including the lightning rod
- ❑ AT&T will install their antennas at 150 feet
- ❑ Installed on a triangular platform to hold the antennas in place securely
- ❑ Structure will be able to accommodate up to 3 future carriers
- ❑ The compound will accommodate at least 2 additional equipment spaces

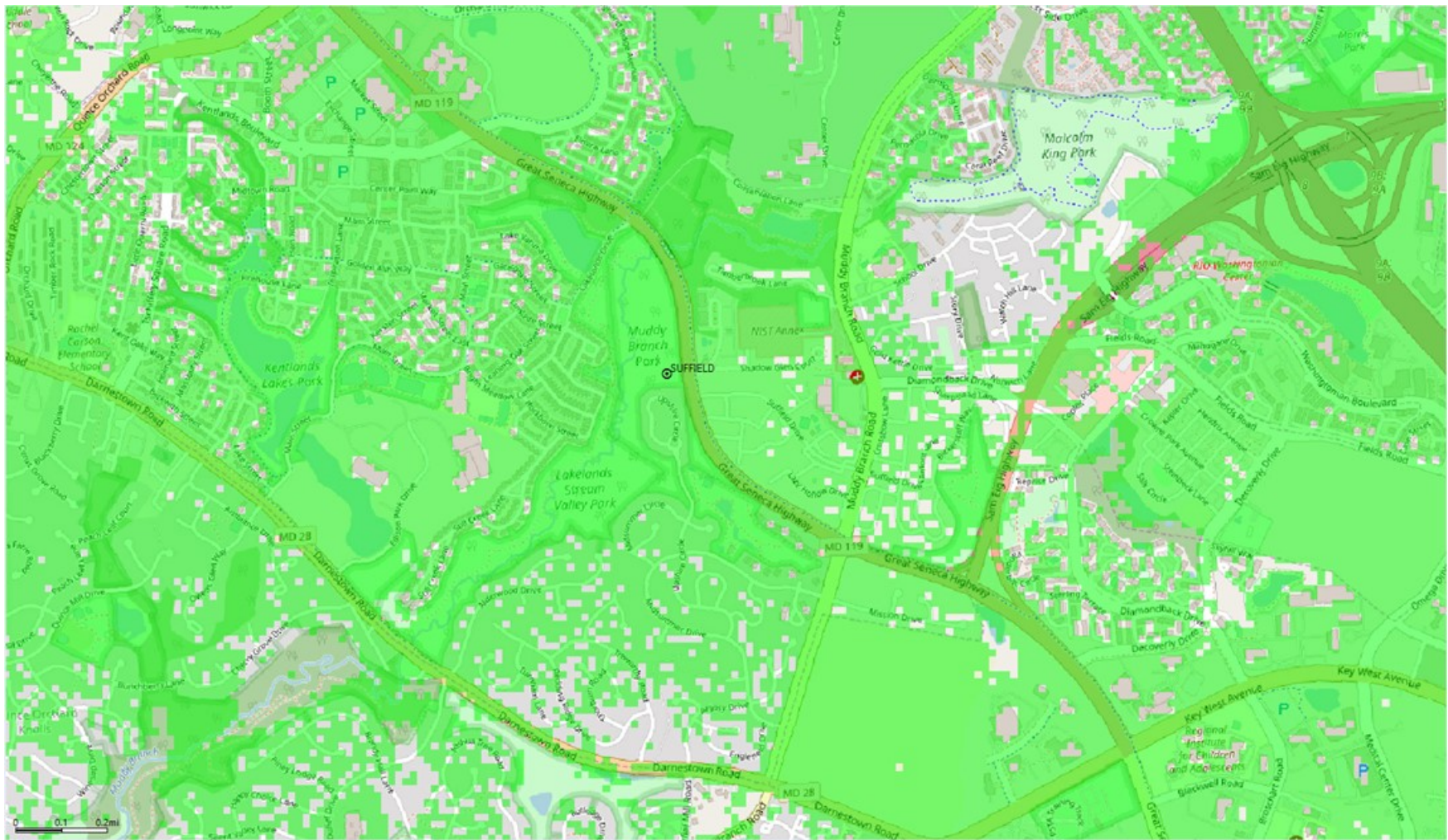
❑ New fenced in compound to house AT&T equipment

- ❑ Locked chain linked fence 8 feet in height
- ❑ Surrounded by existing native trees to provide screening from public view
- ❑ 50 x 50 feet = 2,500 total square feet of ground space
- ❑ With walk in cabinet (WIC) shelter and generator

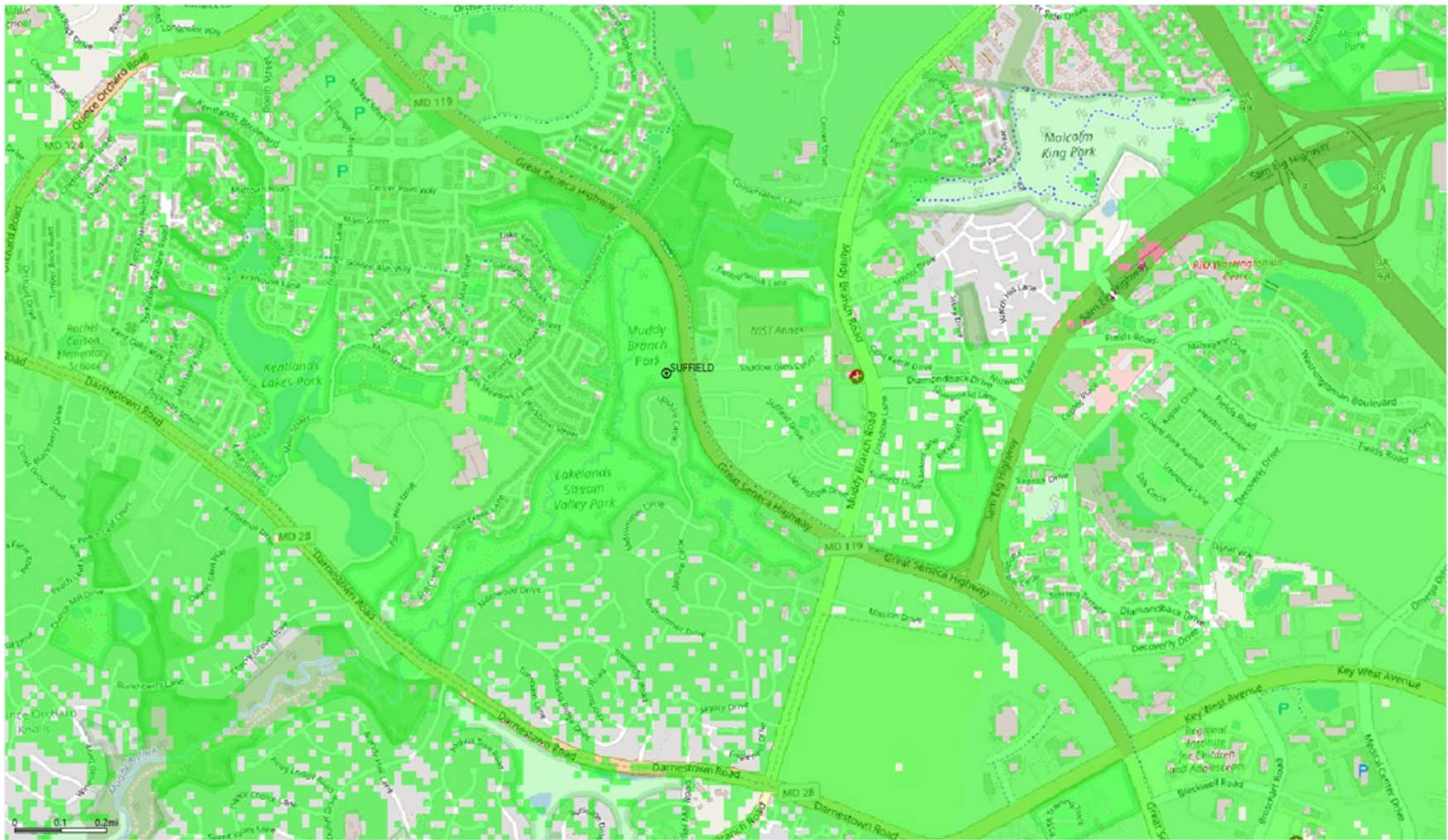
Existing AT&T Coverage without Suffield



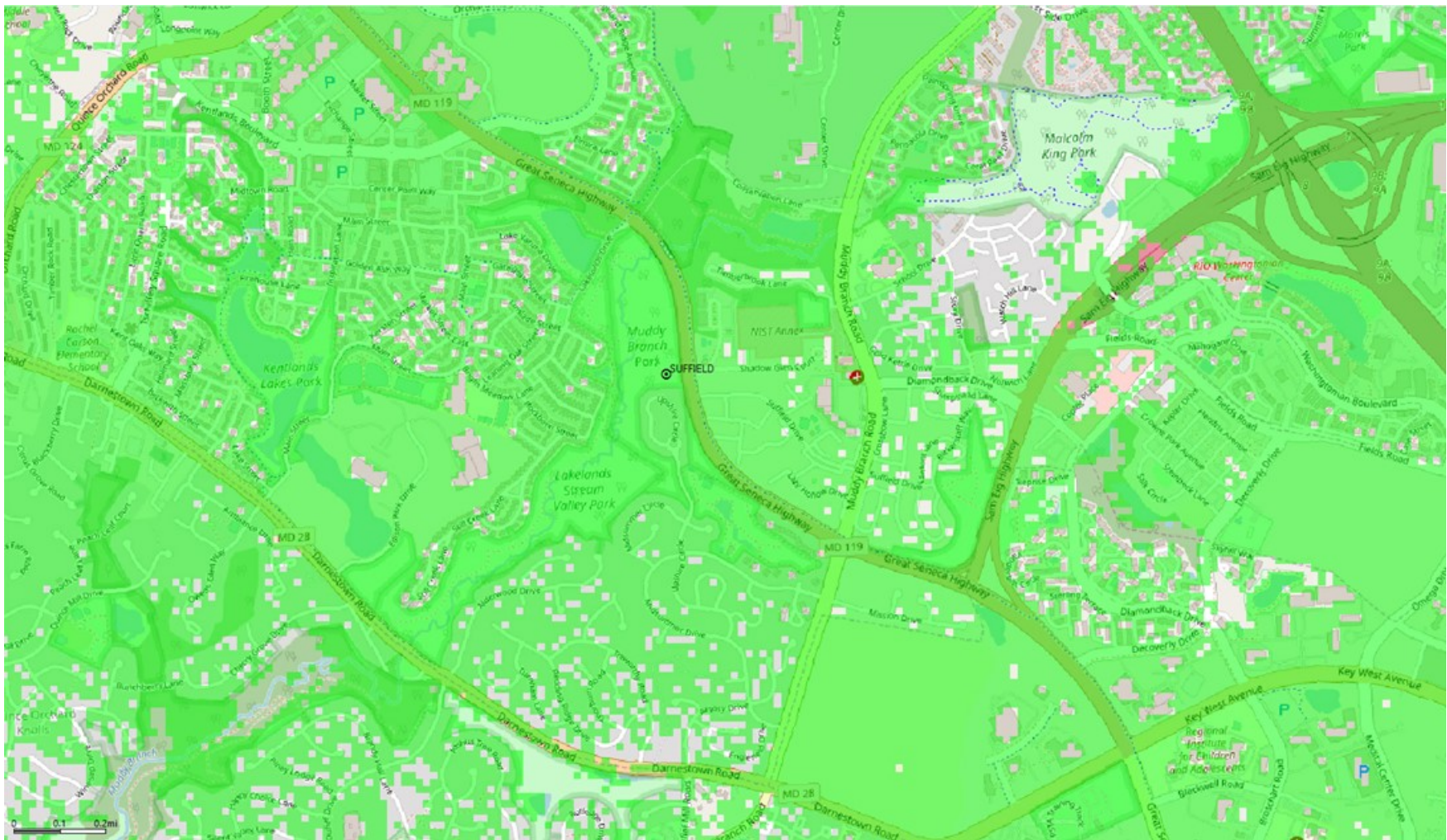
Proposed AT&T Coverage with Suffield at 130'



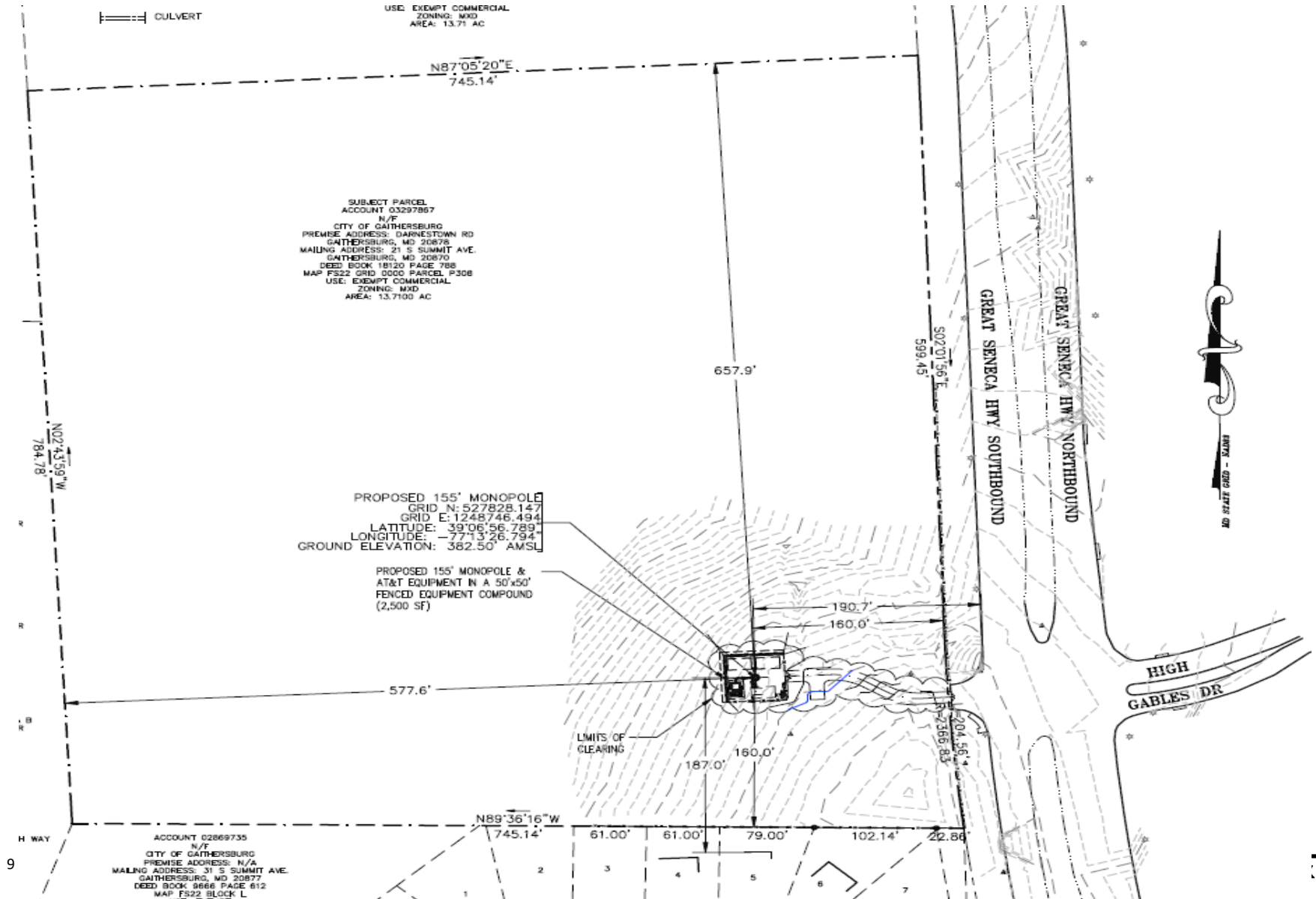
Proposed AT&T Coverage with Suffield at 150'



Proposed AT&T Coverage with Suffield at 170'



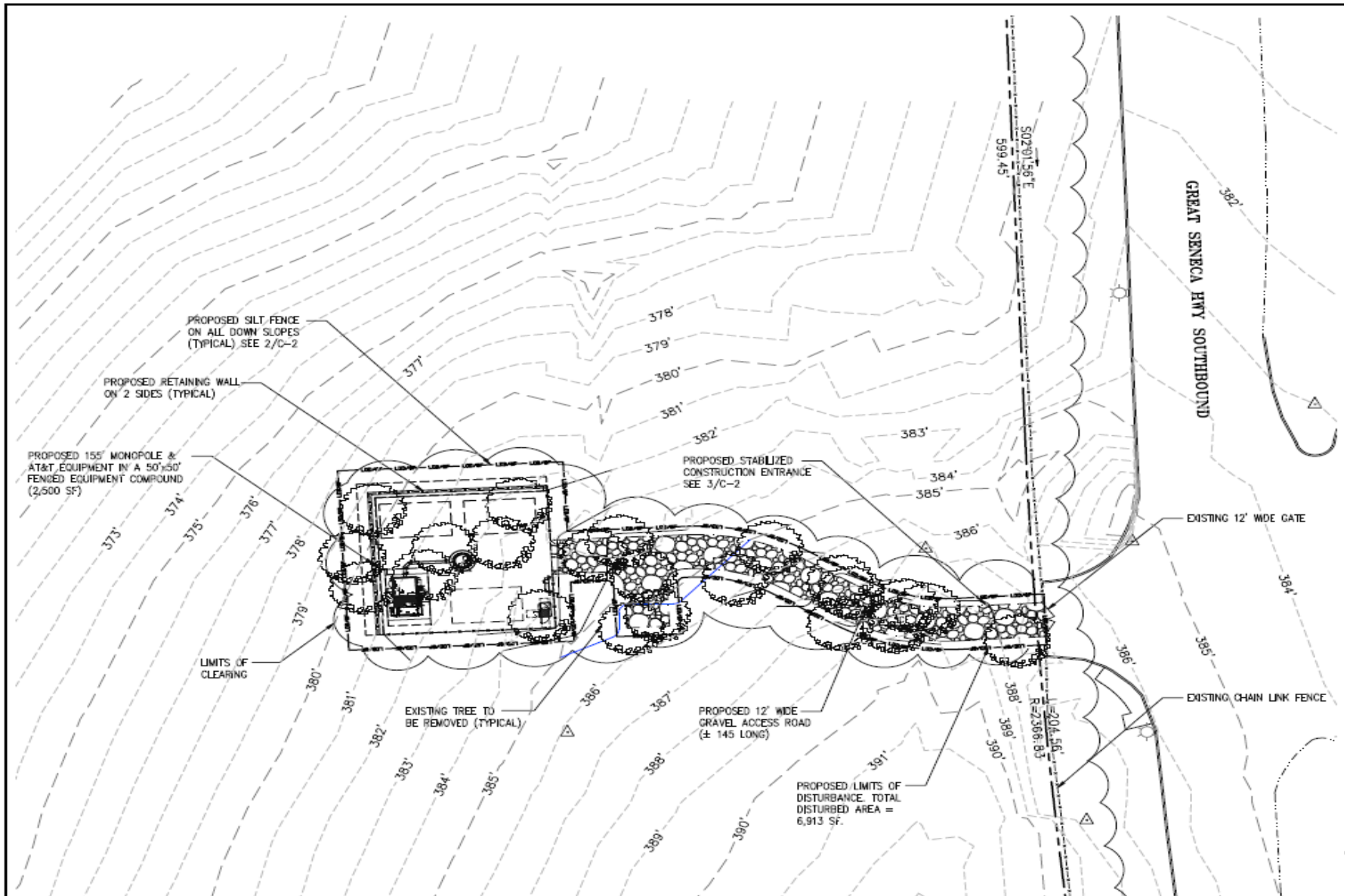
Design – Overhead Layout



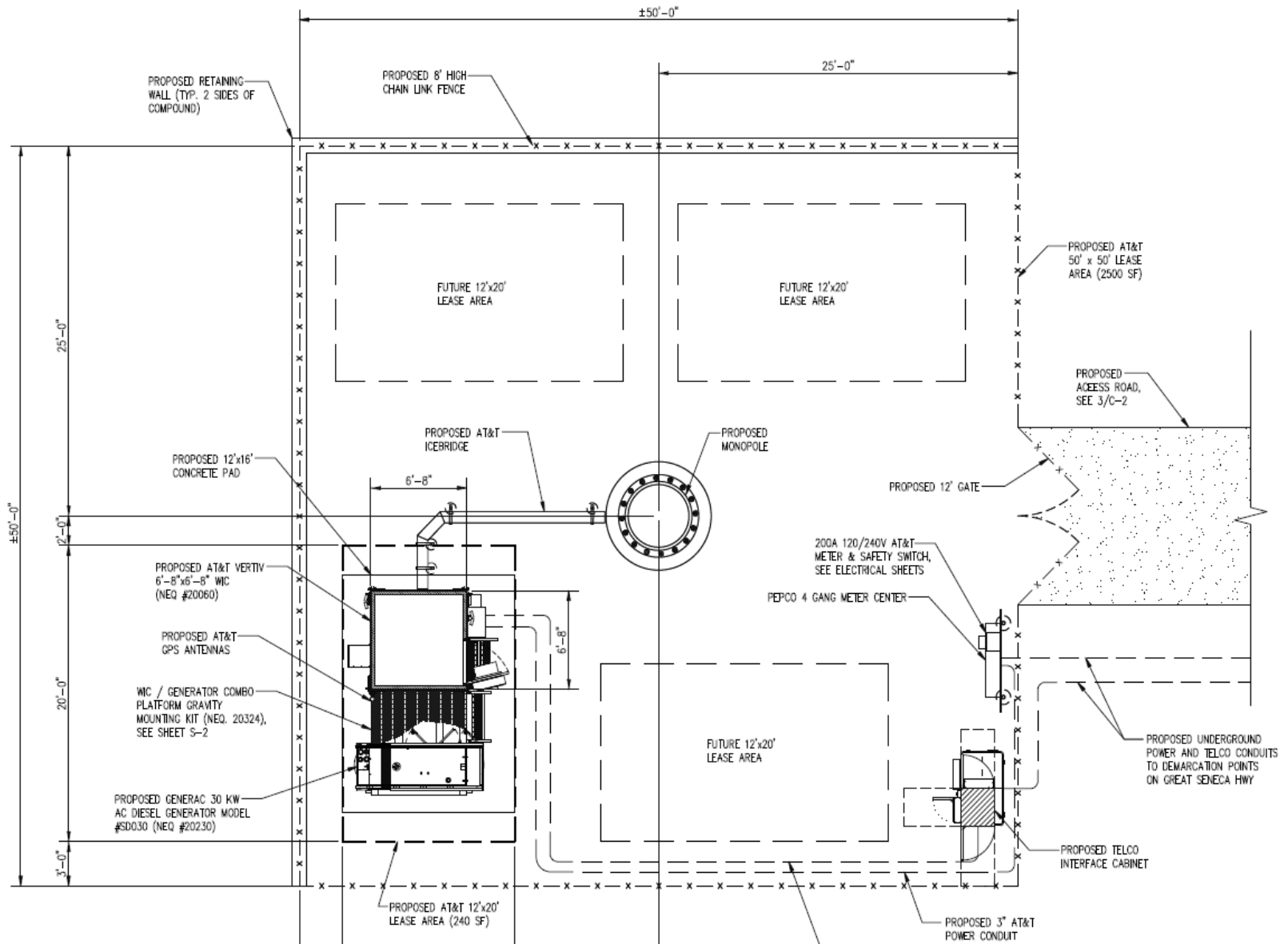
Design – Aerial View



Design – Access Road and Compound



Design – Compound



Design – Tower Elevation

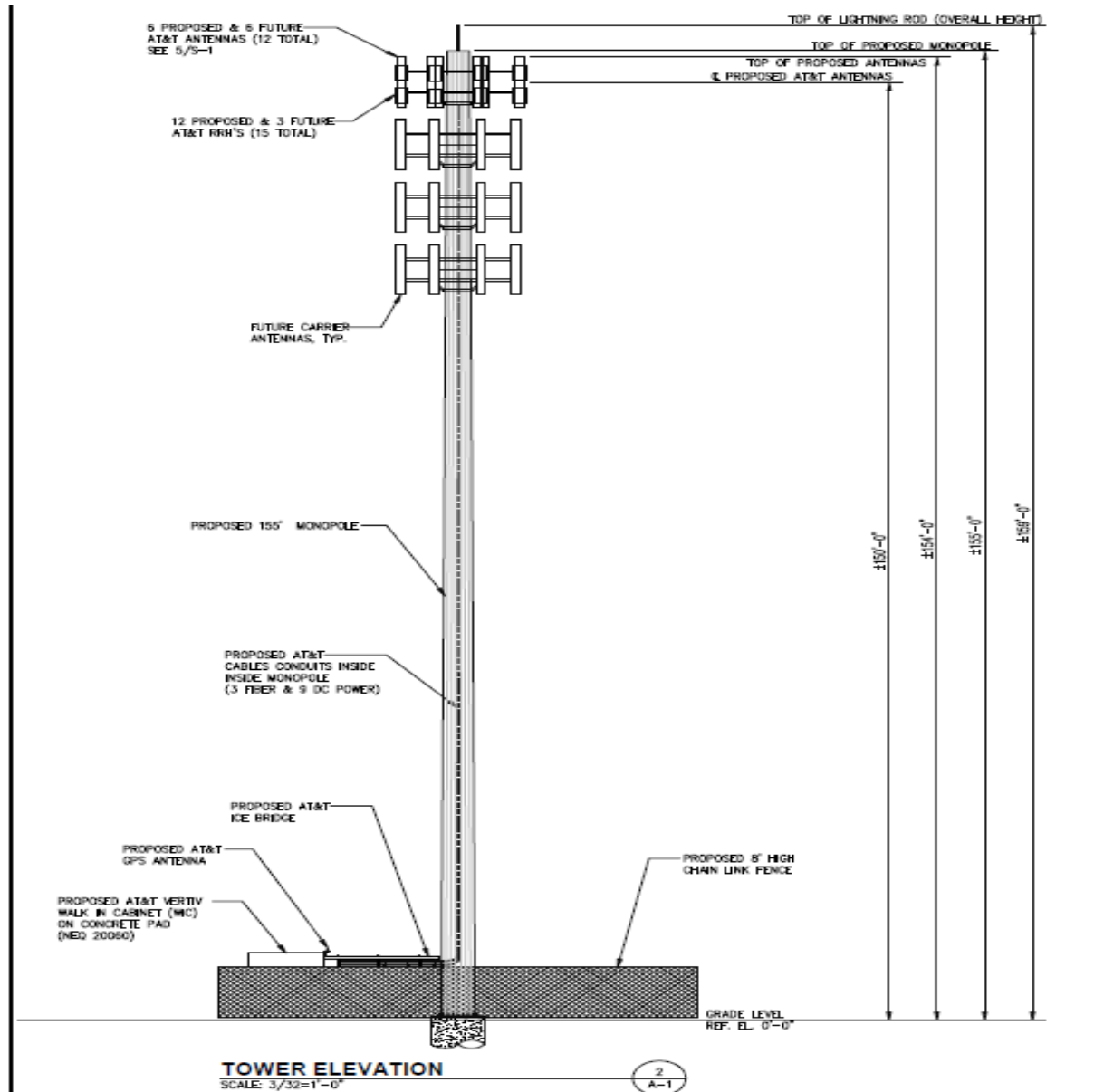


Photo Simulations



1362 Mellon Road, Suite 140
Hanover, MD 21076

SITE NAME: SUFFIELD
FA# 10578913 / SITE# 4525
GREAT SENECA HWY
GAITHERSBURG, MD 20878

Prepared for
AT&T Mobility
7150 Standard Drive
Hanover, MD 21076



SATELLITE VIEW



EXISTING VIEW 1



PROPOSED VIEW 1

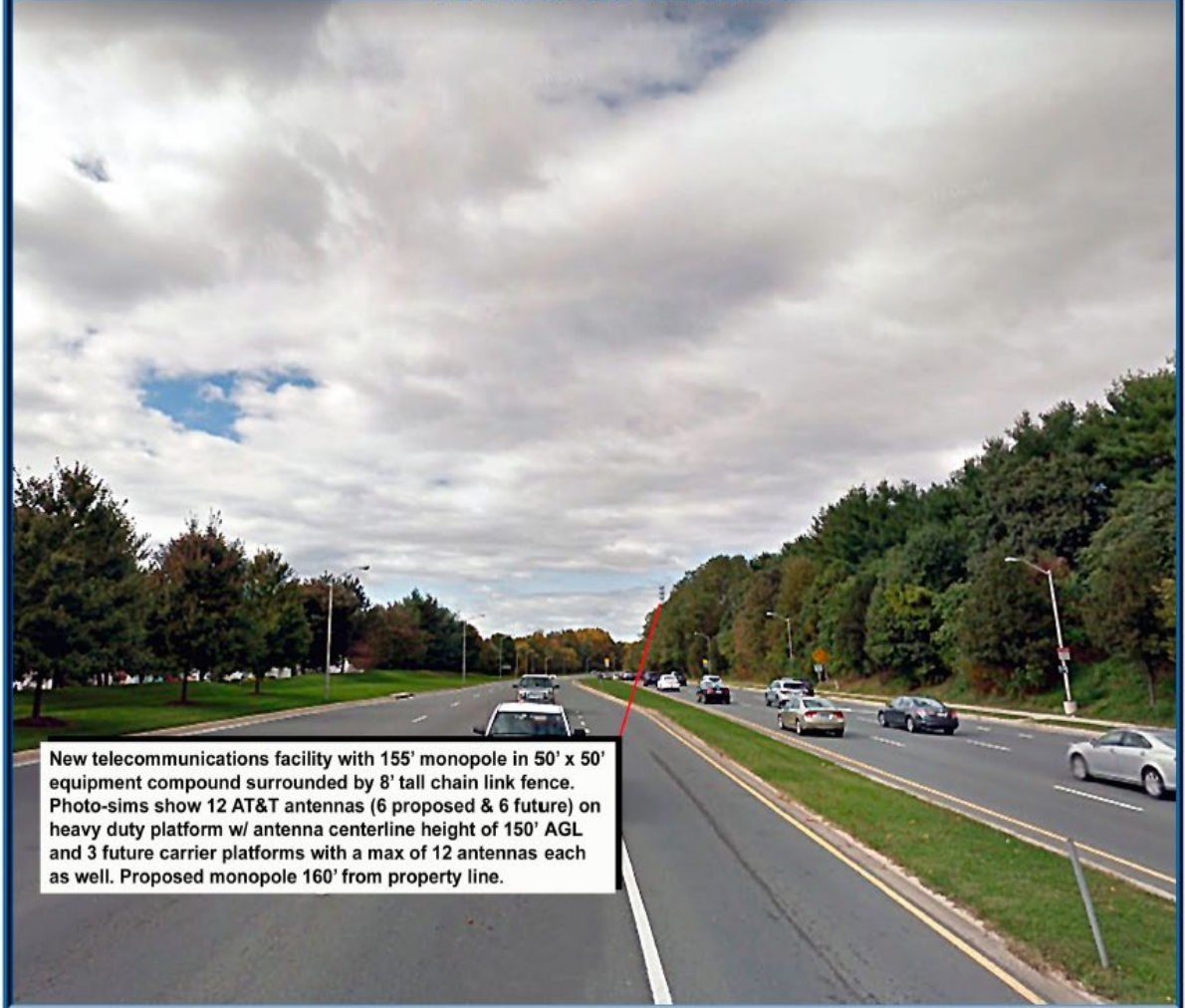


Photo Simulations



1362 Mellon Road, Suite 140
Hanover, MD 21076

SITE NAME: SUFFIELD
FA# 10578913 / SITE# 4525

GREAT SENECA HWY
GAITHERSBURG, MD 20878

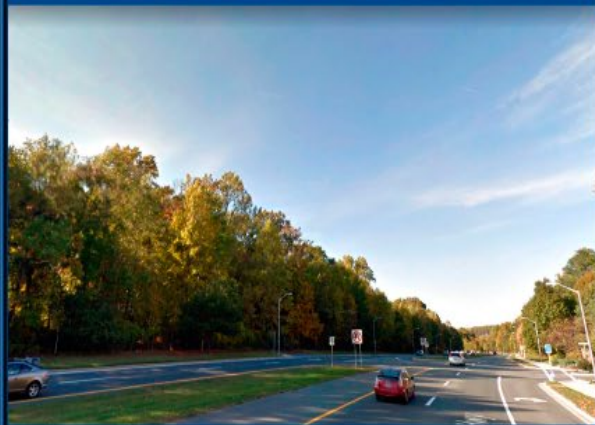
Prepared for
AT&T Mobility
7150 Standard Drive
Hanover, MD 21076



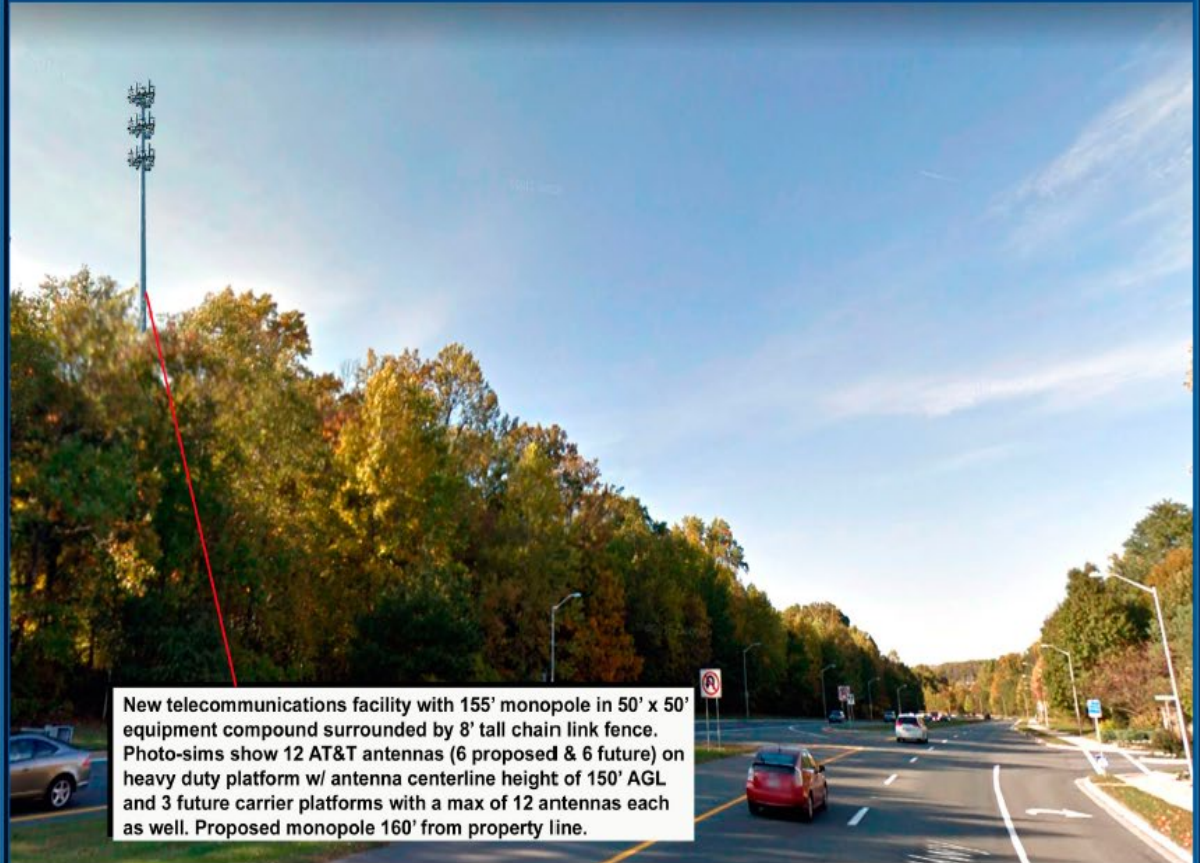
SATELLITE VIEW



EXISTING VIEW 2



PROPOSED VIEW 2



New telecommunications facility with 155' monopole in 50' x 50' equipment compound surrounded by 8' tall chain link fence. Photo-sims show 12 AT&T antennas (6 proposed & 6 future) on heavy duty platform w/ antenna centerline height of 150' AGL and 3 future carrier platforms with a max of 12 antennas each as well. Proposed monopole 160' from property line.

Photo Simulations



1362 Mellon Road, Suite 140
Hanover, MD 21076

SITE NAME: SUFFIELD
FA# 10578913 / SITE# 4525
GREAT SENECA HWY
GAITHERSBURG, MD 20878

Prepared for
AT&T Mobility
7150 Standard Drive
Hanover, MD 21076



SATELLITE VIEW



EXISTING VIEW 3



PROPOSED VIEW 3



New telecommunications facility with 155' monopole in 50' x 50' equipment compound surrounded by 8' tall chain link fence. Photo-sims show 12 AT&T antennas (6 proposed & 6 future) on heavy duty platform w/ antenna centerline height of 150' AGL and 3 future carrier platforms with a max of 12 antennas each as well. Proposed monopole 160' from property line.

Photo Simulations



1362 Mellon Road, Suite 140
Hanover, MD 21076

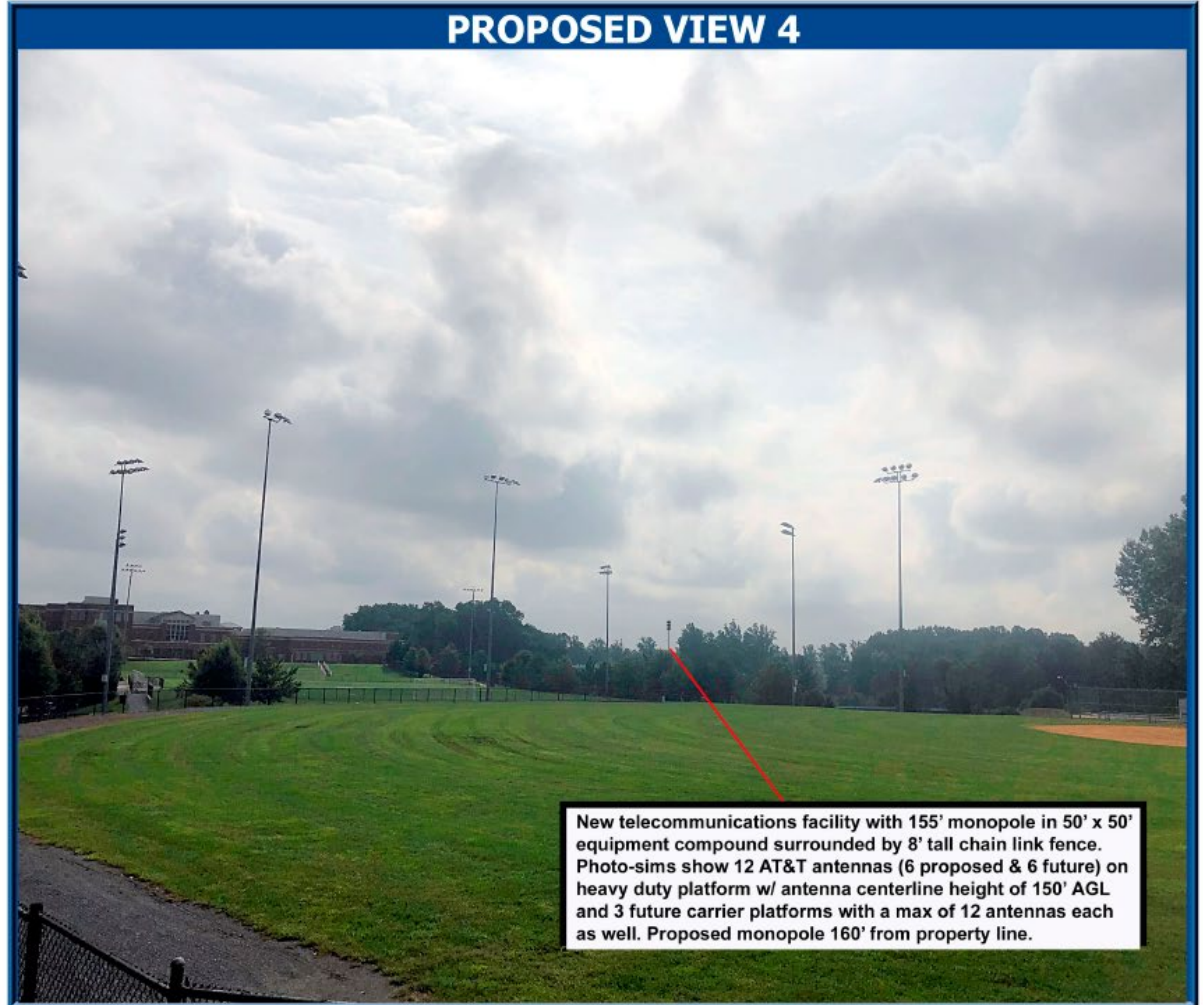
SITE NAME: SUFFIELD
FA# 10578913 / SITE# 4525
GREAT SENECA HWY
GAITHERSBURG, MD 20878



SATELLITE VIEW



EXISTING VIEW 4



PROPOSED VIEW 4

New telecommunications facility with 155' monopole in 50' x 50' equipment compound surrounded by 8' tall chain link fence. Photo-sims show 12 AT&T antennas (6 proposed & 6 future) on heavy duty platform w/ antenna centerline height of 150' AGL and 3 future carrier platforms with a max of 12 antennas each as well. Proposed monopole 160' from property line.

Maintenance on the Site

❑ 30 KW Diesel Generator

- ❑ Backup generator in case main power source is down
- ❑ Generator only serviced once every few months for testing purposes
- ❑ 150 gallon tank for a fuel source to the generator

❑ Compound

- ❑ AT&T is responsible for maintenance of the fence and inner compound
- ❑ AT&T to maintain landscaping to assure aesthetic appeal remains intact
- ❑ The compound will accommodate at least 2 additional equipment spaces

Safety Standards and Misconceptions

- ❑ All antennas emanate low frequency radio emissions
 - ❑ All RF wave transfers are directed outward, not downward
- ❑ Deemed to be harmless to humans and animals by the...
 - ❑ American Cancer Society (ASC)
 - ❑ Federal Communication Commission (FCC)
- ❑ AT&T in compliance with FCC standards for RF emissions
 - ❑ ERP = effective radiated power (total power in watts radiated from the antennas)
 - ❑ Antennas are harmless to students and residents in the area

Question and Answer



AT&T