

**VICINITY MAP:**



**DEVELOPER:**

A&W Gaithersburg, LLC  
 C/O Ellisdale Construction and Development  
 113 East Market Street  
 Suite 210  
 Leesburg, VA 20176  
 (571-293-8264)

**ARCHITECT:**

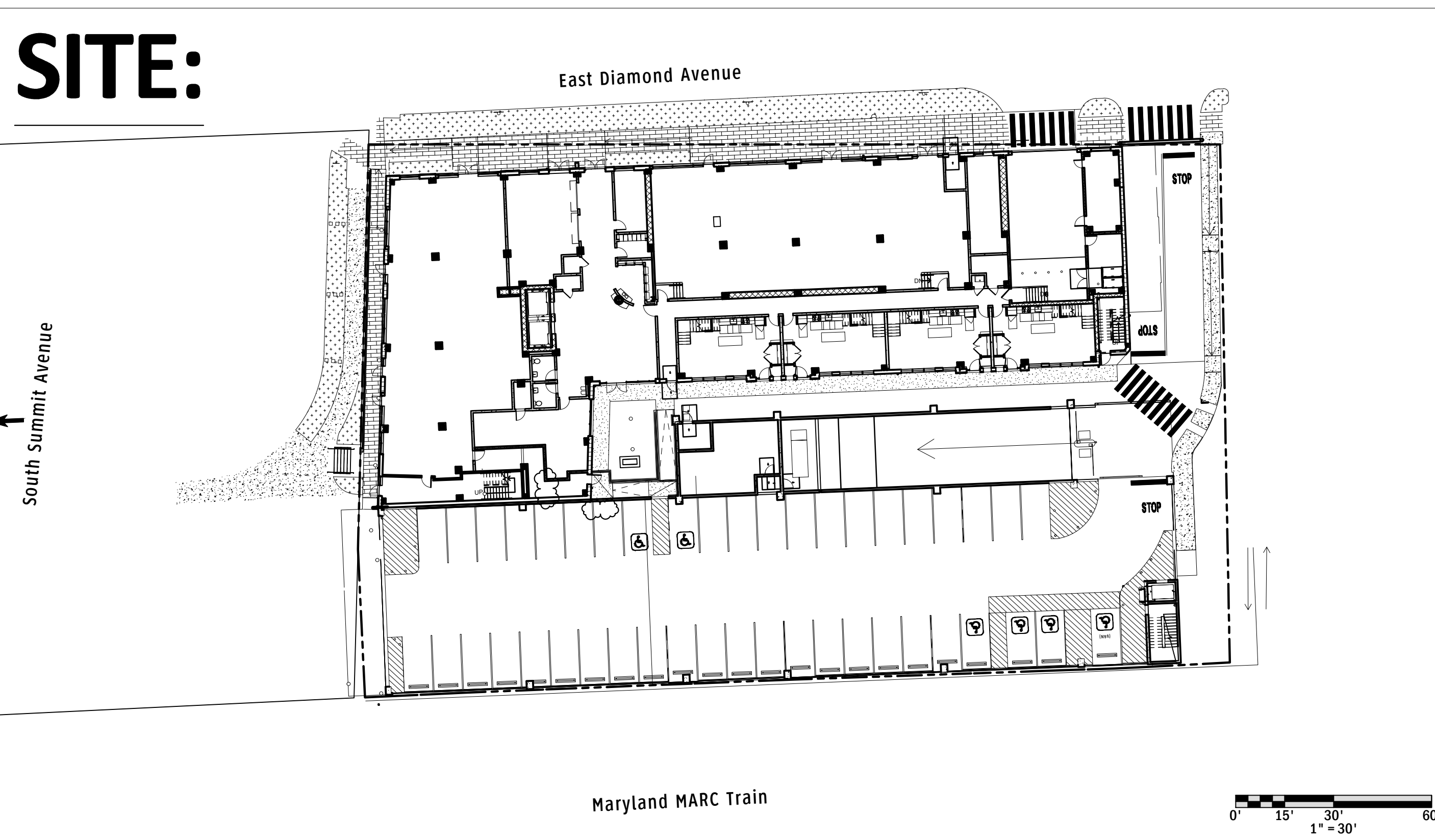
The Eisen Group  
 623 H Street, NW  
 Second Floor  
 Washington, D.C. 20001  
 (202)-595-1900

**ATTORNEY:**

Linowes & Blocher  
 7200 Wisconsin Avenue  
 Suite 800  
 Bethesda, MD 20814  
 (301)-961-5124

**TRAFFIC/PARKING:**

Gorove Slade Associates  
 1140 Connecticut Avenue, NW  
 Suite 600  
 Washington, D.C. 20036  
 (202)-296-8625



**PAVEMENT MARKING NOTES:**

1. All Pavement Markings and Signs are proposed and shall be installed by the contractor in accordance with SHA MUTCD Standards.
2. Contractor shall contact the City of Gaithersburg Department of Public Works at 301-258-6370 no less than ten business days prior the the final paving of the project for the installation of final pavement markings and signs. The Contractor shall spot locate all signing and pavement markings and request/receive approval of spot locations and signing & pavement marking materials prior to installing.
3. Limits shown of proposed pavement markings are approximate and may be modified in the field to ensure that proposed pavement markings do not conflict with peripheral markings.
4. Maintenance of temporary pavement markings and signs shall be the Contractor's responsibility until implementation of final pavement markings and signs.
5. All exterior pavement markings shall be thermoplastic, not paint.
6. All interior pavement markings shall be waterproof concrete paint
7. All thermoplastic markings will have primer sealer applied prior to their application.
8. Any laitance and curing must be removed from the surface prior to the installation of any pavement marking. Water jetting, grinders, or abrasive blasting are all acceptable means of removal, brooming the surface is not.

**DESCRIPTION:**

This specification covers a reflectorized pavement striping material of the type that is applied to a road surface in a molten state with premixed glass beads by spray or extrusion means, with a supplemental surface application of glass spheres. When applied properly and at the designated thickness and width the stripe shall, upon cooling, be reflectorized and be able to resist deformation by traffic. The applied material shall be impervious to degradation by motor oil, diesel fuel, grease deposits and ice-preventative chemicals.

**MATERIAL REQUIREMENTS:**

The thermoplastic pavement marking materials used in this contract shall meet the following specifications. This specification covers reflectorized oil and grease impervious thermoplastic road marking materials which are (1) hot extrusion applied with a surface application of glass spheres and (2) heat fused applied. The properly applied markings shall be reflectorized and able to durably resist degradation and deformation by traffic

The thermoplastic materials shall be homogeneously composed of pigment, filler, resins, and glass reflectorized spheres, and shall be available in both yellow and white.

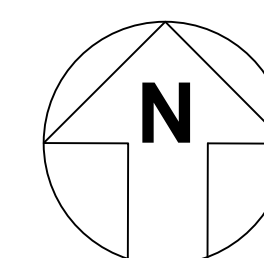
Composition: The pigment, beads, and filler shall be uniformly dispersed in the resin. The materials shall be free from all skins, dirt, and foreign objects and shall comply with requirements according to Table 1 (see Sheet #5). Only new materials shall be acceptable for use on this project.

**SHEET INDEX:**

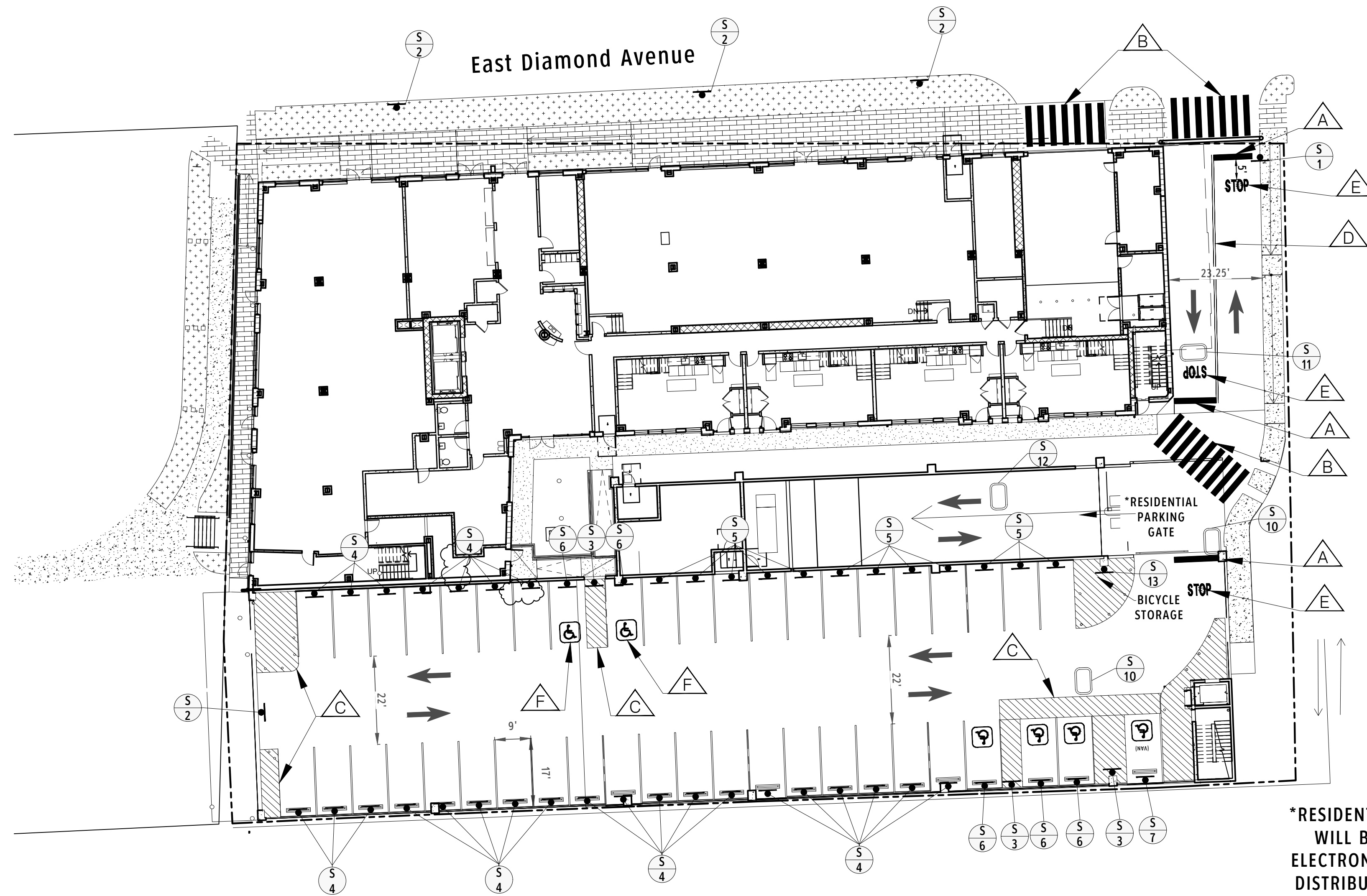
- 1) COVER SHEET
- 2) PAVEMENT MARKING AND SIGNAGE PLAN: GROUND LEVEL
- 3) PAVEMENT MARKING AND SIGNAGE PLAN: SECOND LEVEL
- 4) PAVEMENT MARKING AND SIGNAGE PLAN: ROOF LEVEL
- 5) DETAILS

CITY OF GAITHERSBURG PLANNING COMMISSION  
 11 SOUTH SUMMIT AVENUE, GAITHERSBURG, MARYLAND 20878  
**SITE PLAN APPROVAL**  
 AT THE REGULARLY SCHEDULED MEETING OF THE PLANNING COMMISSION HELD ON April 4, 2019  
 APPLICATION NO. SP-7805-2017 WAS GRANTED  
**FINAL SITE PLAN APPROVAL**  
 WITH Conditions (SEE CONDITIONS) SEE 2-D DRAWING LETTER  
 DATE 7/22/2021 BY [Signature]  
 NOTE: ANY REVISIONS TO SIGNED PLANS MUST BE APPROVED BY THE PLANNING COMMISSION OR PLANNING STAFF

CITY OF GAITHERSBURG  
 DEPARTMENT OF PUBLIC WORKS  
**FINAL APPROVAL**  
 APPLICATION NO. SP-7805-2017  
 DATE July 22, 2021  
 BY [Signature]



DRAWING SCALE		DATE	3.12.2018	<b>315 East Diamond Avenue                  Pavement Marking and Signage Plan                  Cover Sheet</b> City of Gaithersburg, Maryland		
AS SPECIFIED		REV.1	5.15.2020			
		REV.2	12.11.2020			
DRAWN	DESIGNED	CHECKED	REV.3	1140 Connecticut Ave. NW / Suite 600 / Washington DC / 20036 / 202.296.8625 15125 Washington Street / Suite 212 / Haymarket, VA / 20169 / 571.248.0992 3914 Centreville Road / Suite 330 / Chantilly, VA / 20151 / 703.787.9595		PROJECT NO. 2545-005 SHEET 1 OF 5
SDT	SDT	KLW		<b>GOROVE / SLADE</b> Transportation Planners and Engineers		[Signature] PROFESSIONAL ENGINEER



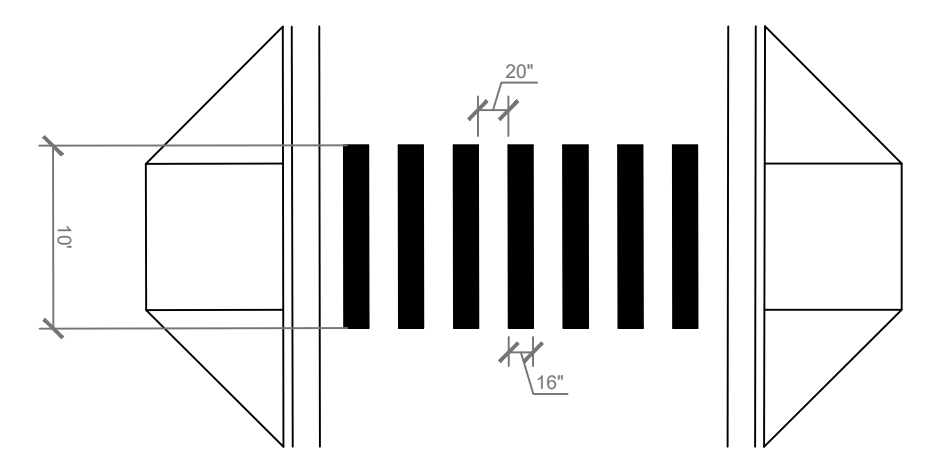
\*RESIDENTIAL PARKING GATE WILL BE ACTIVATED BY ELECTRONIC TRANSPONDERS DISTRIBUTED TO RESIDENTS

CITY OF GAITHERSBURG PLANNING COMMISSION  
 31 SOUTH SUMMIT PARKING, GAITHERSBURG, MARYLAND 20877  
**SITE PLAN APPROVAL**  
 AT THE REGULARLY SCHEDULED MEETING OF THE PLANNING COMMISSION HELD ON April 4, 2018  
 APPLICATION NO. SP-7805-2017 - WAS GRANTED  
**FINAL SITE PLAN APPROVAL**  
 WITH: 28880 (15) CONDITIONS SEE 2ND LETTER  
 DATE: 7/22/2021 BY: *James Collier*  
 NOTE: ANY REVISIONS TO SIGNED PLANS MUST BE APPROVED BY THE PLANNING COMMISSION OR PLANNING STAFF

CITY OF GAITHERSBURG  
 DEPARTMENT OF PUBLIC WORKS  
**FINAL APPROVAL**  
 APPLICATION NO. SP-7805-2017  
 DATE: July 22, 2021  
 BY: *William P. Regan*

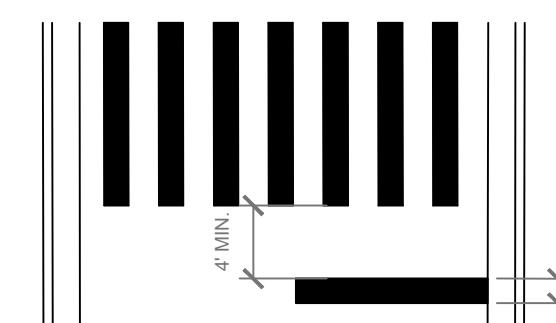


**Ladder Bar Type Crosswalk**



NOTE: SPACING OF LINES SELECTED TO AVOID WHEEL PATH

**Stop Bar**



- GENERAL NOTES:**
- 1) Crosswalks are to be centered on the handicap ramps unless otherwise noted
  - 2) Standard and diagonal crosswalks are 12" solid white lines
  - 3) Crosswalk and stopline should start/end at the gutter pan
  - 4) Ladder bar crosswalk lines are 16" solid white lines
  - 5) Stoplines are solid white lines  
 -16" for non-signalized intersections  
 -24" for signalized intersections

**PLAN LEGEND:**

DIRECTION OF TRAFFIC ARROWS (ILLUSTRATIVE)

PROPOSED CROSSWALK

PROPOSED SIGN

PROPOSED WAYFINDING SIGN

**PAVEMENT MARKING LEGEND:**

- ▲ 16", WHITE, SOLID FOR STOPLINE
- ▲ 16", WHITE, SOLID FOR CROSSWALK
- ▲ 4", WHITE, SOLID, 45° ANGLE FOR ADA PATHWAY/NO PARKING AREAS (NON-THERMOPLASTIC PAINT)
- ▲ 4", DOUBLE YELLOW, SOLID
- ▲ 6' X 3' STOP SYMBOL
- ▲ HANDICAP SYMBOL (SEE DETAIL)

NOTE: ALL PARKING STRIPING TO BE 4" WHITE, SOLID, CONCRETE PAINT (SEE SHEET #5)

**PROPOSED SIGNS:**

R1-1 30" X 30"	R8-3 12" X 18"	12" X 18"	12" X 9"	12" X 18"	R7-8 12" X 18"	R7-8P 12" X 9"	12" X 18"	12" X 18"

**PROPOSED WAYFINDING SIGNS:**

S 8	EXIT	18" X 12"
S 9	EXIT	18" X 12"
S 10	EXIT	18" X 12"
S 11	Residential Parking / Retail Parking	18" X 18"
S 12	Residential Parking Only	18" X 12"

-ALL WAYFINDING SIGNS TO BE CEILING OR WALL MOUNTED WITHIN PARKING GARAGE DEPENDING ON VERTICAL CLEARANCE AND LOCATION  
 -WAYFINDING SIGNAGE SHALL BE WHITE LETTERING ON A BLUE BACKGROUND

**DOUBLE STRIPING DETAIL** (NOT TO SCALE)

**ADA STRIPING DETAIL** (NOT TO SCALE)

**ADA VAN ACCESSIBLE STRIPING DETAIL** (NOT TO SCALE)

**ADA SIGN MOUNTING DETAIL** (NOT TO SCALE)

RESERVED PARKING  
 VAN ACCESSIBLE  
 FINE \$250

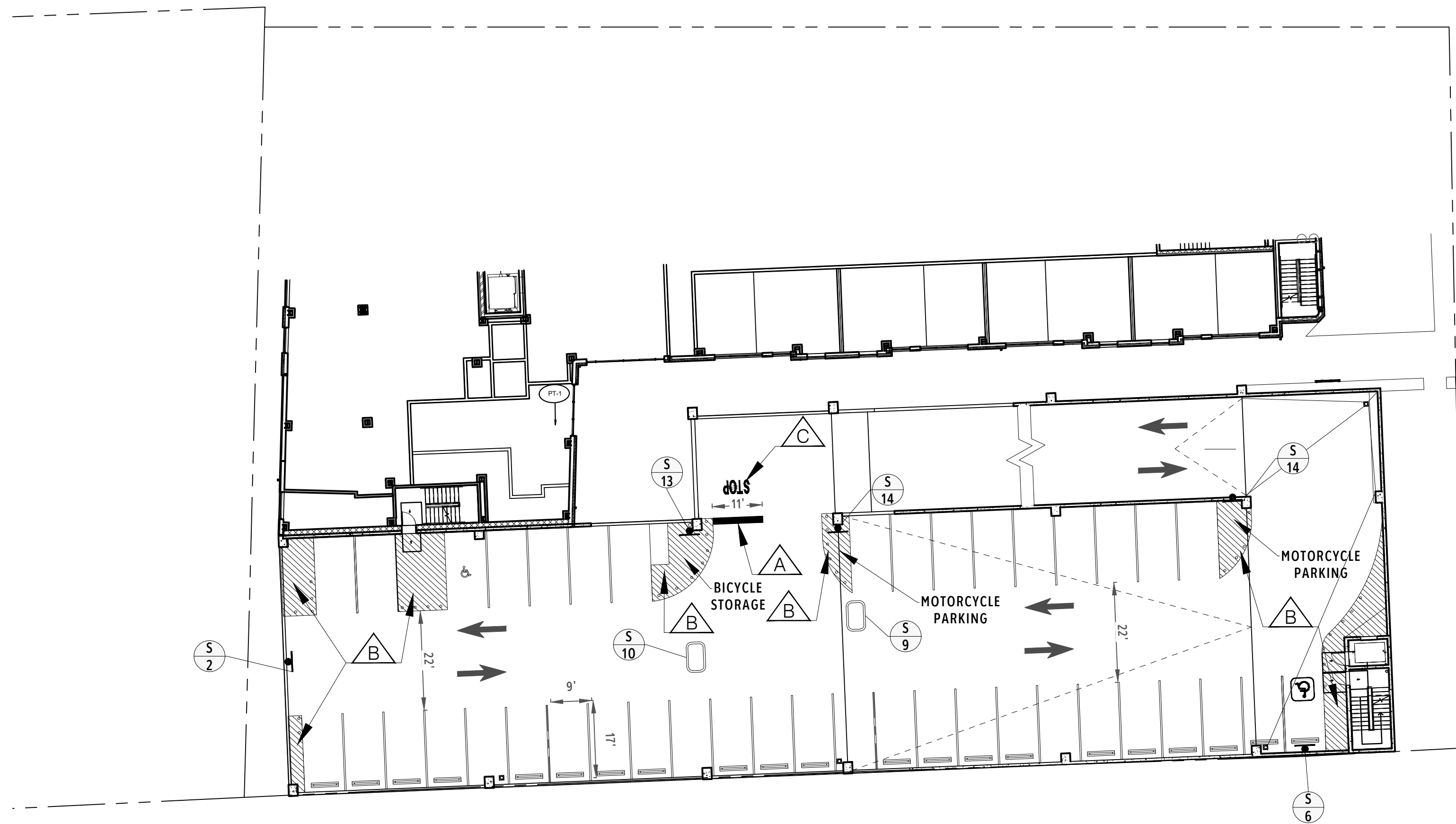
Figure 3B-22. International Symbol of Accessibility Parking Space Marking

\*Van accessible sign not used for standard ADA spaces

DRAWN: SDT DESIGNED: SDT CHECKED: KLV	DRAWING SCALE: 0" = 10' / 1" = 20'	DATE: 3.12.2018	<b>315 East Diamond Avenue</b> <b>Pavement Marking and Sign Plan</b> <b>Ground Level</b> City of Gaithersburg, Maryland	
	REV.1: 5.15.2020	REV.2: 12.11.2020		
	REV.3:			

1140 Connecticut Ave. NW / Suite 600 / Washington DC / 20036 / 202.296.8625  
 15125 Washington Street / Suite 212 / Haymarket, VA / 20169 / 571.248.0992  
 3914 Centreville Road / Suite 330 / Chantilly, VA / 20151 / 703.787.9595

PROJECT NO. 2545-005  
 SHEET 2 OF 5



**PLAN LEGEND:**

DIRECTION OF TRAFFIC ARROWS (ILLUSTRATIVE)

PROPOSED CROSSWALK

PROPOSED SIGN

PROPOSED WAYFINDING SIGN

**PAVEMENT MARKING LEGEND:**

16", WHITE, SOLID FOR STOPLINE  
 4", WHITE, SOLID, 45° ANGLE FOR ADA PATHWAY/NO PARKING AREAS (NON-THERMOPLASTIC PAINT)  
 6' X 3' STOP SYMBOL

NOTE: ALL PARKING STRIPING TO BE 4" WHITE, SOLID (NON-THERMOPLASTIC PAINT)

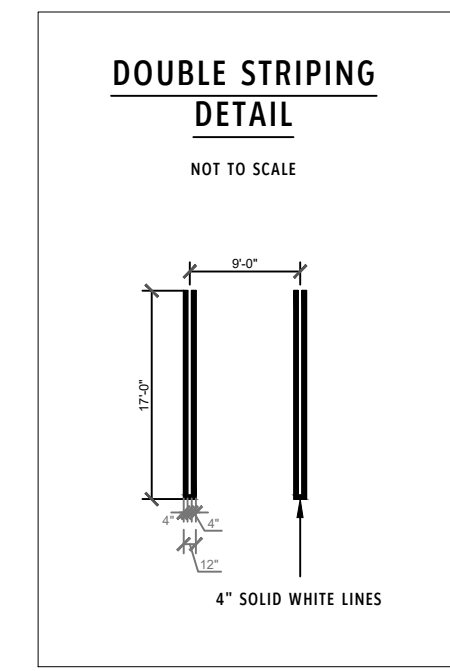
**PROPOSED SIGNS:**

R1-1 30" X 30"	R8-3 12" X 18"	12" X 18"	12" X 9" FINE \$250	12" X 18"	R7-8 12" X 18"	R7-8P 12" X 9" FINE \$250	12" X 18"	12" X 18"

**PROPOSED WAYFINDING SIGNS:**

	18" X 12"
	18" X 12"
	18" X 12"
	18" X 18"
	18" X 12"

- ALL WAYFINDING SIGNS TO BE CEILING OR WALL MOUNTED WITHIN PARKING GARAGE DEPENDING ON VERTICAL CLEARANCE AND LOCATION  
 - WAYFINDING SIGNAGE SHALL BE WHITE LETTERING ON A BLUE BACKGROUND



CITY OF GAITHERSBURG PLANNING COMMISSION  
 31 SOUTH SHARPE AVENUE, GAITHERSBURG, MARYLAND 20878

**SITE PLAN APPROVAL**

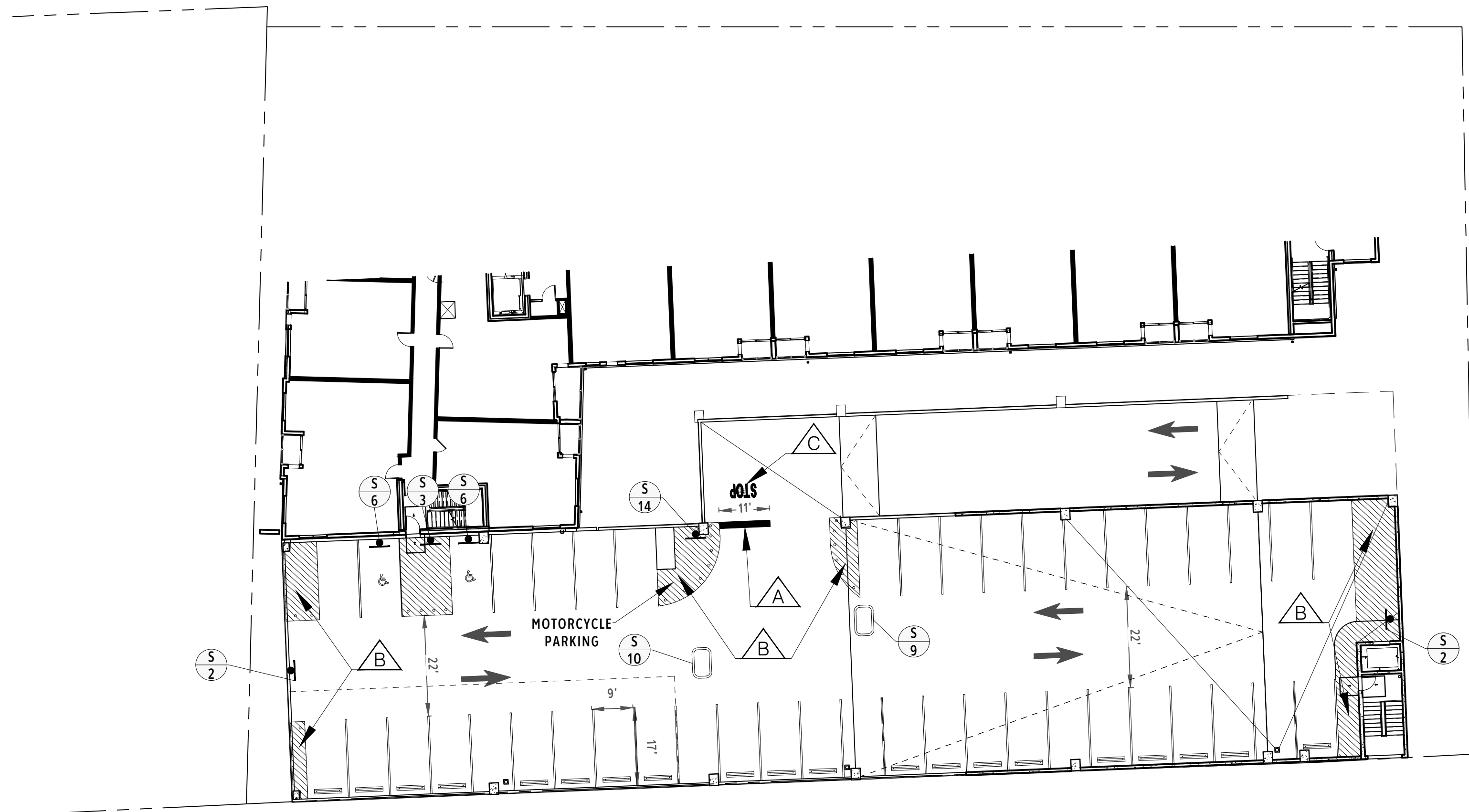
AT THE REGULARLY SCHEDULED MEETING OF THE PLANNING COMMISSION HELD ON April 4, 2018  
 APPLICATION NO. SP-7805-2017 WAS GRANTED  
**FINAL SITE PLAN APPROVAL**  
 WITH SP-7805-2017 CONDITIONS SET IN A LETTER  
 DATE 7/22/2021 BY [Signature]

NOTE: ANY REVISIONS TO SIGNED PLANS MUST BE APPROVED BY THE PLANNING COMMISSION OR PLANNING STAFF

CITY OF GAITHERSBURG  
 DEPARTMENT OF PUBLIC WORKS  
**FINAL APPROVAL**  
 APPLICATION NO. SP-7805-2017  
 DATE July 22, 2021  
 BY [Signature]

DRAWING SCALE 0" 10" 20" 40" 1" = 20'	DATE	3.12.2018	<b>315 East Diamond Avenue          Pavement Marking and Sign Plan          Second Level</b> City of Gaithersburg, Maryland	
	REV.1	5.15.2020		
	REV.2	12.11.2020		
DRAWN SDT DESIGNED SDT CHECKED KLV	DATE REV.3	1140 Connecticut Ave. NW / Suite 600 / Washington DC / 20036 / 202.296.8625 15125 Washington Street / Suite 212 / Haymarket, VA / 20169 / 571.248.0992 3914 Centreville Road / Suite 330 / Chantilly, VA / 20151 / 703.787.9595	PROJECT NO. 2545-005 SHEET <b>3</b> OF <b>5</b>	

**GOROVE / SLADE**  
 Transportation Planners and Engineers



**PLAN LEGEND:**

DIRECTION OF TRAFFIC ARROWS (ILLUSTRATIVE)

PROPOSED CROSSWALK

PROPOSED SIGN

PROPOSED WAYFINDING SIGN

**PAVEMENT MARKING LEGEND:**

16", WHITE, SOLID FOR STOPLINE

4", WHITE, SOLID, 45° ANGLE FOR ADA PATHWAY/NO PARKING AREAS (NON-THERMOPLASTIC PAINT)

NOTE: ALL PARKING STRIPING TO BE 4" WHITE, SOLID (NON-THERMOPLASTIC PLASTIC PAINT)

**PROPOSED SIGNS:**

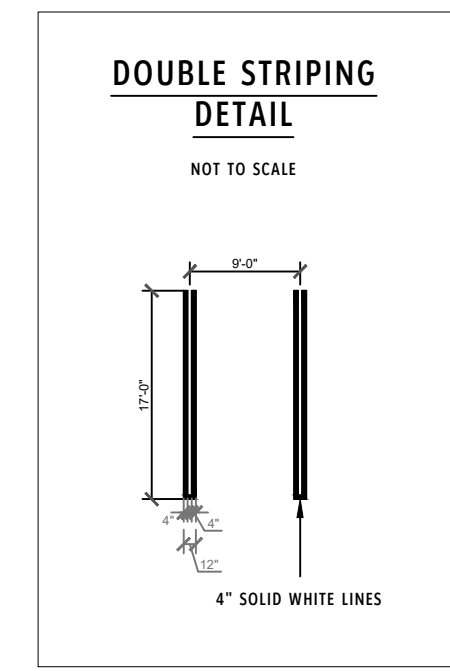
R1-1 30" X 30"	R8-3 12" X 18"	12" X 18"	12" X 9" FINE \$250	12" X 18"	R7-8 12" X 18"	R7-8P 12" X 9" FINE \$250	12" X 18"	12" X 18"

**PROPOSED WAYFINDING SIGNS:**

	EXIT	18" X 12"
	EXIT	18" X 12"
	EXIT	18" X 12"
	Residential Parking Retail Parking	18" X 18"
	Residential Parking Only	18" X 12"

-ALL WAYFINDING SIGNS TO BE CEILING OR WALL MOUNTED WITHIN PARKING GARAGE DEPENDING ON VERTICAL CLEARANCE AND LOCATION

-WAYFINDING SIGNAGE SHALL BE WHITE LETTERING ON A BLUE BACKGROUND



**GOROVE / SLADE**  
Transportation Planners and Engineers

DATE: 3.12.2018

REV.1: 5.15.2020

REV.2: 12.11.2020

REV.3: [blank]

DRAWN: SDT, DESIGNED: SDT, CHECKED: KLV

**315 East Diamond Avenue**  
Pavement Marking and Sign Plan  
Roof Level  
City of Gaithersburg, Maryland

1140 Connecticut Ave. NW / Suite 600 / Washington DC / 20036 / 202.296.8625

15125 Washington Street / Suite 212 / Haymarket, VA / 20169 / 571.248.0992

3914 Centreville Road / Suite 330 / Chantilly, VA / 20151 / 703.787.9595

PROJECT NO. 2545-005

SHEET 4 OF 5

CITY OF GAITHERSBURG PLANNING COMMISSION  
21 SOUTH SUMMIT AVENUE, GAITHERSBURG, MARYLAND 20877

**SITE PLAN APPROVAL**

AT THE REGULARLY SCHEDULED MEETING OF THE PLANNING COMMISSION HELD ON April 4, 2018

APPLICATION NO. SP-7805-2017 WAS GRANTED

**FINAL SITE PLAN APPROVAL**

DATE: 7/22/2021 BY: [Signature]

NOTE: ANY REVISIONS TO SIGNED PLANS MUST BE APPROVED BY THE PLANNING COMMISSION OR PLANNING STAFF

CITY OF GAITHERSBURG  
DEPARTMENT OF PUBLIC WORKS  
**FINAL APPROVAL**

APPLICATION NO. SP-7805-2017

DATE July 22, 2021

BY: [Signature]

