

1 GROUND FLOOR PLAN  
SCALE: 1/8"=1'-0"

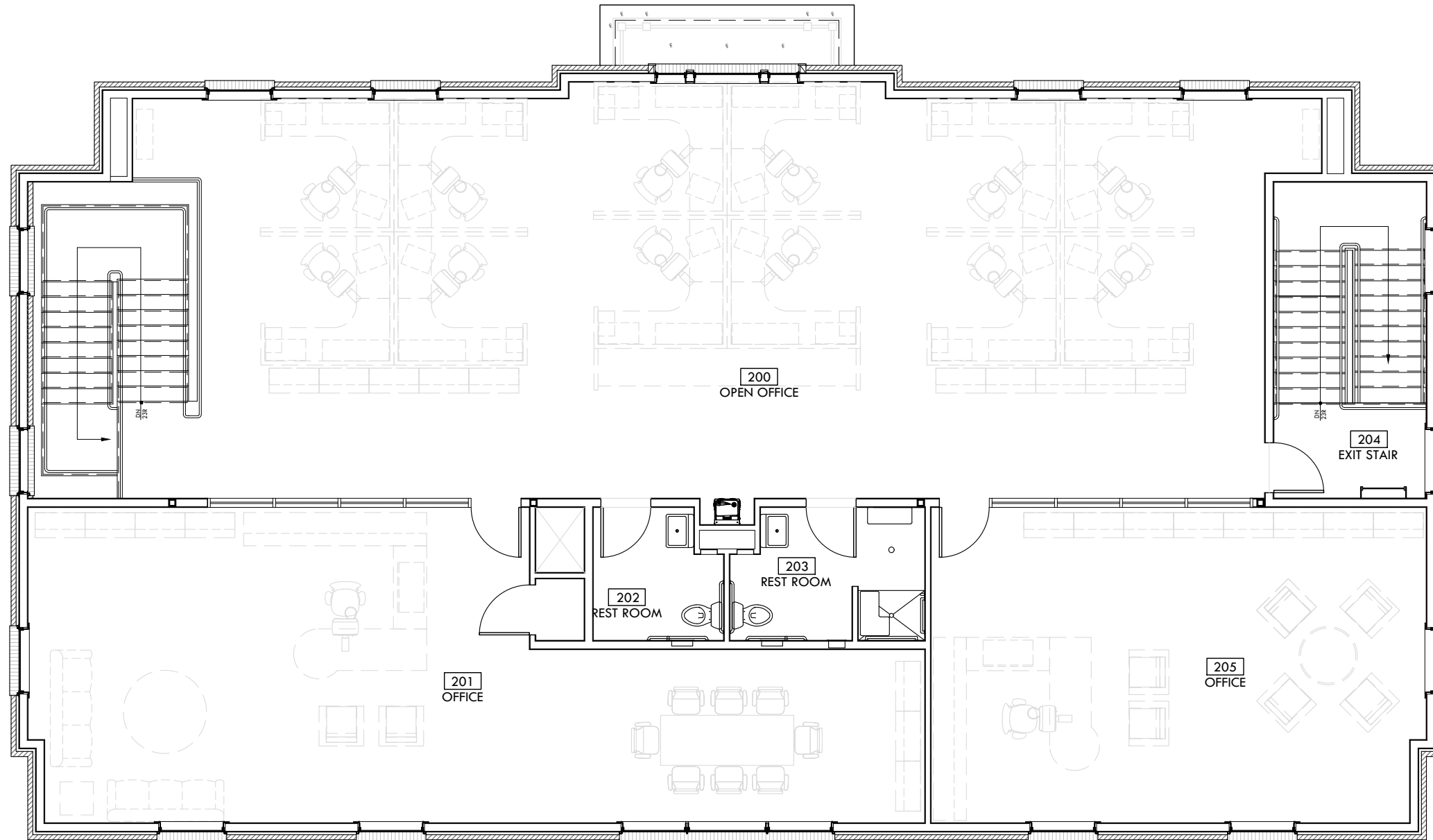
CITY OF GAITHERSBURG PLANNING COMMISSION  
31 SOUTH SUMMIT AVENUE, GAITHERSBURG, MARYLAND 20877  
**SITE PLAN APPROVAL**  
AT THE REGULARLY SCHEDULED MEETING OF THE PLANNING COMMISSION HELD ON May 6, 2020  
APPLICATION NO. SP-8320-2019 WAS GRANTED  
**FINAL SITE PLAN APPROVAL**  
WITH FIVE (5) CONDITIONS SEE LETTER  
DATE 7/13/2020 BY [Signature]  
**NOTE:** ANY REVISIONS TO SIGNED PLANS MUST BE APPROVED BY THE PLANNING COMMISSION OR PLANNING STAFF



PROJECT NO.	18046-00
DATE	06-24-20
DRAWN BY	BMB
<b>A1.0</b>	
© 2020 - BATES ARCHITECTS, PC	

**LAW OFFICES OF LUIS LEON**  
102 SOUTH FREDERICK AVE.,  
GAITHERSBURG, MD

**BATES ARCHITECTS**  
121 NORTH COURT STREET  
FREDERICK, MARYLAND 21701  
TEL 301.644.0444 | FAX 301.644.0446  
WEB WWW.BATESARCHITECTSPC.COM



1 SECOND FLOOR PLAN  
SCALE: 1/8"=1'-0"

CITY OF GAITHERSBURG PLANNING COMMISSION  
37 SOUTH SUMMIT AVENUE, GAITHERSBURG, MARYLAND 20877  
**SITE PLAN APPROVAL**  
AT THE REGULARLY SCHEDULED MEETING OF THE PLANNING COMMISSION HELD ON May 6, 2020  
APPLICATION NO. SP-8320-2019 WAS GRANTED  
**FINAL SITE PLAN APPROVAL**  
WITH FIVE (5) CONDITIONS, SEE S.D.A. LETTER.  
DATE 7/13/2020 BY [Signature]  
NOTE: ANY REVISIONS TO SIGNED PLANS MUST BE APPROVED BY THE PLANNING COMMISSION OR PLANNING STAFF



PROJECT NO.	18046-00
DATE	06-24-20
DRAWN BY	BMB
<b>A1.1</b>	
© 2020 - BATES ARCHITECTS, PC	

**LAW OFFICES OF LUIS LEON**  
102 SOUTH FREDERICK AVE.,  
GAITHERSBURG, MD

**BATES ARCHITECTS**  
121 NORTH COURT STREET  
FREDERICK, MARYLAND 21701  
TEL 301.644.0444 | FAX 301.644.0446  
WEB WWW.BATESARCHITECTSPC.COM



**1 FRONT ELEVATION**  
SCALE: 1/8"=1'-0"

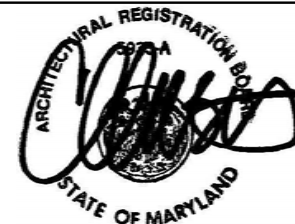
- 1 BRICK VENEER, COLOR TO BE SHADE OF RED TO WORK WITH ADJACENT BUILDINGS
- 2 PTD. AZEK CORNICE, TYP.
- 3 PRECAST HEADER WITH PRECAST KEYSTONE
- 4 RED BRICK ROWLOCK SILL WITH BRICK SOLDIER COURSE TRIM BAND
- 5 PT. PTD. DARK GRAY WOOD SHUTTERS WITH BLACK METAL TIE BACKS, STYLE T.B.D.

- 6 DOUBLE HUNG METAL CLAD WOOD WINDOWS (6 OVER 6)
- 7 RED BRICK ROWLOCK SILL
- 8 1/2 LITE STAIN GRADE WOOD AND GLASS FRONT DOOR
- 9 BRICK FRONT STOOP
- 10 PTD. WHITE 12X12 HARDIE COMPOSITE SQUARE COLUMN WRAP WITH SQUARE BASE AND CAP (OR BUILT-UP COLUMN WRAP TO MATCH)

- 11 PTD. WHITE AZEK RAILING
- 12 PTD. WHITE AZEK PORCH EAVE AND CORNICE
- 13 PTD. GRAY METAL SCREEN WALL
- 14 PTD. WHITE AZEK TRIM
- 15 NOT USED

- 16 NOT USED
- 17 NOT USED
- 18 NOT USED
- 19 NOT USED
- 20 CONC. STORMWATER PLANTER
- 21 NOT USED

CITY OF GAITHERSBURG PLANNING COMMISSION  
31 SOUTH SUMMIT AVENUE, GAITHERSBURG, MARYLAND 20877  
**SITE PLAN APPROVAL**  
AT THE REGULARLY SCHEDULED MEETING OF THE PLANNING COMMISSION HELD ON May 6, 2020  
APPLICATION NO. SP-8320-2019 WAS GRANTED  
**FINAL SITE PLAN APPROVAL**  
WITH FIVE ( 5 ) CONDITIONS SET IN A LETTER.  
DATE 7/13/2020 BY [Signature]  
NOTE: ANY REVISIONS TO SIGNED PLANS MUST BE APPROVED BY THE PLANNING COMMISSION OR PLANNING STAFF



PROJECT NO. 18046-00  
DATE 06-24-20  
DRAWN BY BMB  
**A2.0**  
© 2020 - BATES ARCHITECTS, PC

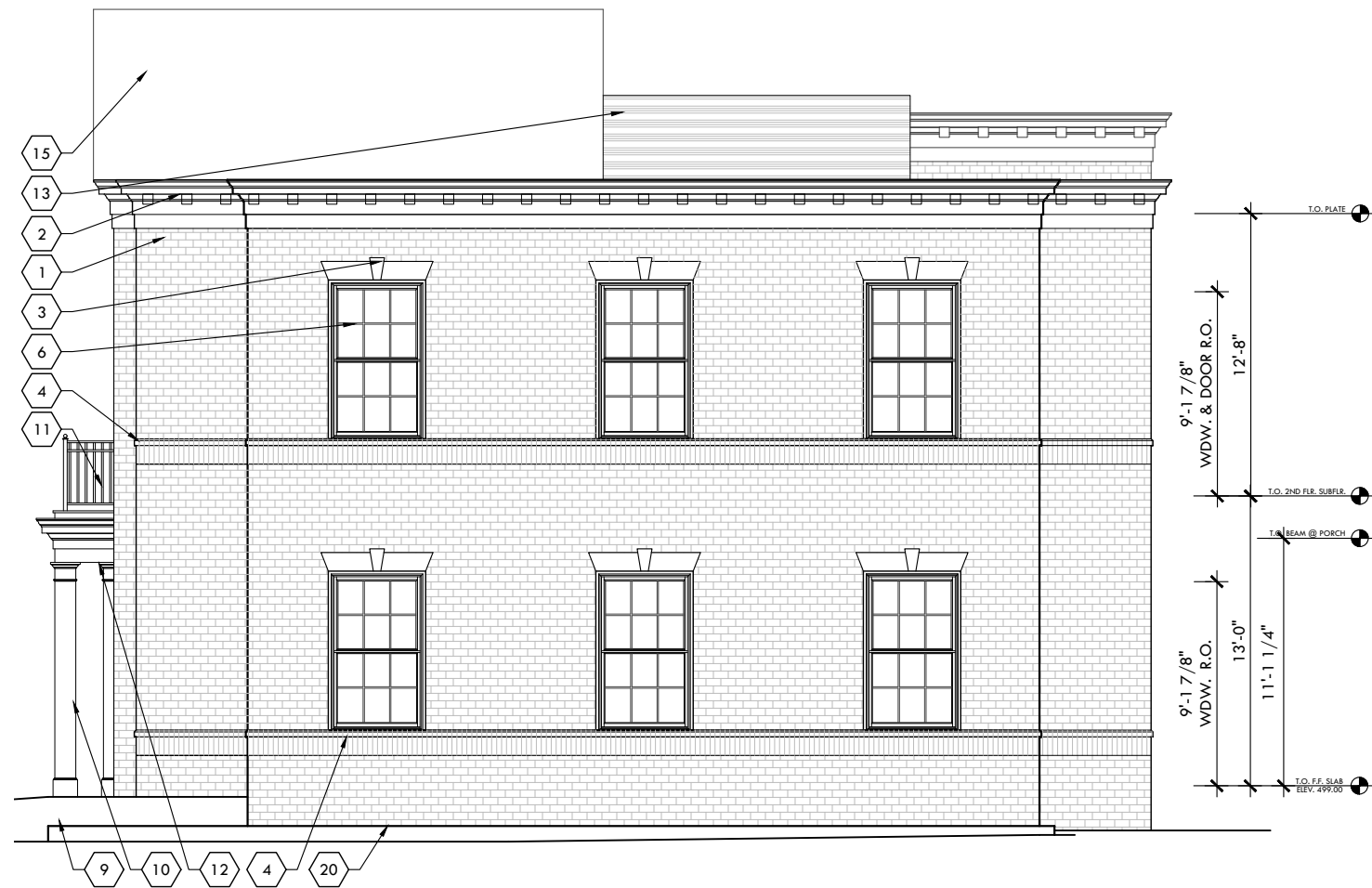
LAW OFFICES OF LUIS LEON

102 SOUTH FREDERICK AVE.,  
GAITHERSBURG, MD

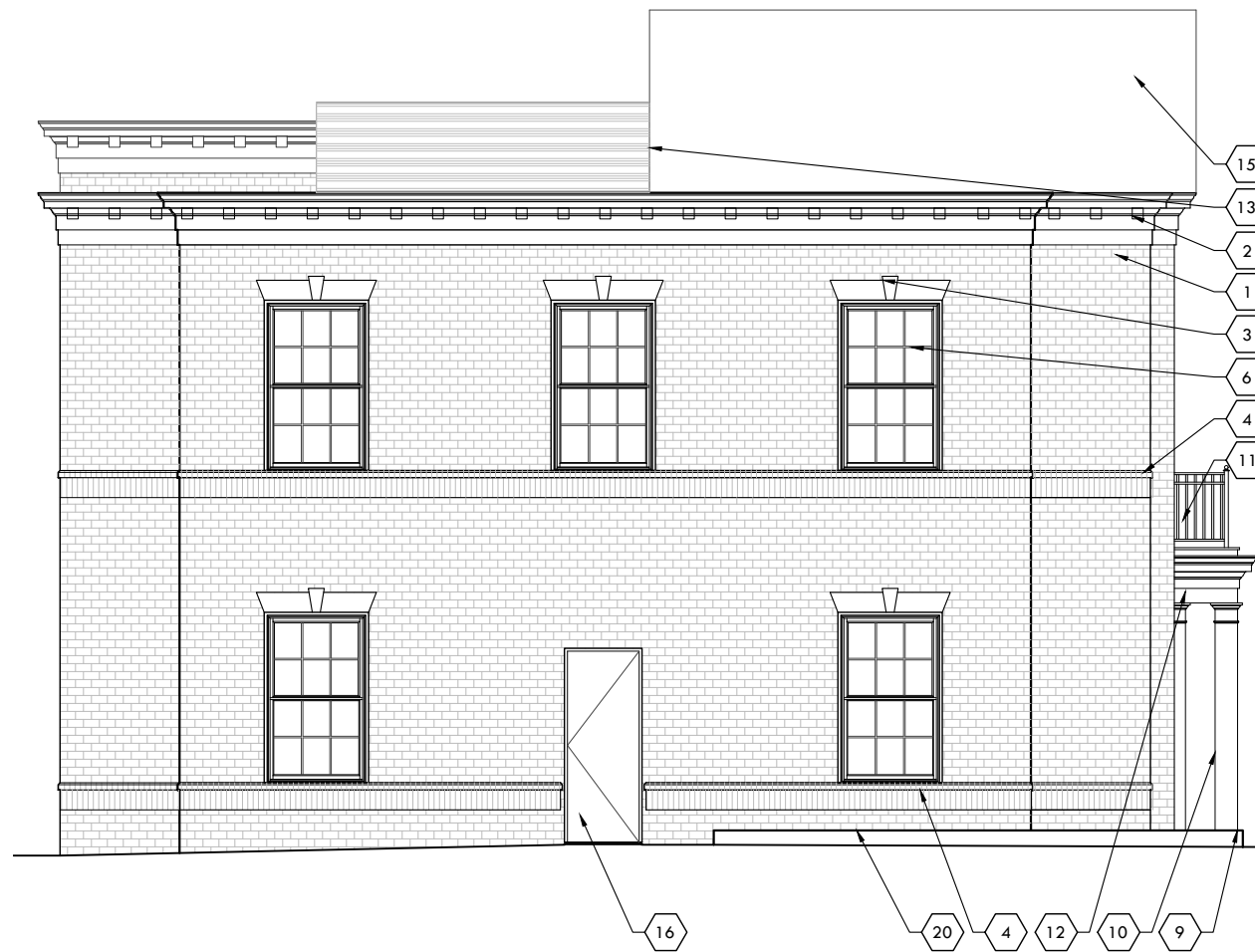
**BATES ARCHITECTS**  
121 NORTH COURT STREET  
FREDERICK, MARYLAND 21701  
TEL 301.644.0444 | FAX 301.644.0446  
WEB WWW.BATESARCHITECTSPC.COM

CITY OF GAITHERSBURG PLANNING COMMISSION  
 31 SOUTH SUMMIT AVENUE, GAITHERSBURG, MARYLAND 20877  
**SITE PLAN APPROVAL**  
 AT THE REGULARLY SCHEDULED MEETING OF THE PLANNING  
 COMMISSION HELD ON May 6, 2020  
 APPLICATION NO. SP-8320-2019 WAS GRANTED  
**FINAL SITE PLAN APPROVAL**  
 WITH FIVE ( 5 ) CONDITIONS, SEE D.A. LETTER  
 DATE 7/13/2020 BY [Signature]  
 NOTE: ANY REVISIONS TO SIGNED PLANS MUST BE APPROVED  
 BY THE PLANNING COMMISSION OR PLANNING STAFF

PROJECT NO. 18046-00  
 DATE 06-24-20  
 DRAWN BY BMB  
**A2.1**  
 © 2020 - BATES ARCHITECTS, PC



**1 RIGHT SIDE ELEVATION**  
 SCALE: 1/8"=1'-0"



**2 LEFT SIDE ELEVATION**  
 SCALE: 1/8"=1'-0"

- 1 BRICK VENEER, COLOR TO BE SHADE OF RED TO WORK WITH ADJACENT BUILDINGS
- 2 PTD. AZEK CORNICE, TYP.
- 3 PRECAST HEADER WITH PRECAST KEYSTONE
- 4 RED BRICK ROWLOCK SILL WITH BRICK SOLDIER COURSE TRIM BAND
- 5 NOT USED

- 6 DOUBLE HUNG METAL CLAD WOOD WINDOWS (6 OVER 6)
- 7 NOT USED
- 8 NOT USED
- 9 BRICK FRONT STOOP
- 10 PTD. WHITE 1 2X1 2 HARDIE COMPOSITE SQUARE COLUMN WRAP WITH SQUARE BASE AND CAP (OR BUILT-UP COLUMN WRAP TO MATCH)

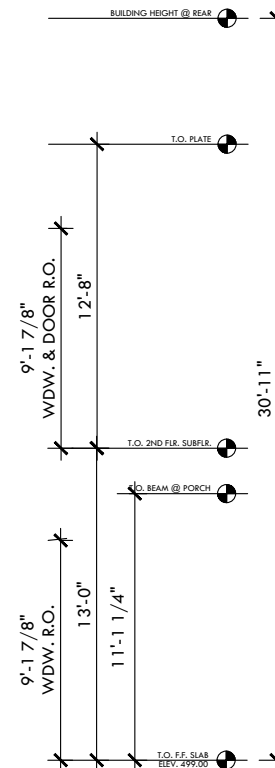
- 11 PTD. WHITE AZEK RAILING
- 12 PTD. WHITE AZEK PORCH EAVE AND CORNICE
- 13 PTD. GRAY METAL SCREEN WALL
- 14 NOT USED
- 15 ASPHALT SHINGLE ROOF, EXACT COLOR AND STYLE T.B.D.

- 16 PTD. MTL. EGRESS DOOR PER IBC/NFPA REQUIREMENTS
- 17 NOT USED
- 18 NOT USED
- 19 NOT USED
- 20 CONC. STORMWATER PLANTER
- 21 NOT USED



**LAW OFFICES OF LUIS LEON**  
 102 SOUTH FREDERICK AVE.,  
 GAITHERSBURG, MD

**BATES ARCHITECTS**  
 121 NORTH COURT STREET  
 FREDERICK, MARYLAND 21701  
 TEL 301.644.0444 | FAX 301.644.0446  
 WEB WWW.BATESARCHITECTSPC.COM



- 1 BRICK VENEER, COLOR TO BE SHADE OF RED TO WORK WITH ADJACENT BUILDINGS
- 2 PTD. AZEK CORNICE, TYP.
- 3 PRECAST HEADER WITH PRECAST KEYSTONE
- 4 RED BRICK ROWLOCK SILL WITH BRICK SOLDIER COURSE TRIM BAND
- 5 PT. PTD. DARK GRAY WOOD SHUTTERS WITH BLACK METAL TIE BACKS, STYLE T.B.D.

- 6 DOUBLE HUNG METAL CLAD WOOD WINDOWS (6 OVER 6)
- 7 NOT USED
- 8 NOT USED
- 9 NOT USED
- 10 NOT USED

- 11 NOT USED
- 12 NOT USED
- 13 PTD. GRAY METAL SCREEN WALL
- 14 NOT USED
- 15 NOT USED

**1 REAR ELEVATION**  
SCALE: 1/8"=1'-0"

- 16 NOT USED
- 17 ADA COMPLIANT SLOPE TO ENTRY DOOR
- 18 FULL LITE SLIDING GLASS ENTRY DOOR
- 19 BRICK PIER TO MATCH BRICK VENEER
- 20 CONC. STORMWATER PLANTER
- 21 BRICK SOLDIER COURSE HEADER

CITY OF GAITHERSBURG PLANNING COMMISSION  
31 SOUTH SUMMIT AVENUE, GAITHERSBURG, MARYLAND 20877  
**SITE PLAN APPROVAL**  
AT THE REGULARLY SCHEDULED MEETING OF THE PLANNING COMMISSION HELD ON May 6, 2020  
APPLICATION NO. SP-8320-2019 WAS GRANTED  
**FINAL SITE PLAN APPROVAL**  
WITH FIVE (5) CONDITIONS. SEE S LETTER.  
DATE 7/13/2020 BY Thomas J. Lewis  
**NOTE:** ANY REVISIONS TO SIGNED PLANS MUST BE APPROVED BY THE PLANNING COMMISSION OR PLANNING STAFF



PROJECT NO. 18046-00  
DATE 06-24-20  
DRAWN BY BMB  
A2.2  
© 2020 - BATES ARCHITECTS, PC

LAW OFFICES OF LUIS LEON

102 SOUTH FREDERICK AVE.,  
GAITHERSBURG, MD

**BATES ARCHITECTS**  
121 NORTH COURT STREET  
FREDERICK, MARYLAND 21701  
TEL 301.644.0444 | FAX 301.644.0446  
WEB WWW.BATESARCHITECTSPC.COM



PROJECT NO. 18046-00  
 DATE 05-11-20  
 DRAWN BY BMB  
**A2.0**  
 © 2020 - BATES ARCHITECTS, PC

LAW OFFICES OF LUIS LEON

102 SOUTH FREDERICK AVE.,  
 GAITHERSBURG, MD

**BATES ARCHITECTS**  
 121 NORTH COURT STREET  
 FREDERICK, MARYLAND 21701  
 TEL: 301.644.0444 | FAX: 301.644.0446  
 WEB: WWW.BATESARCHITECTSPC.COM

CITY OF GAITHERSBURG PLANNING COMMISSION  
 31 SOUTH SUMMIT AVENUE, GAITHERSBURG, MARYLAND 20877  
**SITE PLAN APPROVAL**  
 AT THE REGULARLY SCHEDULED MEETING OF THE PLANNING  
 COMMISSION HELD ON May 6, 2020  
 APPLICATION NO. SP-8320-2019 WAS GRANTED  
**FINAL SITE PLAN APPROVAL**  
 WITH FIVE ( 5 ) CONDITIONS SEE S.P.A. LETTER.  
 DATE 7/13/2020 BY *Ramona L. Lewis*  
**NOTE:** ANY REVISIONS TO SIGNED PLANS MUST BE APPROVED  
 BY THE PLANNING COMMISSION OR PLANNING STAFF





CITY OF GAITHERSBURG PLANNING COMMISSION  
 31 SOUTH SUMMIT AVENUE, GAITHERSBURG, MARYLAND 20877  
**SITE PLAN APPROVAL**  
 AT THE REGULARLY SCHEDULED MEETING OF THE PLANNING  
 COMMISSION HELD ON May 6, 2020  
 APPLICATION NO. SP-8320-2019 WAS GRANTED  
**FINAL SITE PLAN APPROVAL**  
 WITH FIVE ( 5 ) CONDITIONS SEE S/D A LETTER.  
 DATE 7/13/2020 BY *Janine Lohse*  
 NOTE: ANY REVISIONS TO SIGNED PLANS MUST BE APPROVED  
 BY THE PLANNING COMMISSION OR PLANNING STAFF



PROJECT NO. 18046-00  
 DATE 05-11-20  
 DRAWN BY BMB  
**A2.1**  
 © 2020 - BATES ARCHITECTS, PC

**LAW OFFICES OF LUIS LEON**  
 102 SOUTH FREDERICK AVE.,  
 GAITHERSBURG, MD

**BATES ARCHITECTS**  
 121 NORTH COURT STREET  
 FREDERICK, MARYLAND 21701  
 TEL 301.644.0444 | FAX 301.644.0446  
 WEB WWW.BATESARCHITECTSPC.COM



PROJECT NO. 18046-00  
 DATE 05-11-20  
 DRAWN BY BMB  
**A2.2**  
 © 2020 - BATES ARCHITECTS, PC

**LAW OFFICES OF LUIS LEON**  
 102 SOUTH FREDERICK AVE.,  
 GAITHERSBURG, MD

**BATES ARCHITECTS**  
 121 NORTH COURT STREET  
 FREDERICK, MARYLAND 21701  
 TEL 301.644.0444 | FAX 301.644.0446  
 WEB WWW.BATESARCHITECTSPC.COM

CITY OF GAITHERSBURG PLANNING COMMISSION  
 31 SOUTH SUMMIT AVENUE, GAITHERSBURG, MARYLAND 20877  
**SITE PLAN APPROVAL**  
 AT THE REGULARLY SCHEDULED MEETING OF THE PLANNING COMMISSION HELD ON May 6, 2020  
 APPLICATION NO. SP-8320-2019 WAS GRANTED  
**FINAL SITE PLAN APPROVAL**  
 WITH FIVE ( 5 ) CONDITIONS SEE S D A LETTER.  
 DATE 7/13/2020 BY Jessie Soltes  
 NOTE: ANY REVISIONS TO SIGNED PLANS MUST BE APPROVED BY THE PLANNING COMMISSION OR PLANNING STAFF

